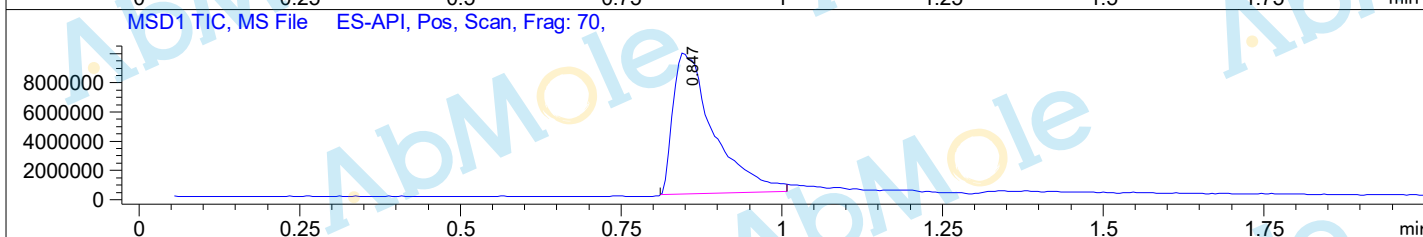
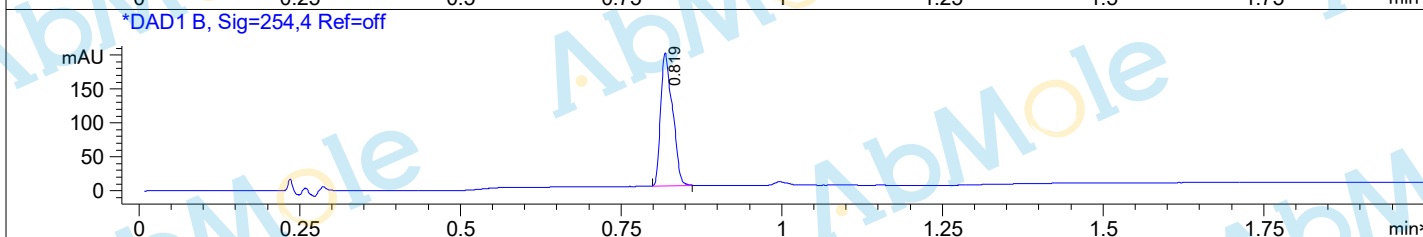
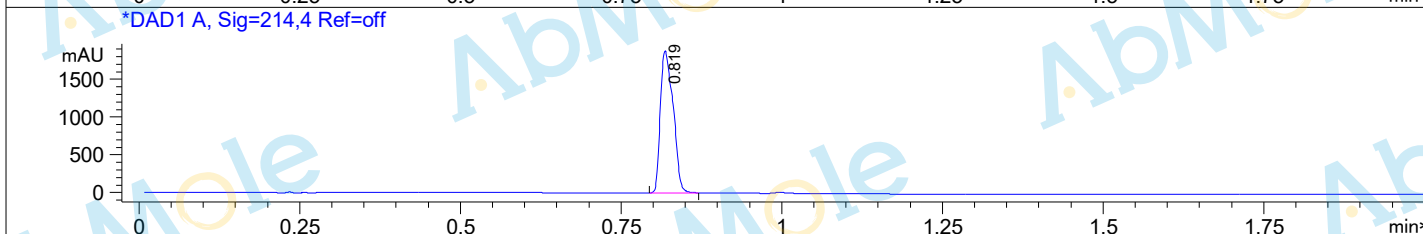
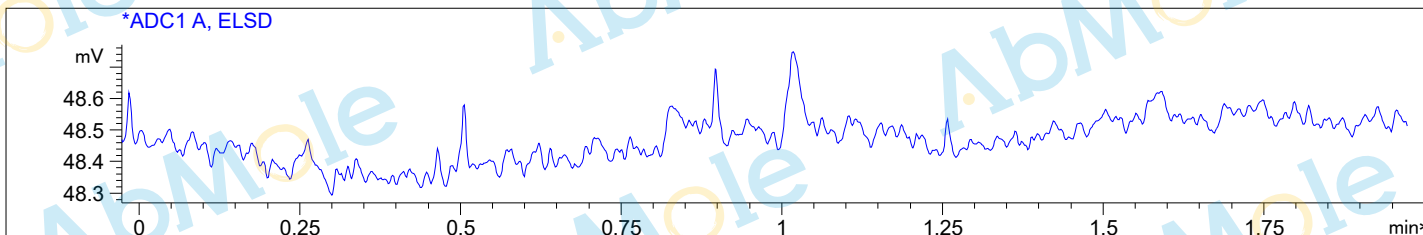


File D:\DATA  
 Injection Date : 9 Sep 19 10:10  
 Sample Name : pirfenidone-01  
 Acq. Operator : XXXX  
 Spec. Reported : MS Integration Inj Volume : 2 ul  
 Acq. Method : C:\Chem31\METHODS\1-POS-2MIN.M  
 Analysis Method : C:\Chem31\METHODS\1-POS-2MIN.M  
 Sample Info : Easy-Access Method: '1-POS-2MIN'  
 Method Info : Mobile Phase: A: Water (0.01%TFA) B: ACN (0.01%TFA)  
 Gradient: 5%B increase to 100%B within 0.8min, 100%B for 1.1min.  
 Flow Rate: 1.5mL/min  
 Column: Chromolith Fast Gradien RP-18e, 50-3mm.  
 Column Temperature: 40C  
 Mass Range: 100-1100



Integration Results for ADC1 A, ELSD

RetTim	Width	Area	Height	Area%
--------	-------	------	--------	-------

Integration Results for DAD1 A, Sig=214,4 Ref=off

RetTim	Width	Area	Height	Area%
0.82	0.02	2617.91	1883.88	100.00

Integration Results for DAD1 B, Sig=254,4 Ref=off

RetTim	Width	Area	Height	Area%
0.82	0.02	253.22	195.91	100.00

Ret. Time: 0.85

<<<< POSITIVE SPECTRA >>>>

