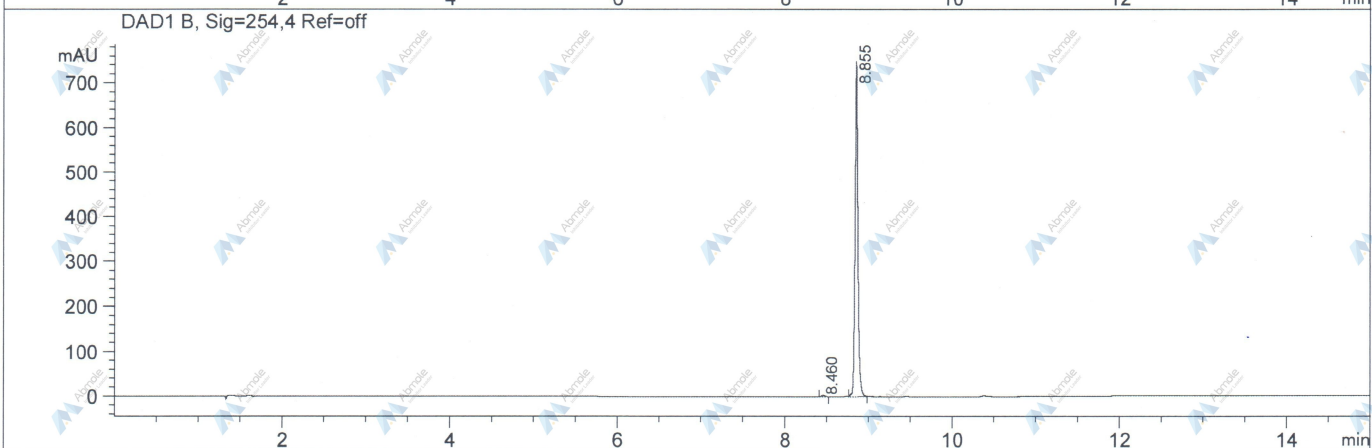
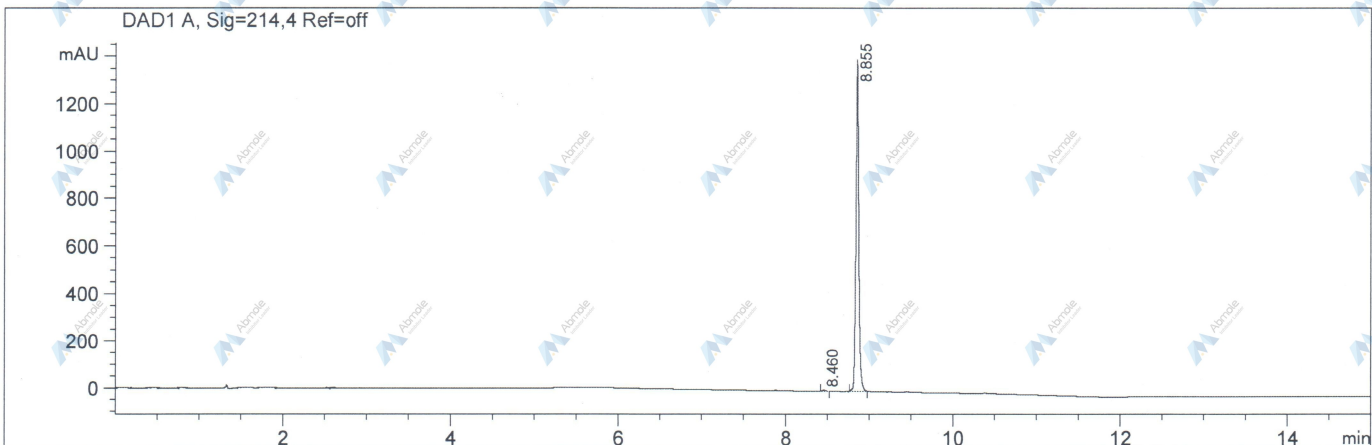


LC/MS Report

File D:\DATA
 Injection Date : 25-Mar-15, 19:45
 Sample Name : I-BET-762-01
 Acq. Operator : HPLC
 Spec. Reported : MS Integration
 Acq. Method : C:\Chem32\1\METHODS\2-HPLC-15MIN.M
 Analysis Method : C:\Chem32\1\METHODS\2-HPLC-15MIN.M
 Sample Info :
 Method Info : Mobile Phase: A: water(0.01%TFA) B: ACN(0.01%TFA)
 Gradient: 0min 5%B,3min 5%B,10min 95%B,15min 95%B
 Flow Rate: 1.2 ml/min
 Column: Eclipse XDB-C18,4.6*150mm,5um
 Oven Temperature: 40 C



Integration Results for DAD1 A, Sig=214,4 Ref=off

| RetTim | Width | Area | Height | Area% |
|--------|-------|---------|---------|-------|
| 8.46 | 0.04 | 11.72 | 4.83 | 0.34 |
| 8.86 | 0.04 | 3454.78 | 1400.38 | 99.66 |

Integration Results for DAD1 B, Sig=254,4 Ref=off

| RetTim | Width | Area | Height | Area% |
|--------|-------|---------|--------|-------|
| 8.46 | 0.04 | 10.03 | 3.96 | 0.54 |
| 8.86 | 0.04 | 1846.59 | 749.16 | 99.46 |