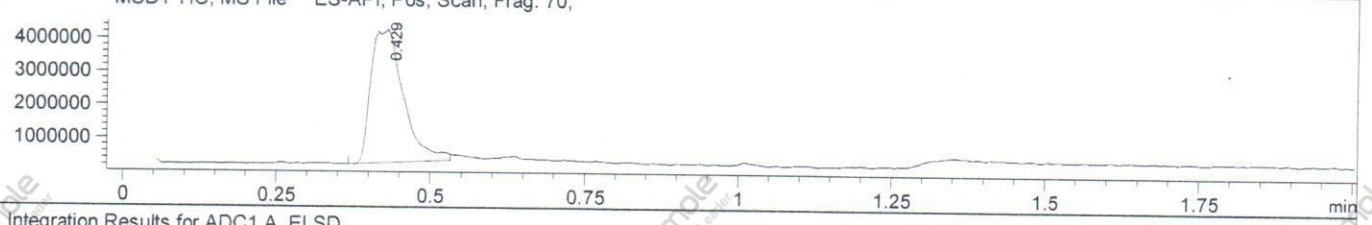
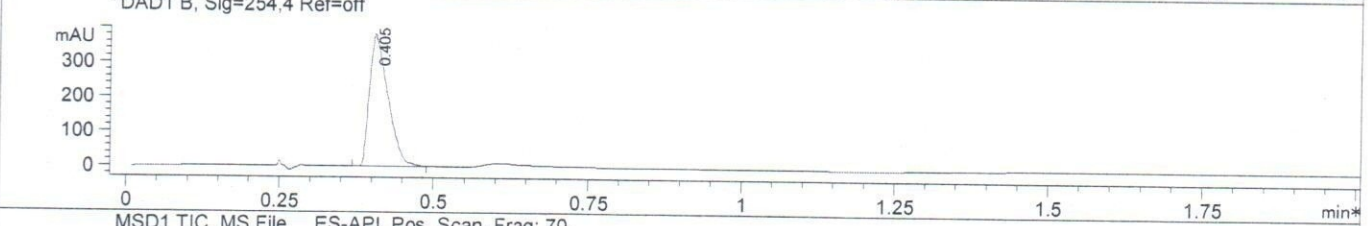
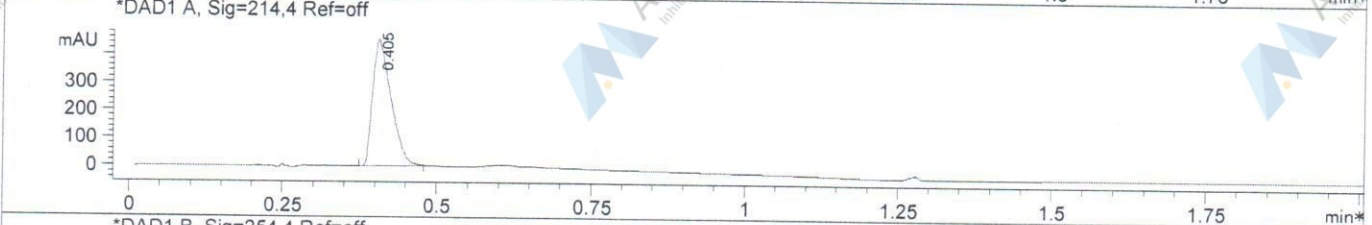
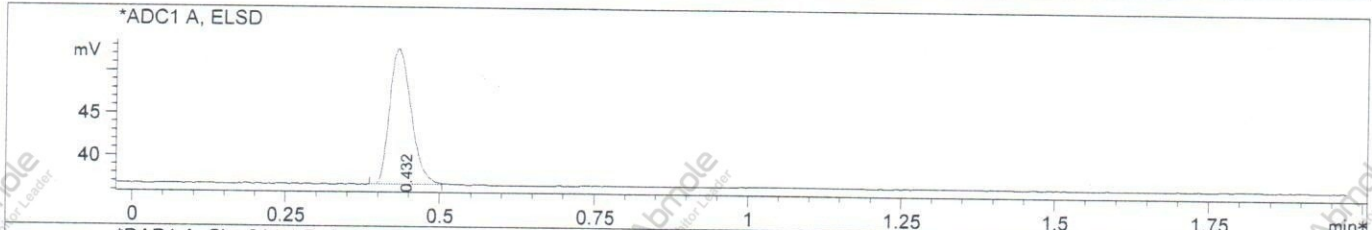


LC/MS Report

File D:\DATA
 Injection Date : 24 Sep 14 1:45
 Sample Name : Dacarbazine-02
 Acq. Operator : XXXX
 Spec. Reported : MS Integration
 Acq. Method : C:\Chem32\1\METHODS\1-POS-2MIN.M
 Analysis Method : C:\Chem32\1\METHODS\1-POS-2MIN.M
 Sample Info : Easy-Access Method: '1-POS-2MIN'
 Method Info : Mobile Phase: A: Water(0.01%TFA) B: ACN(0.01%TFA)
 Gradient: 5%B increase to 100%B within 0.8min,100%B for 1.1min.
 Flow Rate:1.5mL/min
 Column: Chromolith Fast Gradien RP-18e,50-3mm.
 Column Temperature: 40C
 Mass Range:100-1100



Integration Results for ADC1 A, ELSD

RetTim	Width	Area	Height	Area%
0.43	0.04	39.29	16.00	100.00

Integration Results for DAD1 A, Sig=214,4 Ref=off

RetTim	Width	Area	Height	Area%
0.40	0.03	954.36	455.09	100.00

Integration Results for DAD1 B, Sig=254,4 Ref=off

RetTim	Width	Area	Height	Area%
0.40	0.03	806.07	381.47	100.00

Ret. Time: 0.43

<<<< POSITIVE SPECTRA >>>>

