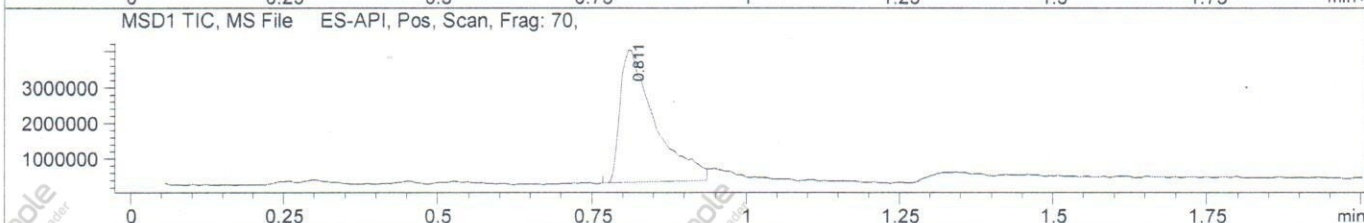
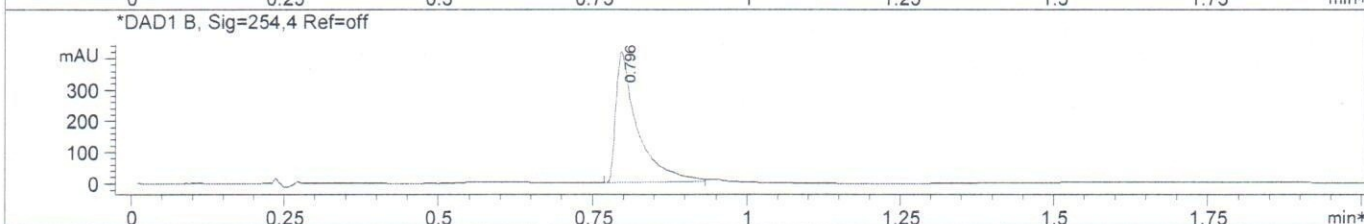
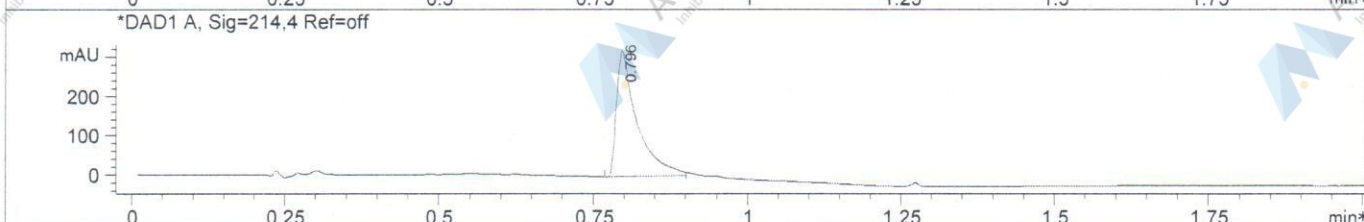
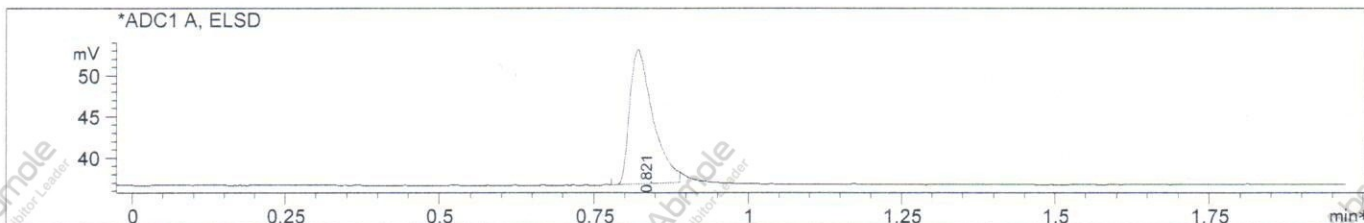


File D:\DATA  
 Injection Date : 24 Sep 14 1:45  
 Sample Name : Canertinib-02  
 Acq. Operator : XXXX  
 Spec. Reported : MS Integration  
 Acq. Method : C:\Chem32\1\METHODS\1-POS-2MIN.M  
 Analysis Method : C:\Chem32\1\METHODS\1-POS-2MIN.M  
 Sample Info : Easy-Access Method: '1-POS-2MIN'  
 Method Info : Mobile Phase: A: Water(0.01%TFA) B: ACN(0.01%TFA)  
 Gradient: 5%B increase to 100%B within 0.8min,100%B for 1.1min.  
 Flow Rate:1.5mL/min  
 Column: Chromolith Fast Gradien RP-18e,50-3mm.  
 Column Temperature: 40C  
 Mass Range:100-1100



Integration Results for ADC1 A, ELSD

RetTim	Width	Area	Height	Area%
0.82	0.04	43.18	16.35	100.00

Integration Results for DAD1 A, Sig=214,4 Ref=off

RetTim	Width	Area	Height	Area%
0.80	0.03	753.90	319.94	100.00

Integration Results for DAD1 B, Sig=254,4 Ref=off

RetTim	Width	Area	Height	Area%
0.80	0.03	1037.05	419.28	100.00

LC/MS Report

Ret. Time: 0.81

<<<< POSITIVE SPECTRA >>>>

