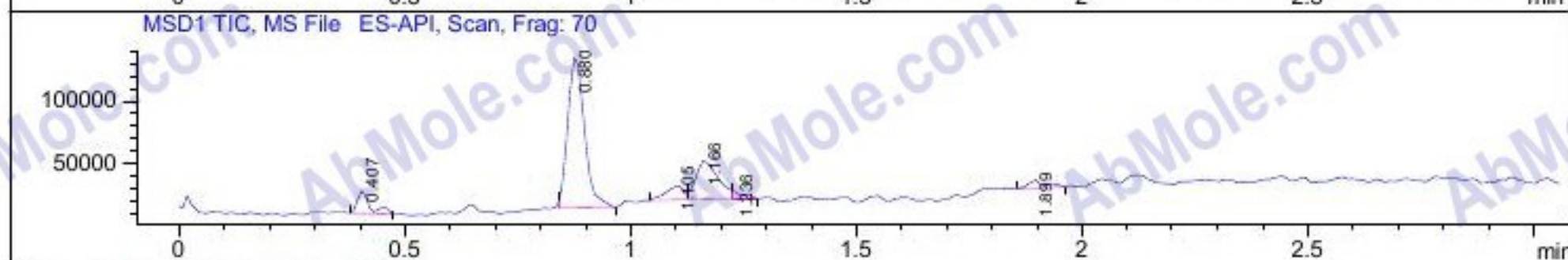
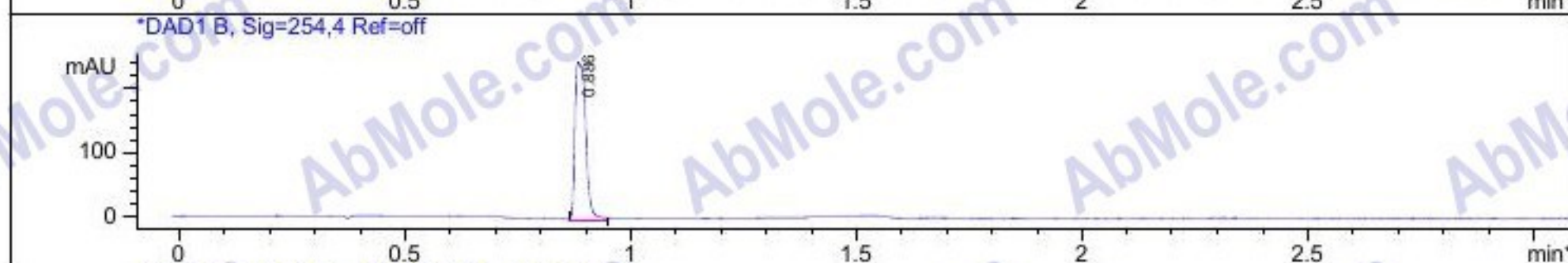
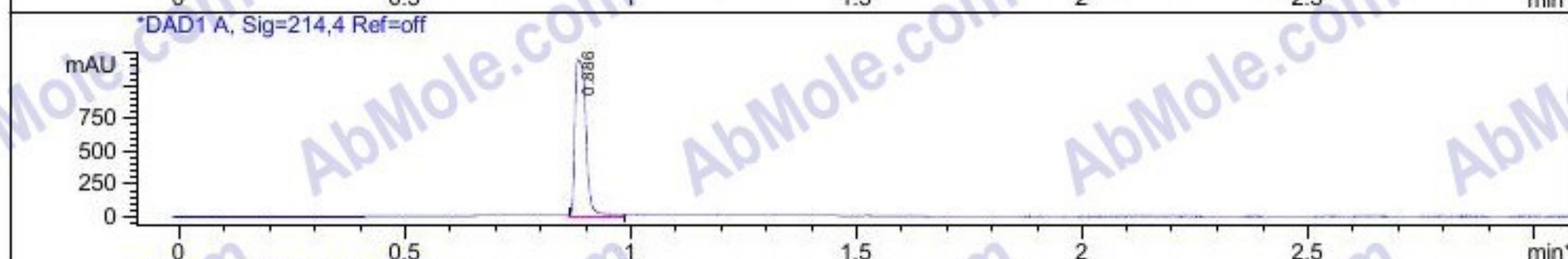
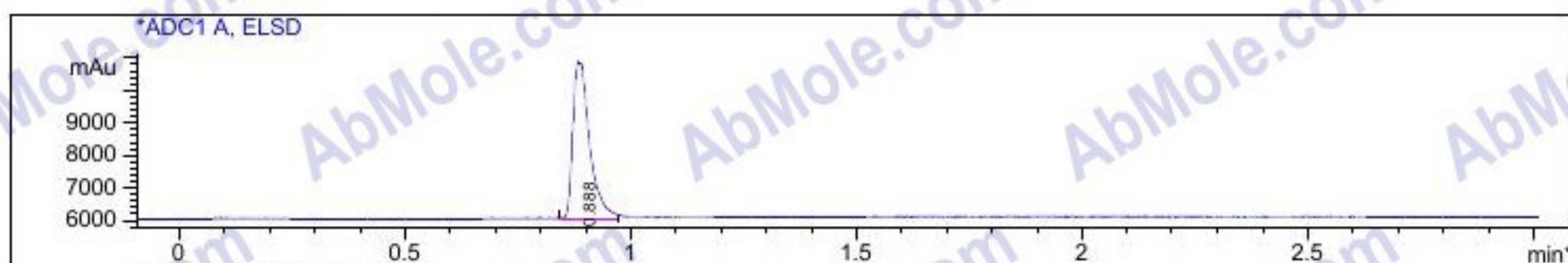


Sample Info : \*\*\* No target masses specified \*\*\*

Method Info : Mobile Phase: A: water (0.01%TFA) B: ACN (0.01%TFA)  
 Gradient: 5%B for 0.2 min, increase to 95%B within 1.3 min,  
 95%B for 1.6min, back to 5%B within 0.01min  
 Flow Rate: 2.0ml/min  
 Column : YMC C18-AQ, 4.6mm\*50mm, 3.0um  
 Oven Temperature : 45C



Integration Results for ADC1 A, ELSD

RetTim	Width	Area	Height	Area%
0.89	0.04	12203.82	4730.32	100.00

Integration Results for DAD1 A, Sig=214,4 Ref=off

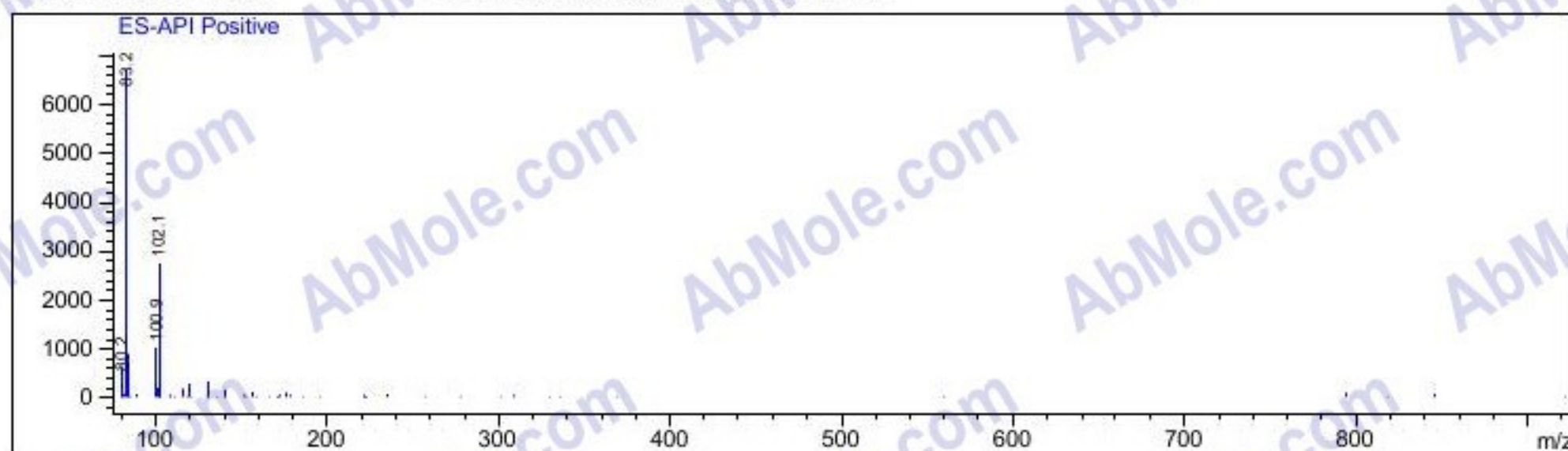
RetTim	Width	Area	Height	Area%
0.89	0.03	1984.52	1192.03	100.00

Integration Results for DAD1 B, Sig=254,4 Ref=off

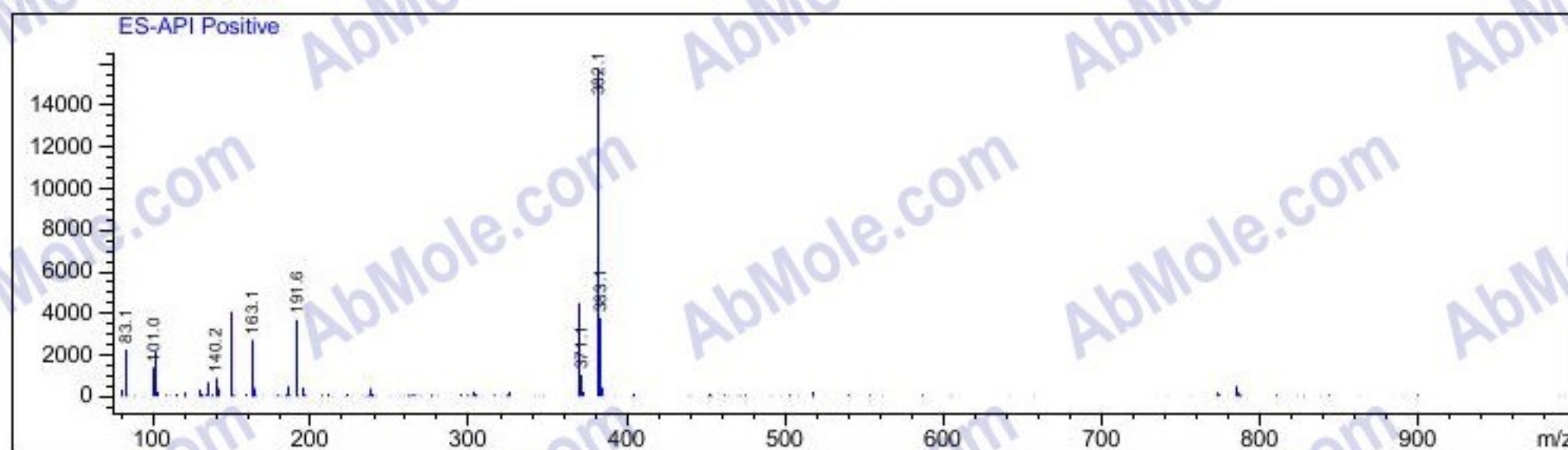
RetTim	Width	Area	Height	Area%
0.89	0.03	404.62	247.27	100.00

Ret. Time: 0.41

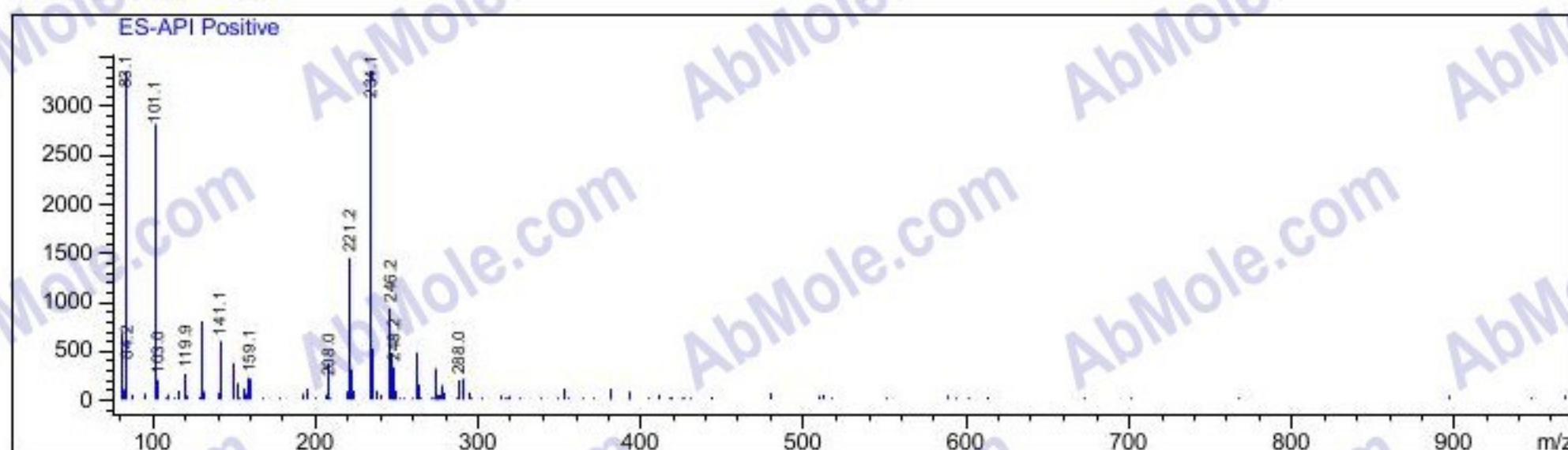
<<<< POSITIVE SPECTRA >>>>



Ret. Time: 0.88



Ret. Time: 1.11



Ret. Time: 1.17

