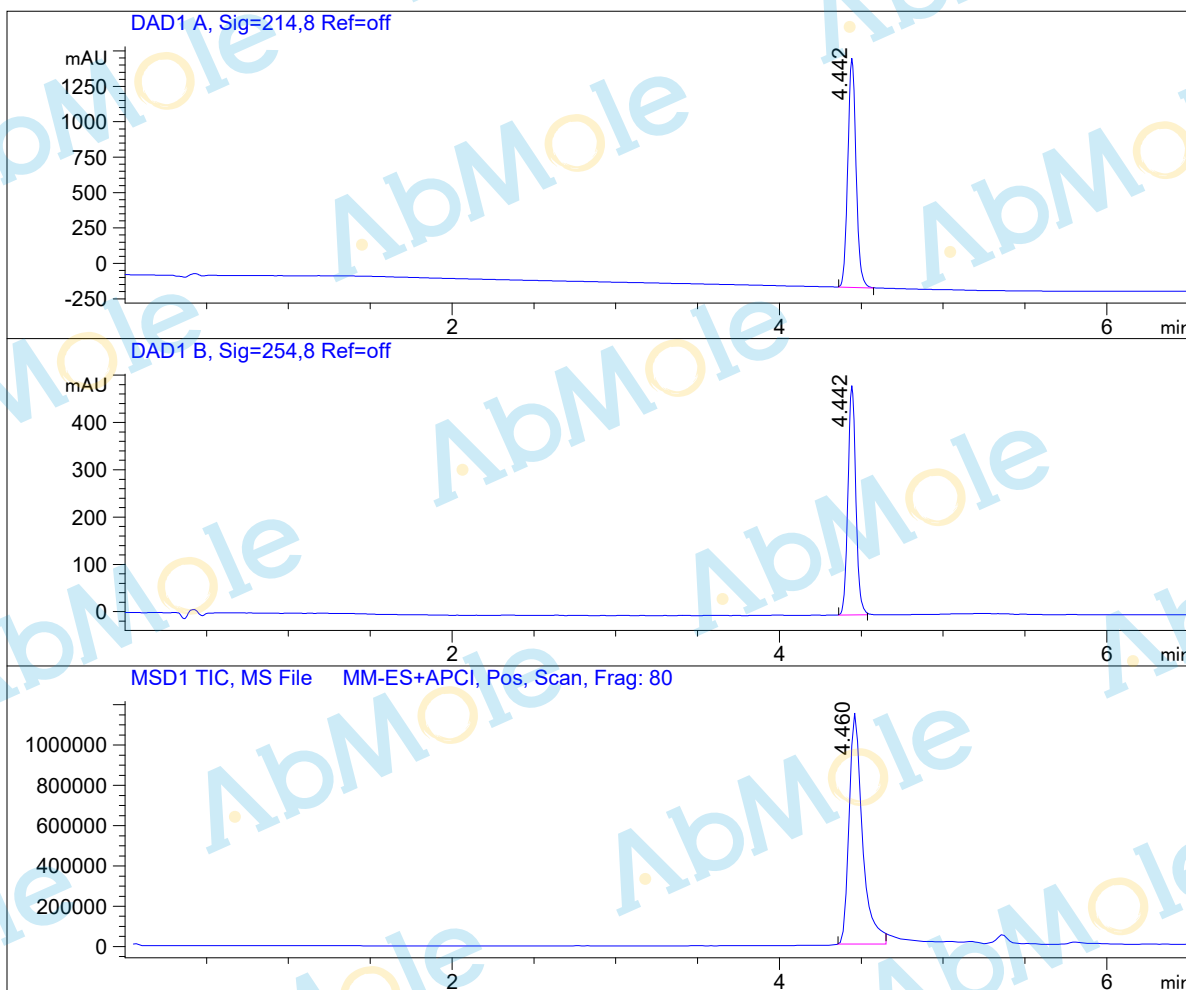


# LC-MS Report

Sample Name : Yoda1-01  
Data File : D:\DATA-LCMS-13\2019\11-19\29\4\Yoda1-01.D  
Injection Date : Fri, 29. Nov. 2019 Inj. Vol. : 3ul  
Acq Operator : LCMS-13 Location : Vial 61  
Acq. Method : D:\data-lcms-13\2019\11-19\29\4\P-05-95.M  
Method Info. : column:C18;column size:4.6\*50mm ;mobile phase:B (ACN)  
A(0.02%NH4Ac); gradient(B%)!as Acq.Method above



## Integration Results

Signal 1: DAD1 A, Sig=214,8 Ref=off

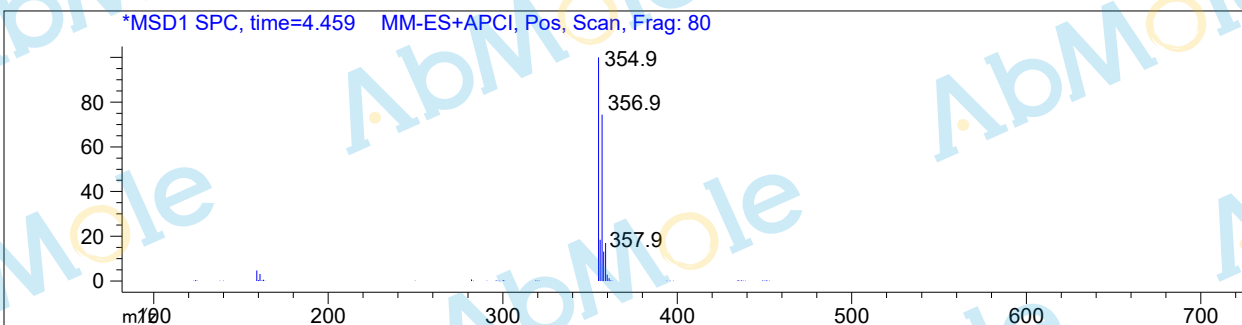
#	R.T.	Type	Height	Height%	Width	Area	Area %
1	4.442	MF	1625.395	100.000	0.058	5690.566	100.000

Signal 2: DAD1 B, Sig=254,8 Ref=off

#	R.T.	Type	Height	Height%	Width	Area	Area %
1	4.442	MF	486.928	100.000	0.056	1627.097	100.000

Signal 3: MSD1 TIC, MS File

#	R.T.	Type	Height	Height%	Width	Area	Area %
1	4.460	MM	1.159e+006	100.000	0.093	6.503e+006	100.000



\*\*\* End of Report \*\*\*