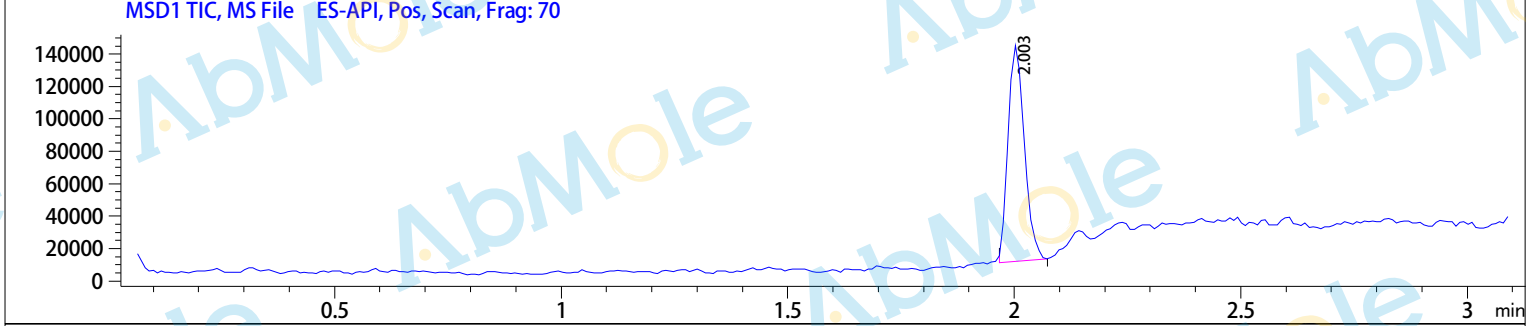
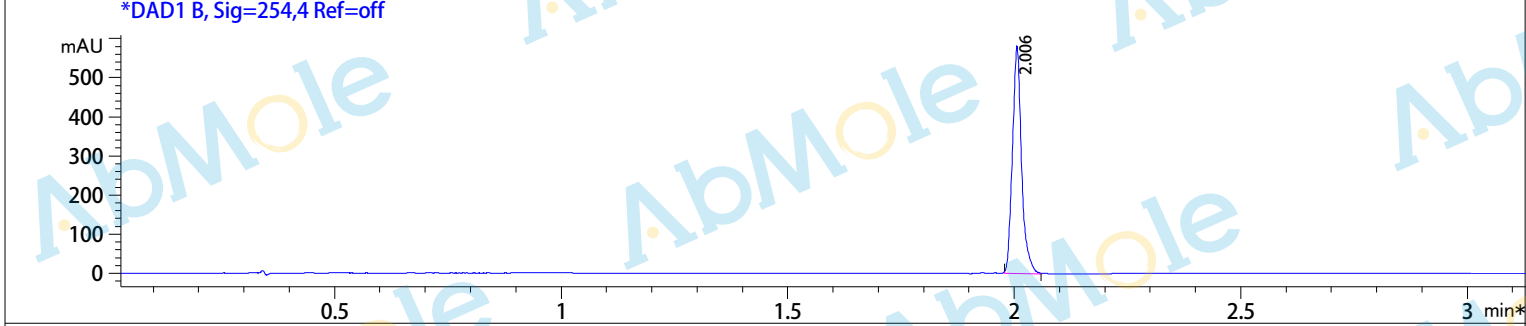
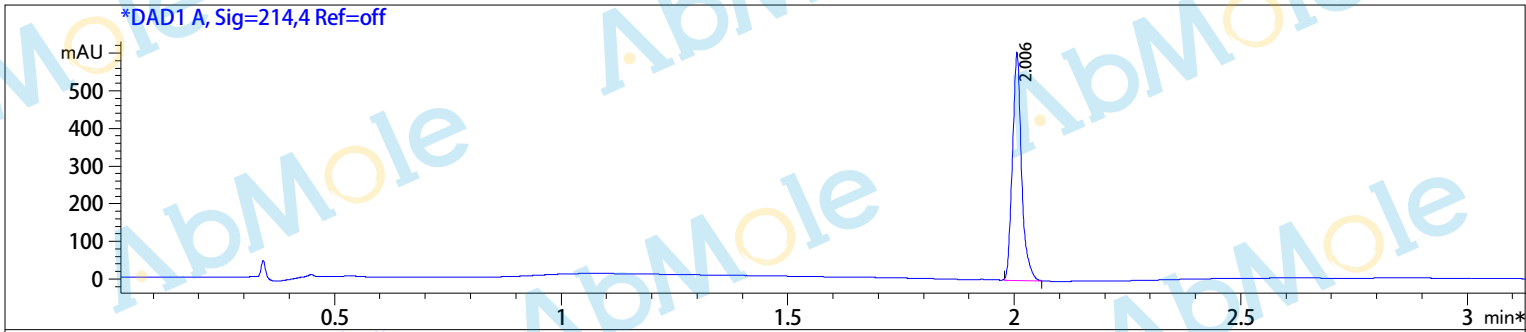


**Injection Date** : 5 Jan 21  
**Sample Name** : YM-58483-01  
**Method Info** : Column:SunFire C18 (4.6x 50 mm,3.5 um)  
 Mobile phase: H2O(0.01%TFA) (A) / ACN(0.01%TFA) (B)  
 Elution program: Gradient from 10 to95% of B in 1.4 min at 2ml/min  
 Temperature: 50 °C  
 Detection: UV (214 , 4 nm) and MS (ESI, Pos mode ,110 to 1000 amu)



Integration Results for DAD1 A, Sig=214,4 Ref=off

RetTim	Width	Area	Height	Area%
2.01	0.02	849.64	604.09	100.00

Integration Results for DAD1 B, Sig=254,4 Ref=off

RetTim	Width	Area	Height	Area%
2.01	0.02	816.65	580.47	100.00

Ret. Time: 2.00

<<<< POSITIVE SPECTRA >>>>

