

File D:\DATA\PRO2438-LCMS

Injection Date : 7 Nov 14 9:42 am +0800

Tgt Mass (EZX) :

Sample Name : XL765-LCMS

Location : P2-D-03

Acq. Operator : LCMS

Inj : 1

Spec. Reported : MS Integration

Inj Volume : 2 ul

Acq. Method : D:\METHODS\1-POS-3MIN.M

Analysis Method : D:\METHODS\1-POS-3MIN.M

Sample Info : *** No target masses specified ***

Method Info : Mobile Phase: A: water(0.01%TFA) B: ACN(0.01%TFA)

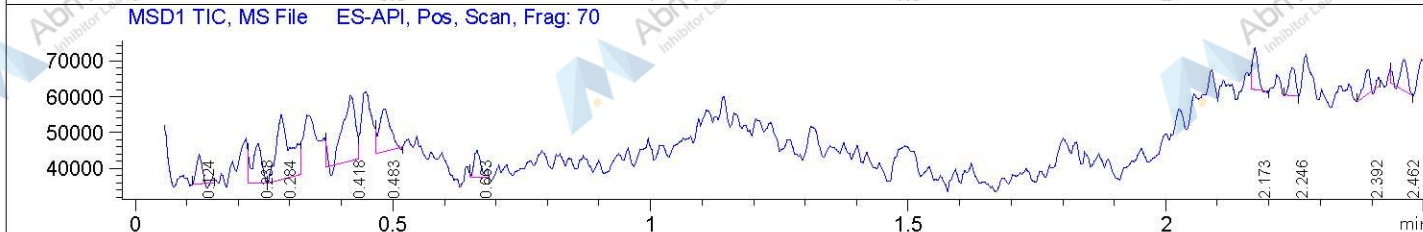
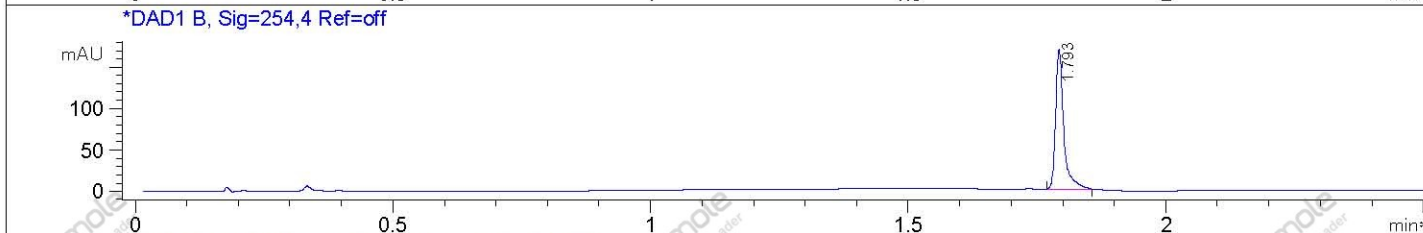
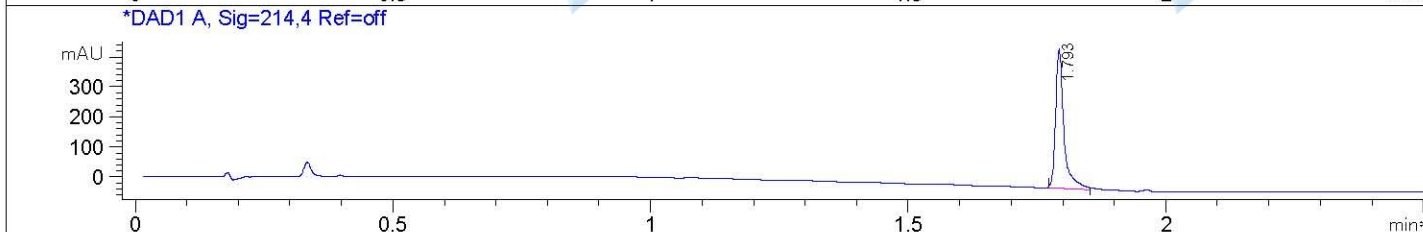
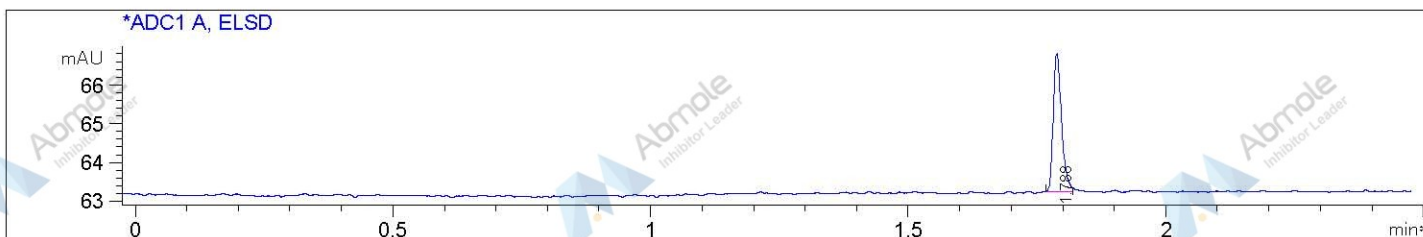
Gradient: 5%-95% B in 1.2min

Flow Rate: 2.2 ml/min

Column: Poroshell 120 EC-C18,4.6*30mm,2.7um

Oven Temperature: 50 C

Mass Range: 110-1500



Integration Results for ADC1 A, ELSD

RetTim	Width	Area	Height	Area%
1.79	0.02	4.05	3.58	100.00

Integration Results for DAD1 A, Sig=214,4 Ref=off

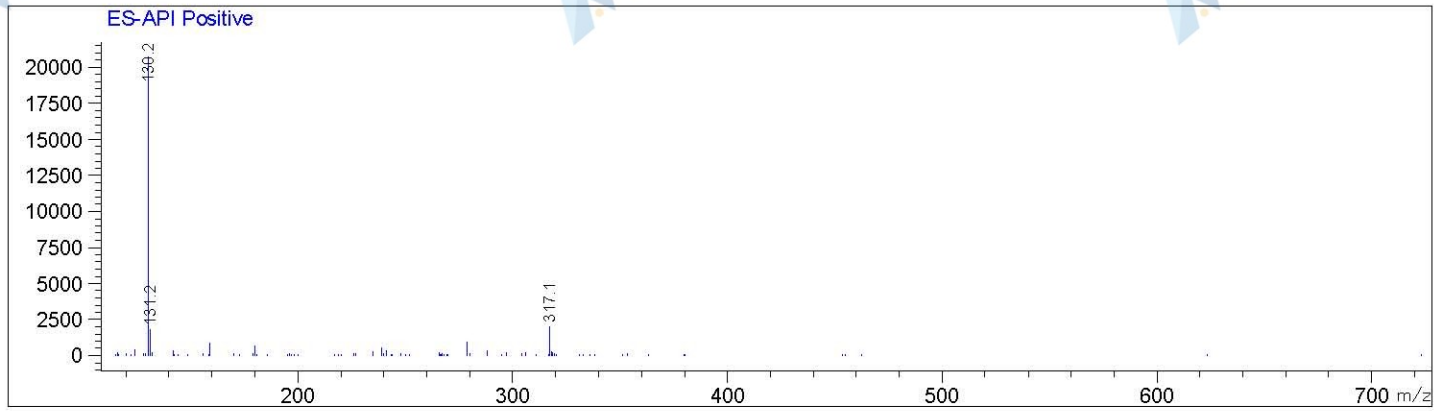
RetTim	Width	Area	Height	Area%
1.79	0.02	519.06	459.31	100.00

Integration Results for DAD1 B, Sig=254,4 Ref=off

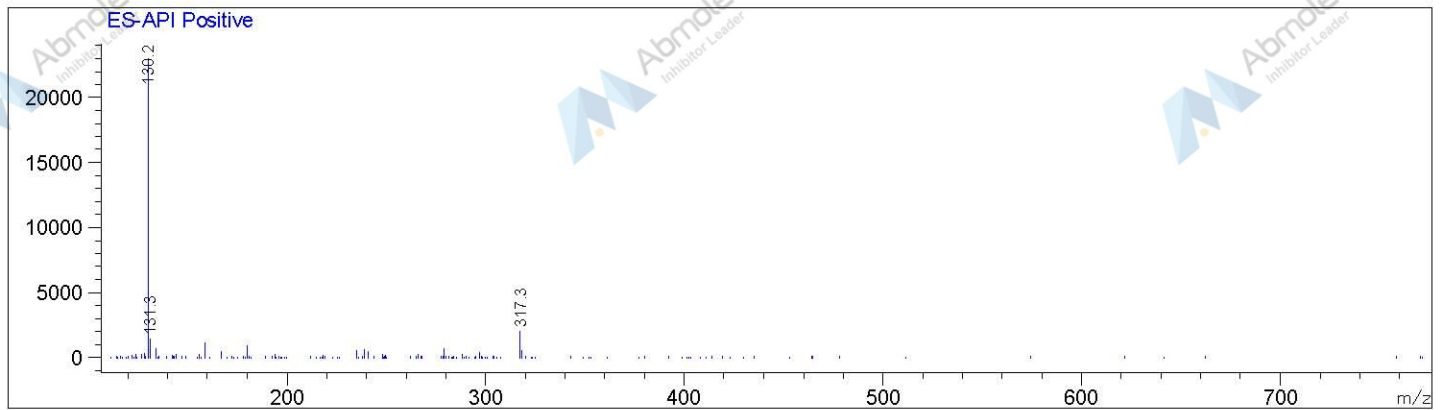
RetTim	Width	Area	Height	Area%
1.79	0.02	188.14	170.03	100.00

Ret. Time: 0.12

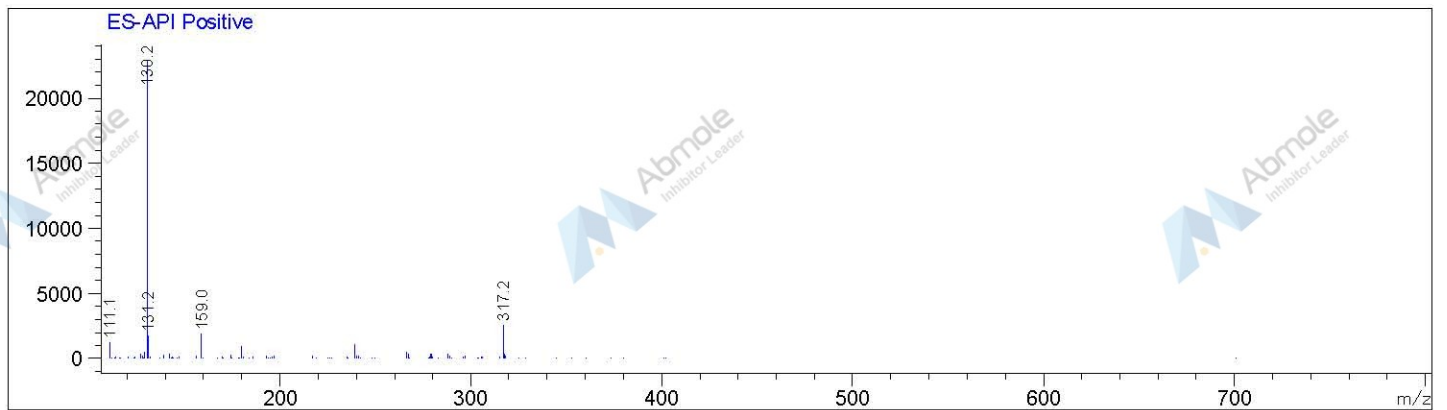
<<<< POSITIVE SPECTRA >>>>



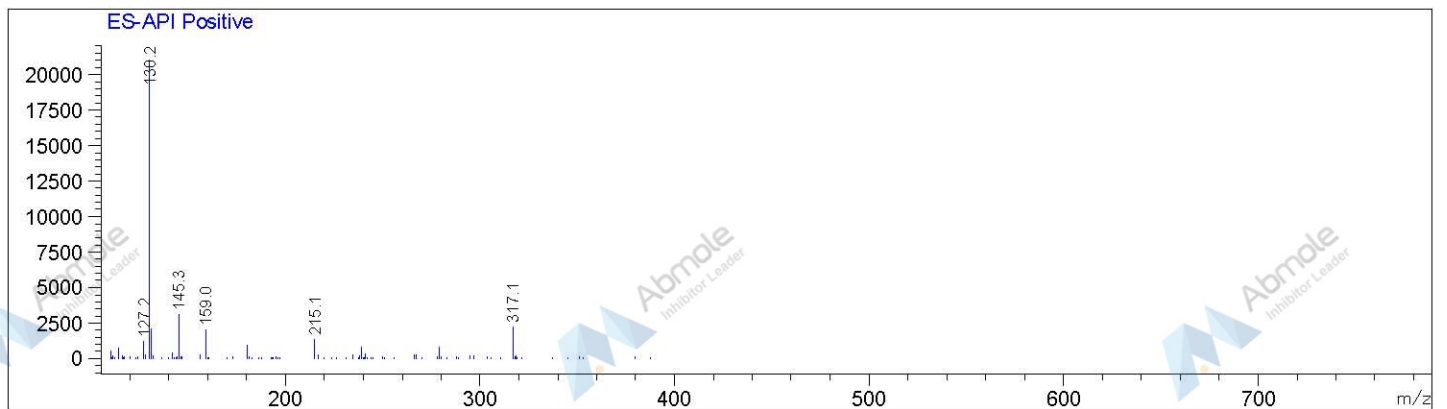
Ret. Time: 0.24



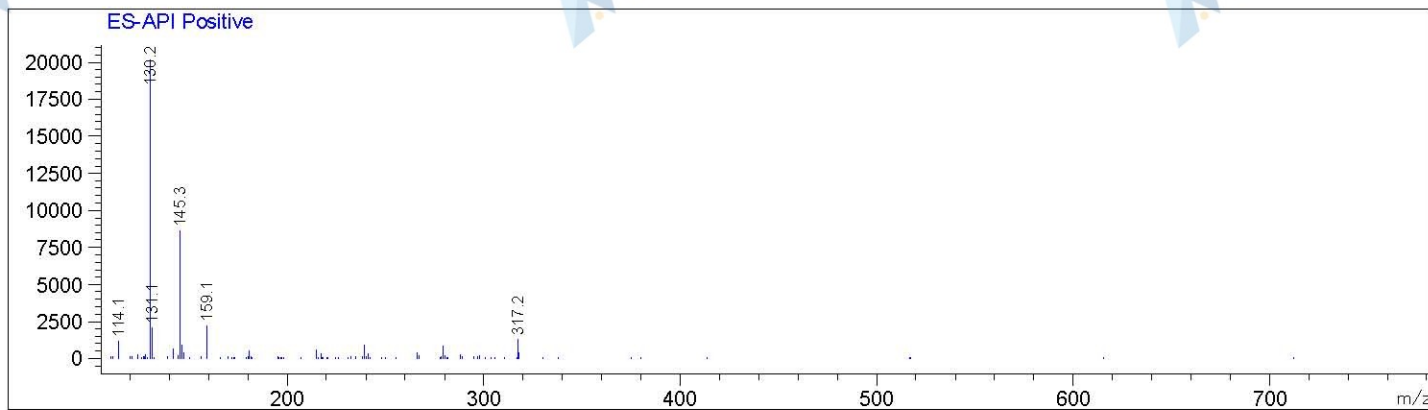
Ret. Time: 0.28



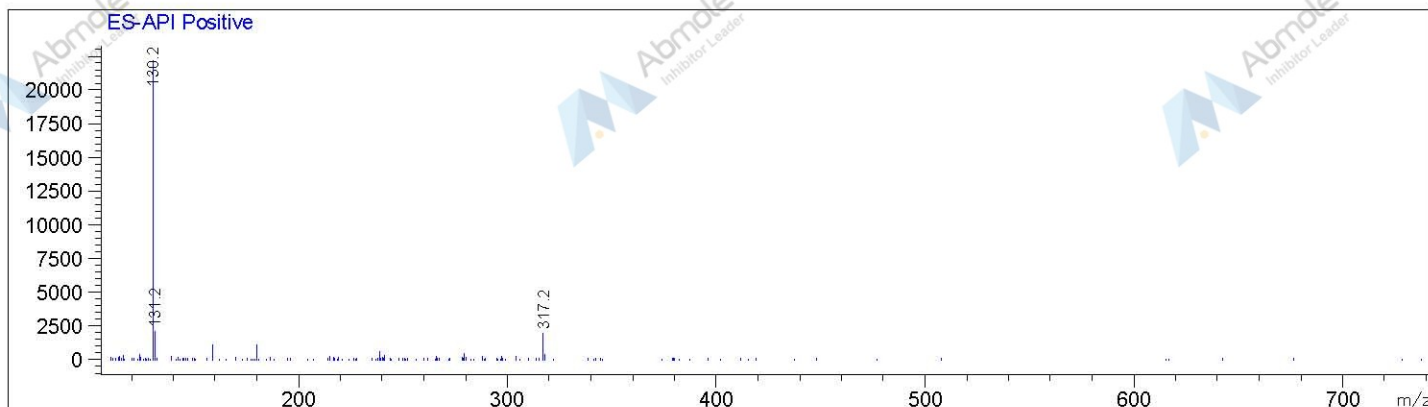
Ret. Time: 0.42



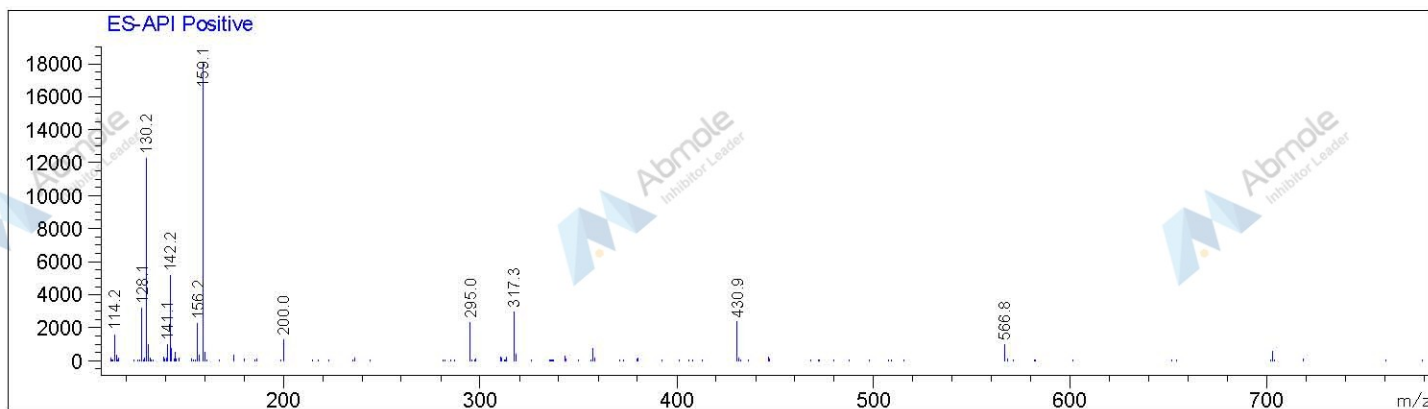
Ret. Time: 0.48



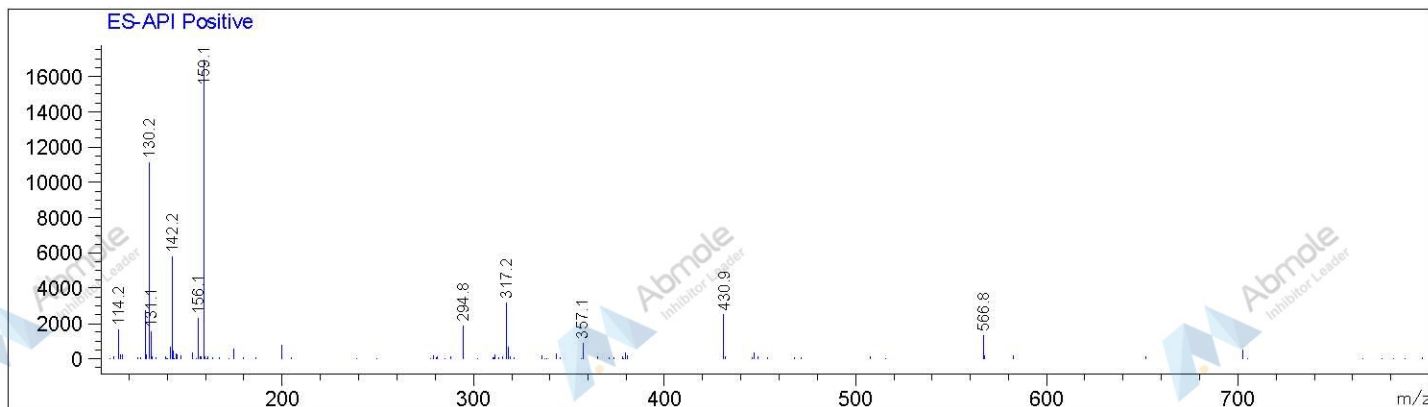
Ret. Time: 0.66



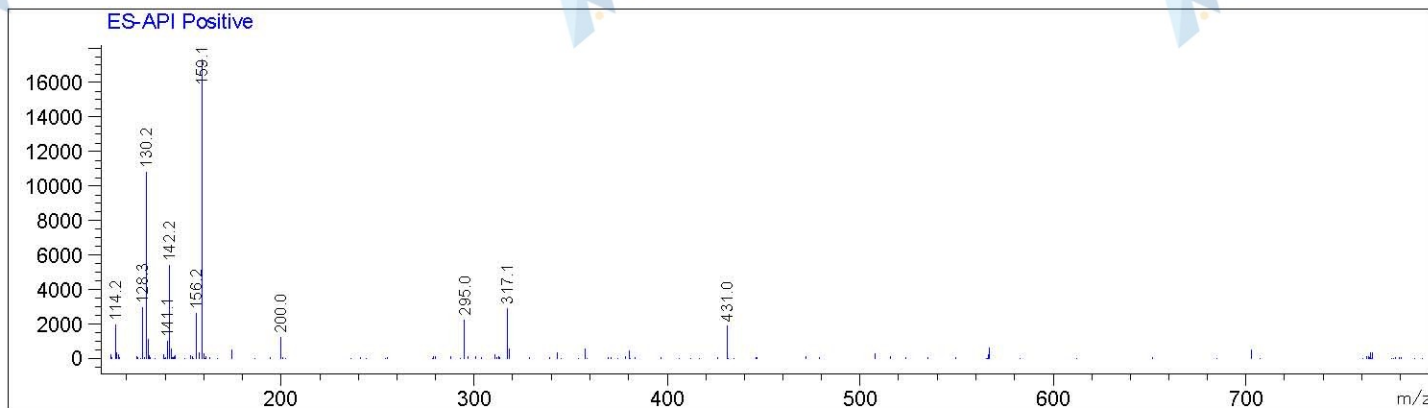
Ret. Time: 2.17



Ret. Time: 2.25



Ret. Time: 2.39



Ret. Time: 2.46

