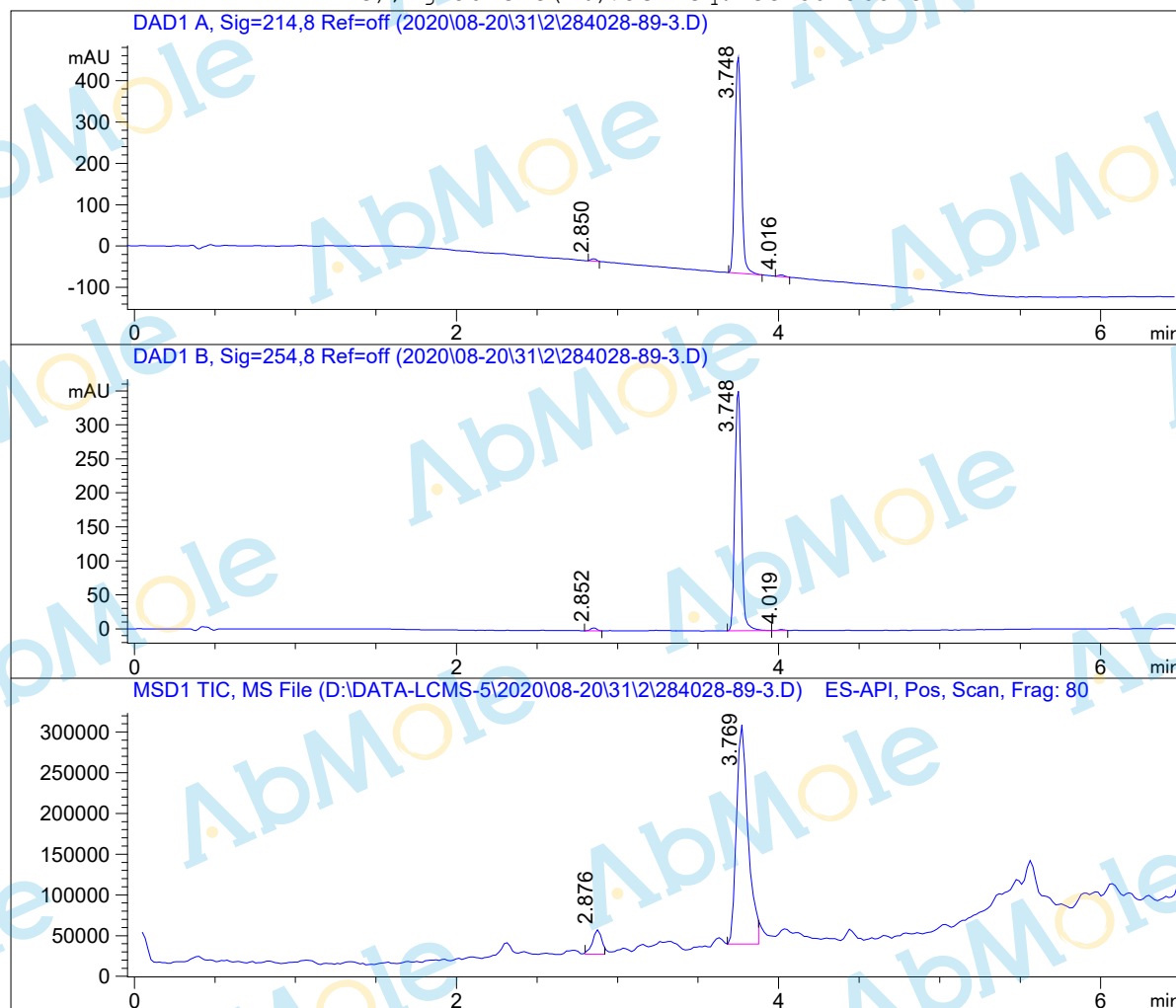


L C M S Report

Sample Name : XAV939-05
Data File : D:\DATA-LCMS-5\2020\08-20\31\2\284028-89-3.D
Injection Date : Mon, 31. Aug. 2020 Inj. Vol. : 2ul
Acq Operator : lcms-5 Location : Vial 54
Acq. Method : D:\data-lcms-5\2020\08-20\31\2\P-05-95.M
Method Info. : column:EC C18 4um 4.6*50mm ;mobile phase:B (ACN) A(0.02% NH4Ac); gradient (B%)! as Acq.Method above



Integration Results

Signal 1: DAD1 A, Sig=214,8 Ref=off

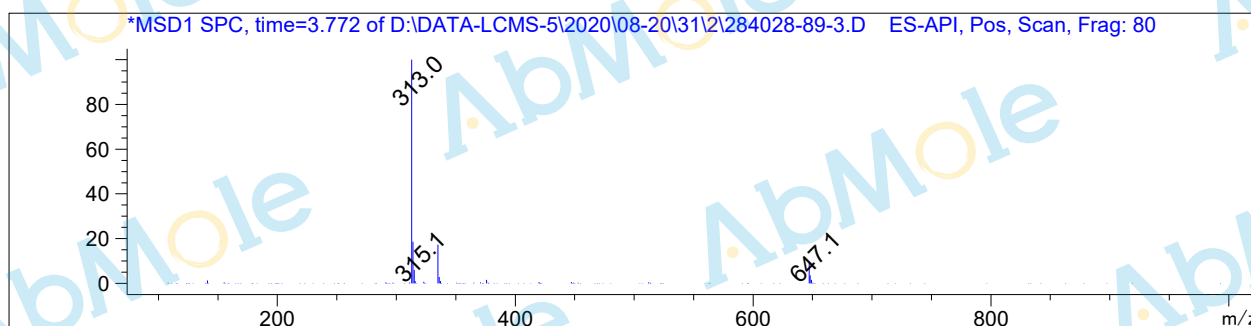
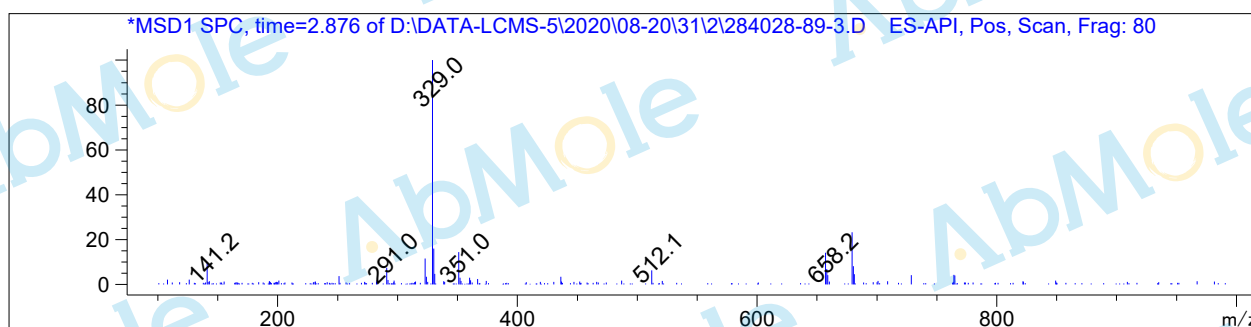
#	R.T.	Type	Height	Height%	Width	Area	Area %
1	2.850	MM	5.536	1.035	0.040	13.335	0.891
2	3.748	MM	524.620	98.127	0.047	1471.946	98.304
3	4.016	MM	4.480	0.838	0.045	12.058	0.805

Signal 2: DAD1 B, Sig=254,8 Ref=off

#	R.T.	Type	Height	Height%	Width	Area	Area %
1	2.852	MM	4.236	1.176	0.044	11.124	1.104
2	3.748	MF	354.506	98.438	0.047	992.914	98.529
3	4.019	FM	1.390	0.386	0.044	3.699	0.367

Signal 3: MSD1 TIC, MS File

#	R.T.	Type	Height	Height%	Width	Area	Area %
1	2.876	MM	30201.707	9.975	0.064	116879.945	7.931
2	3.769	MM	272584.125	90.025	0.083	1.357e+006	92.069



*** End of Report ***