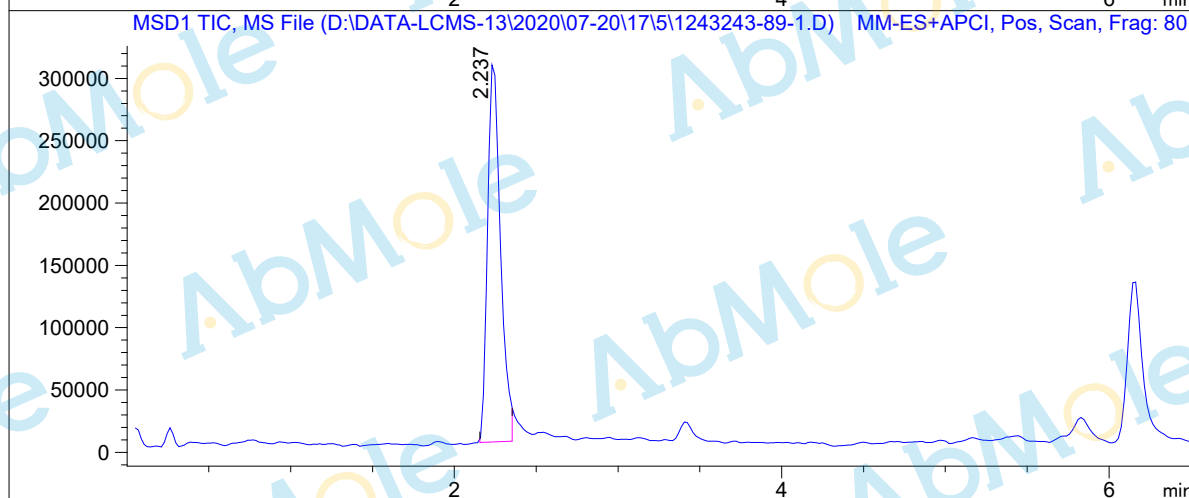
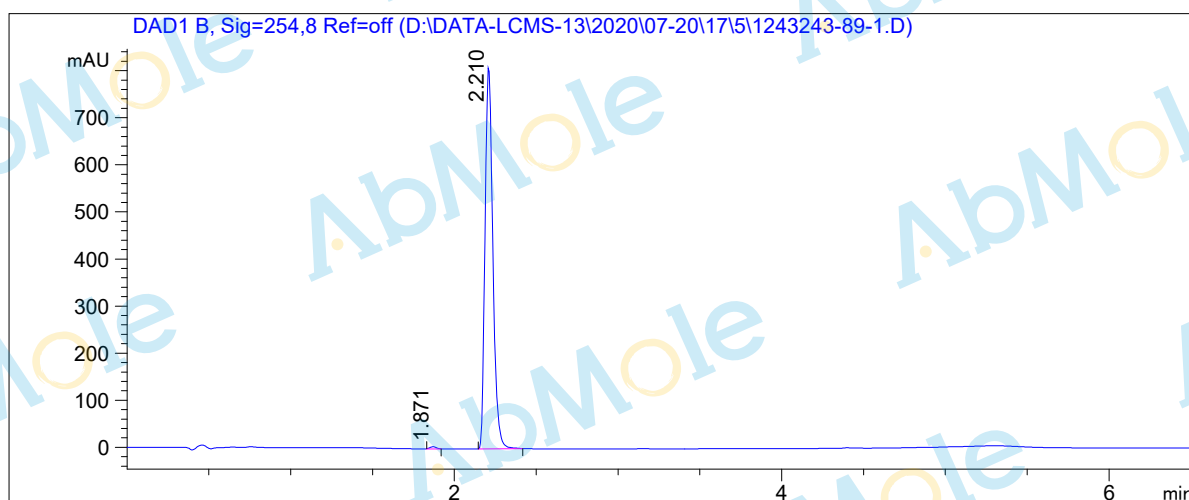


LCMS Report

Sample Name : Wnt-C59-02
Data File : D:\DATA-LCMS-13\2020\07-20\17\5\1243243-89-1.D
Injection Date : Sun, 19. Jul. 2020 Inj. Vol. : 2ul
Acq Operator : LCMS-13 Location : Vial 42
Acq. Method : D:\data-lcms-13\2020\07-20\17\5\P-05-95-TFA.M
Method Info. : column:Xbridge C18 5um 4.6*50mm ;mobile phase:B (ACN)
A(0.05%TFA) ; gradient (B%)!as Acq.Method above



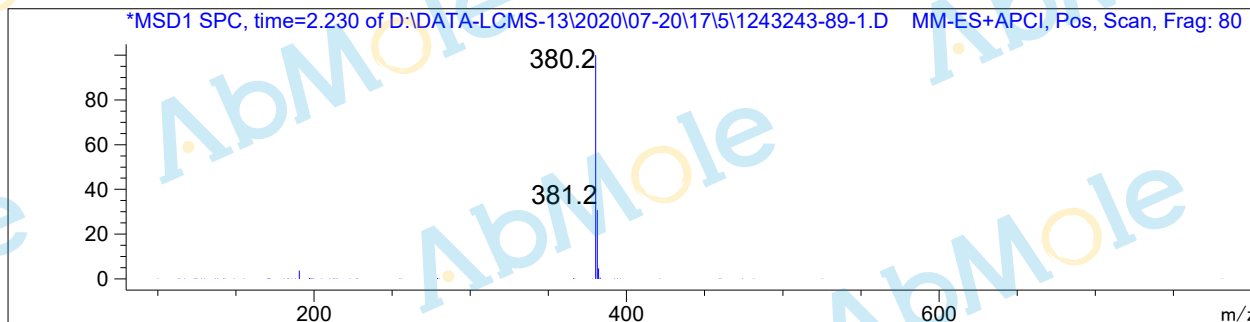
Integration Results

Signal 1: DAD1 B, Sig=254,8 Ref=off

#	R.T.	Type	Height	Height%	Width	Area	Area %
1	1.871	FM	4.657	0.566	0.045	12.553	0.461
2	2.210	MM	818.534	99.434	0.055	2707.639	99.539

Signal 2: MSD1 TIC, MS File

#	R.T.	Type	Height	Height%	Width	Area	Area %
1	2.237	MM	311492.125	100.000	0.090	1.673e+006	100.000



*** End of Report ***