

File D:\DATA\PRO2441-LCMS

Injection Date : 18 Nov 14 10:39 am +0800

Tgt Mass(EZX) :

Sample Name : WZ8040-LCMS

Location : P1-A-02

Acq. Operator : LCMS

Inj : 1

Spec. Reported : MS Integration

Inj Volume : 2 ul

Acq. Method : D:\METHODS\1-POS-3MIN.M

Analysis Method : D:\METHODS\1-POS-3MIN.M

Sample Info : \*\*\* No target masses specified \*\*\*

Method Info : Mobile Phase: A: water(0.01%TFA) B: ACN(0.01%TFA)

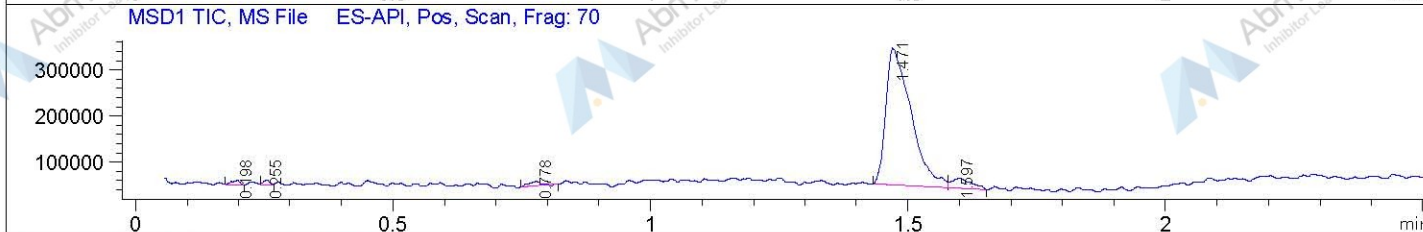
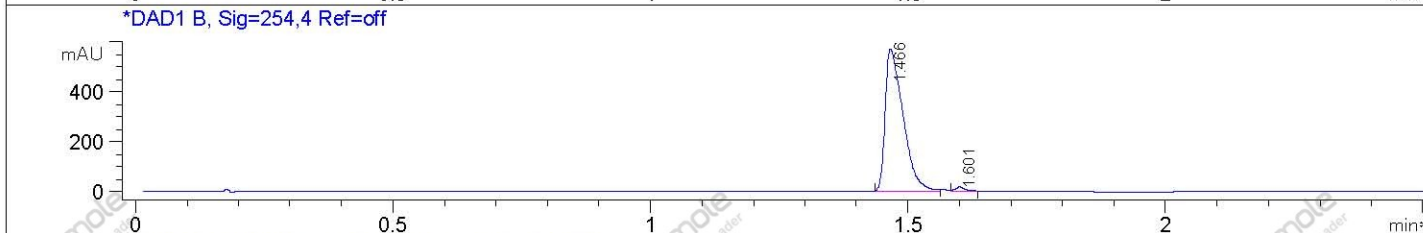
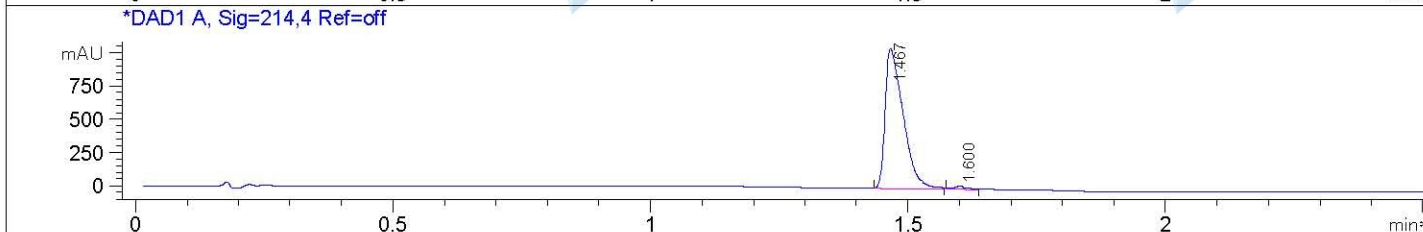
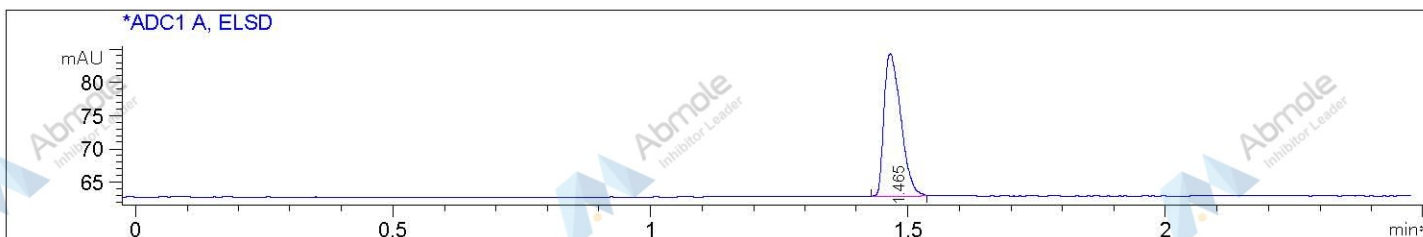
Gradient: 5%-95% B in 1.2min

Flow Rate: 2.2 ml/min

Column: Poroshell 120 EC-C18,4.6\*30mm,2.7um

Oven Temperature: 50 C

Mass Range: 110-1500



Integration Results for ADC1 A, ELSD

RetTim	Width	Area	Height	Area%
1.47	0.04	48.62	21.45	100.00

Integration Results for DAD1 A, Sig=214,4 Ref=off

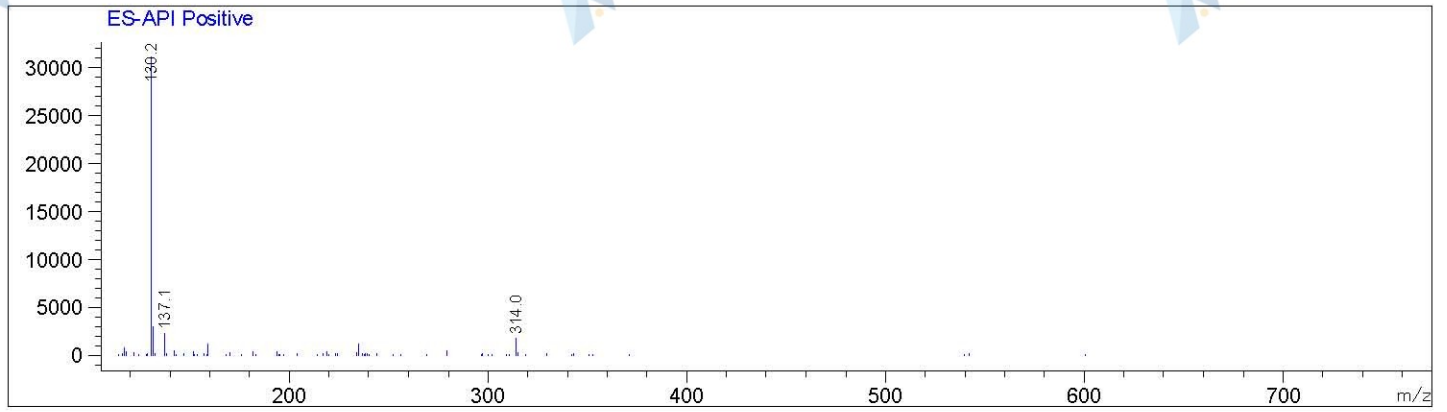
RetTim	Width	Area	Height	Area%
1.47	0.04	2529.92	1052.52	98.42
1.60	0.02	40.73	24.46	1.58

Integration Results for DAD1 B, Sig=254,4 Ref=off

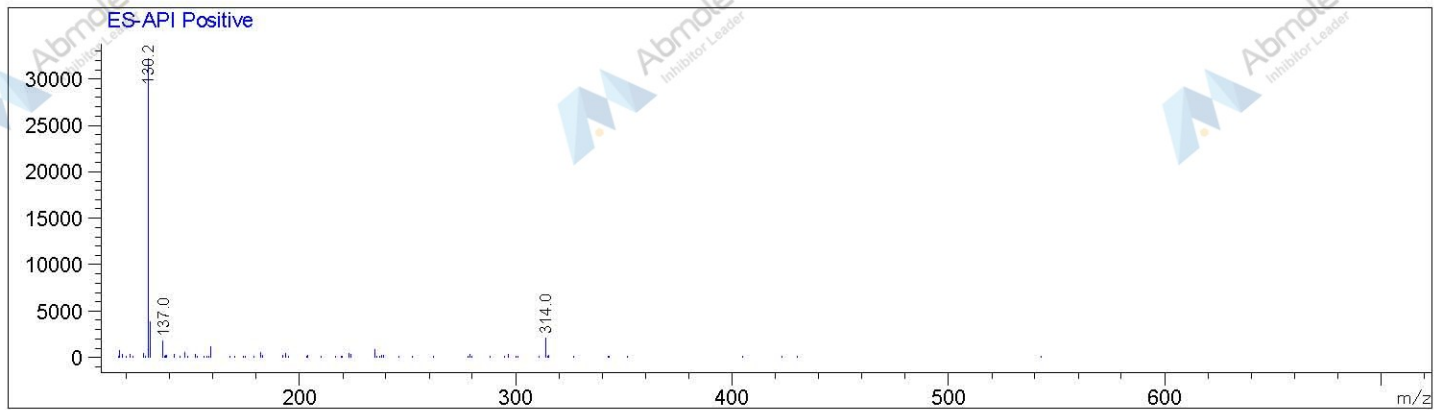
RetTim	Width	Area	Height	Area%
1.47	0.04	1362.25	570.34	98.42
1.60	0.02	21.92	17.55	1.58

Ret. Time: 0.20

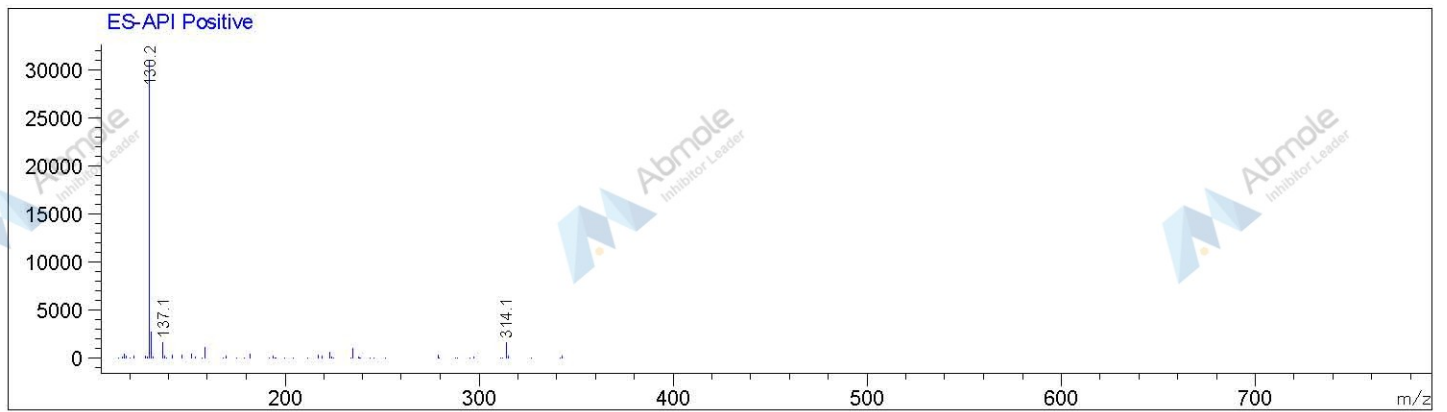
<<<< POSITIVE SPECTRA >>>>



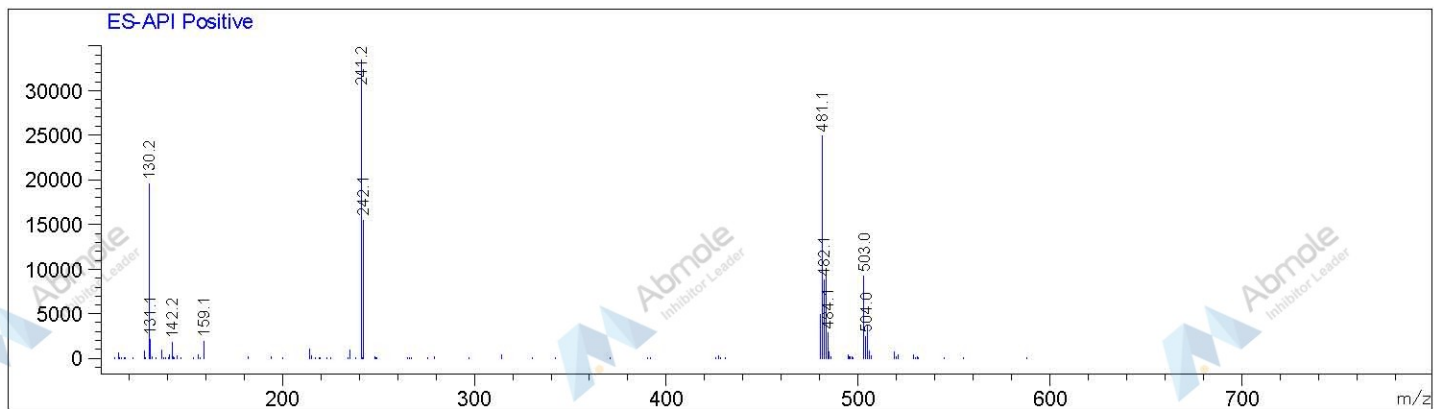
Ret. Time: 0.25



Ret. Time: 0.78



Ret. Time: 1.47



Ret. Time: 1.60

