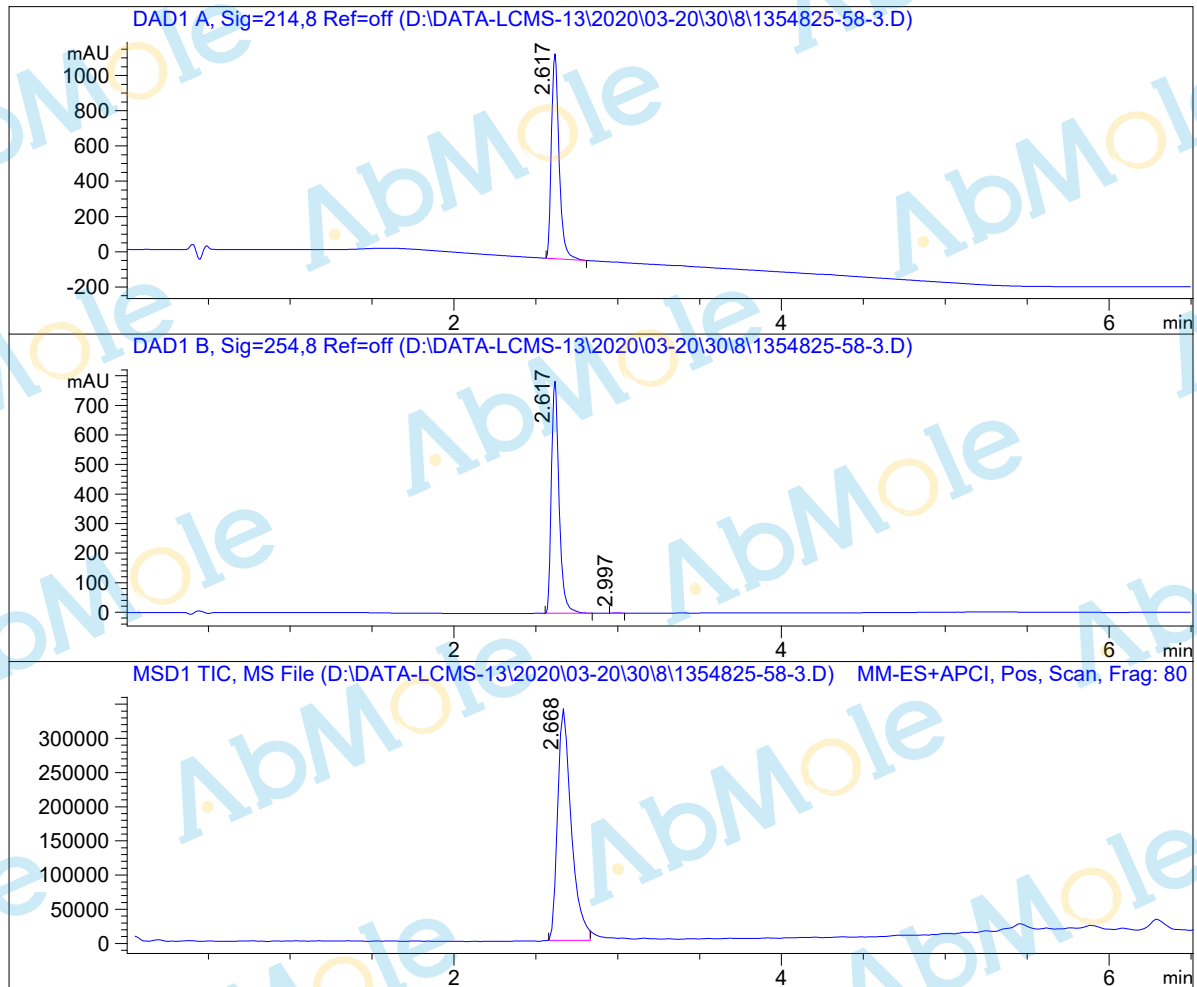


LCMS Report

Sample Name : WEHI-345-01
Data File : D:\DATA-LCMS-13\2020\03-20\30\8\1354825-58-3.D
Injection Date : Mon, 30. Mar. 2020 Inj. Vol. : 2ul
Acq Operator : LCMS-13 Location : Vial 46
Acq. Method : D:\data-lcms-13\2020\03-20\30\8\P-05-95-TFA.M
Method Info. : column:Xbridge C18 5um 4.6*50mm ;mobile phase:B (ACN)
A(0.05%TFA) ; gradient (B%)!as Acq.Method above



Integration Results

Signal 1: DAD1 A, Sig=214,8 Ref=off

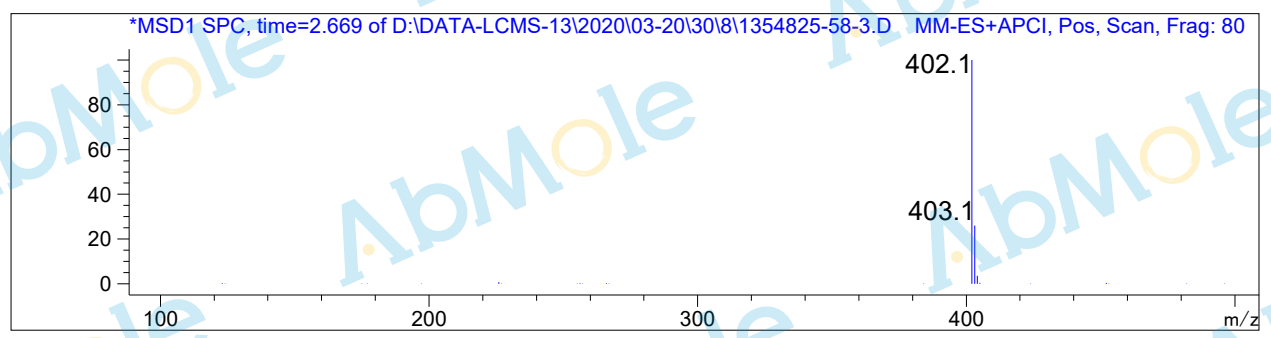
#	R.T.	Type	Height	Height%	Width	Area	Area %
1	2.617	MF	1168.500	100.000	0.054	3809.868	100.000

Signal 2: DAD1 B, Sig=254,8 Ref=off

#	R.T.	Type	Height	Height%	Width	Area	Area %
1	2.617	BB	785.861	99.826	0.050	2573.003	99.852
2	2.997	FM	1.369	0.174	0.046	3.815	0.148

Signal 3: MSD1 TIC, MS File

#	R.T.	Type	Height	Height%	Width	Area	Area %
1	2.668	MF	342658.094	100.000	0.096	1.968e+006	100.000



*** End of Report ***