

LCMS Report

Sample Name : Vilazodone-01
Data File : D:\DATA-LCMS-13\2020\02-20\27\2\Vilazodone-01.D
Injection Date : Thu, 27. Feb. 2020 Inj. Vol. : 4ul
Acq Operator : LCMS-13 Location : Vial 21
Acq. Method : D:\data-lcms-13\2020\02-20\27\2\P-05-95.M
Method Info. : column:Eclipse XDB-C18 5um 4.6*150mm ;mobile phase:B(ACN) A(0.02%NH4AC); gradient(B%)!as Acq.Method above



Integration Results

Signal 1: DAD1 A, Sig=214,8 Ref=off

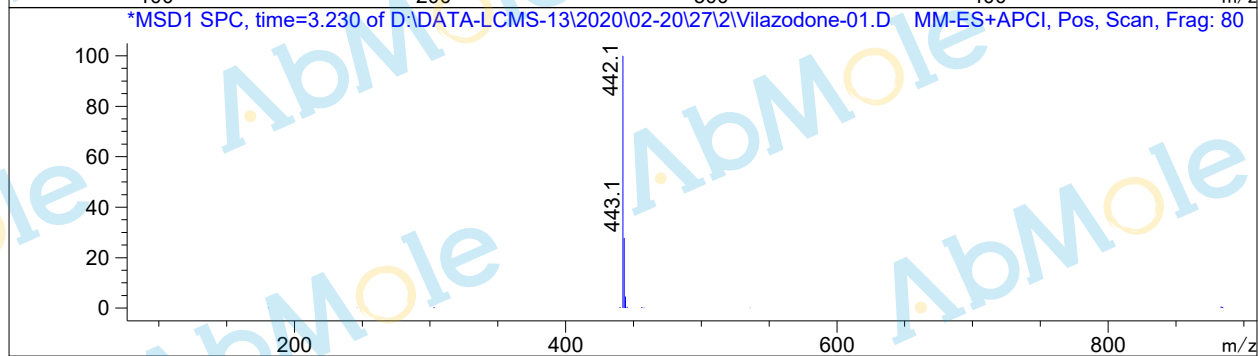
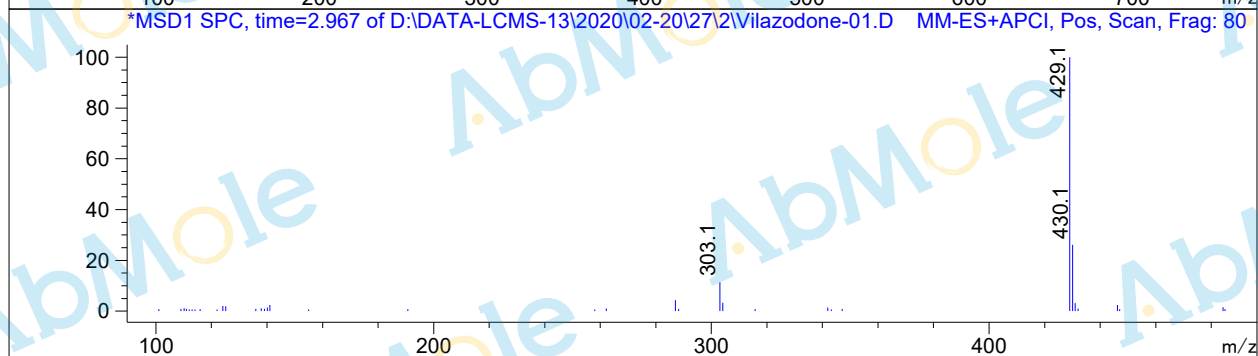
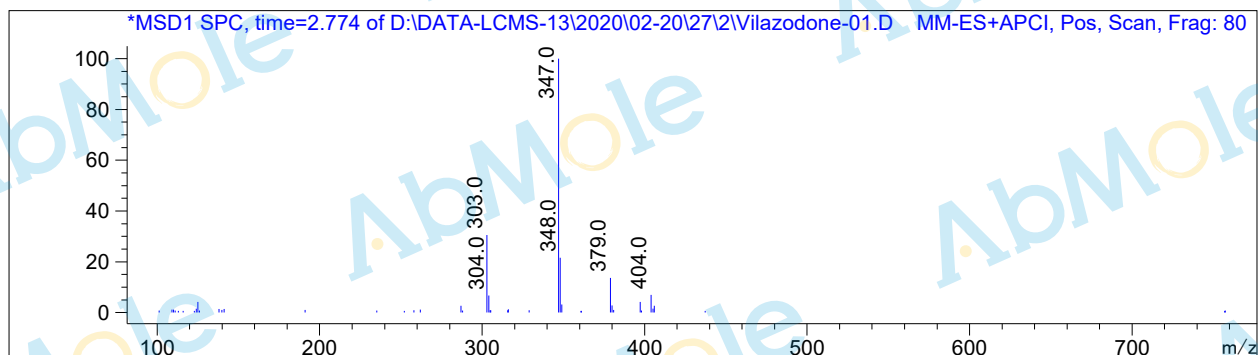
#	R.T.	Type	Height	Height%	Width	Area	Area %
1	2.745	FM	13.392	0.755	0.050	40.079	0.591
2	2.945	MF	11.555	0.651	0.047	32.835	0.484
3	3.212	BB	1749.109	98.594	0.059	6709.226	98.925

Signal 2: DAD1 B, Sig=254,8 Ref=off

#	R.T.	Type	Height	Height%	Width	Area	Area %
1	2.945	BB	16.142	1.277	0.046	46.630	0.967
2	3.212	BB	1248.019	98.723	0.059	4775.015	99.033

Signal 3: MSD1 TIC, MS File

#	R.T.	Type	Height	Height%	Width	Area	Area %
1	2.769	MM	13856.115	4.191	0.061	50719.402	2.922
2	2.967	MM	10994.713	3.326	0.062	40956.602	2.359
3	3.238	BB	305730.875	92.483	0.084	1.644e+006	94.719



*** End of Report ***