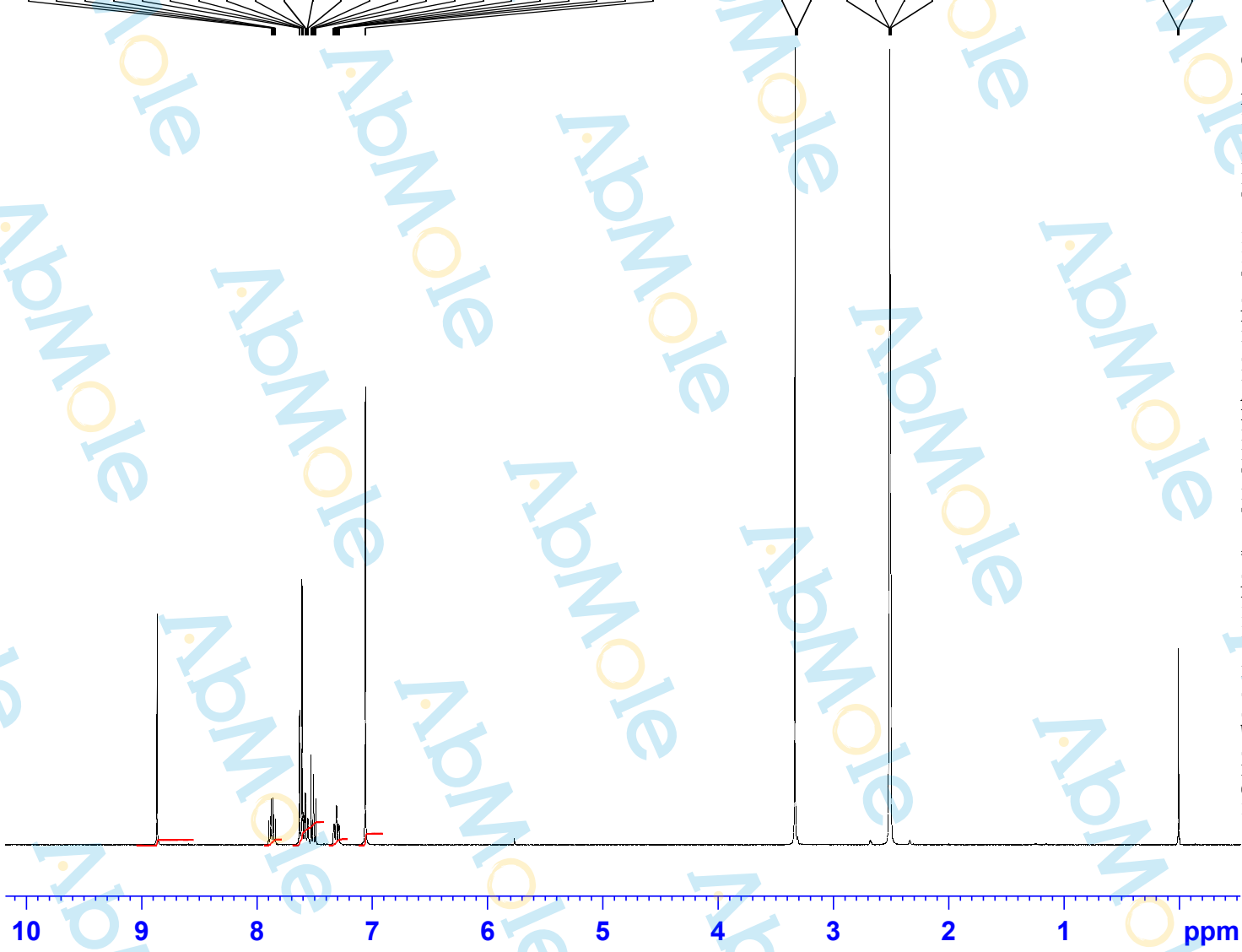




7.878  
7.862  
7.857  
7.841  
7.632  
7.630  
7.611  
7.602  
7.586  
7.579  
7.562  
7.556  
7.531  
7.513  
7.509  
7.491  
7.335  
7.330  
7.314  
7.309  
7.293  
7.287  
7.060

3.333  
3.310  
2.518  
2.514  
2.509  
2.505

0.015  
0.007



Current Data Parameters  
NAME VX-745-01  
EXPNO 1  
PROCNO 1

F2 - Acquisition Parameters  
Date\_ 20190312  
Time\_ 12.43  
INSTRUM spect  
PROBHD 5 mm PADUL 13C  
PULPROG zg30  
TD 65536  
SOLVENT DMSO  
NS 8  
DS 2  
SWH 8012.820 Hz  
FIDRES 0.122266 Hz  
AQ 4.0894465 sec  
RG 199.46  
DW 62.400 usec  
DE 6.50 usec  
TE 296.6 K  
D1 1.00000000 sec  
TD0 1

==== CHANNEL f1 =====  
SFO1 400.1324710 MHz  
NUC1 1H  
P1 10.00 usec  
PLW1 20.00000000 W

F2 - Processing parameters  
SI 65536  
SF 400.1300000 MHz  
WDW EM  
SSB 0  
LB 0.30 Hz  
GB 0  
PC 1.00