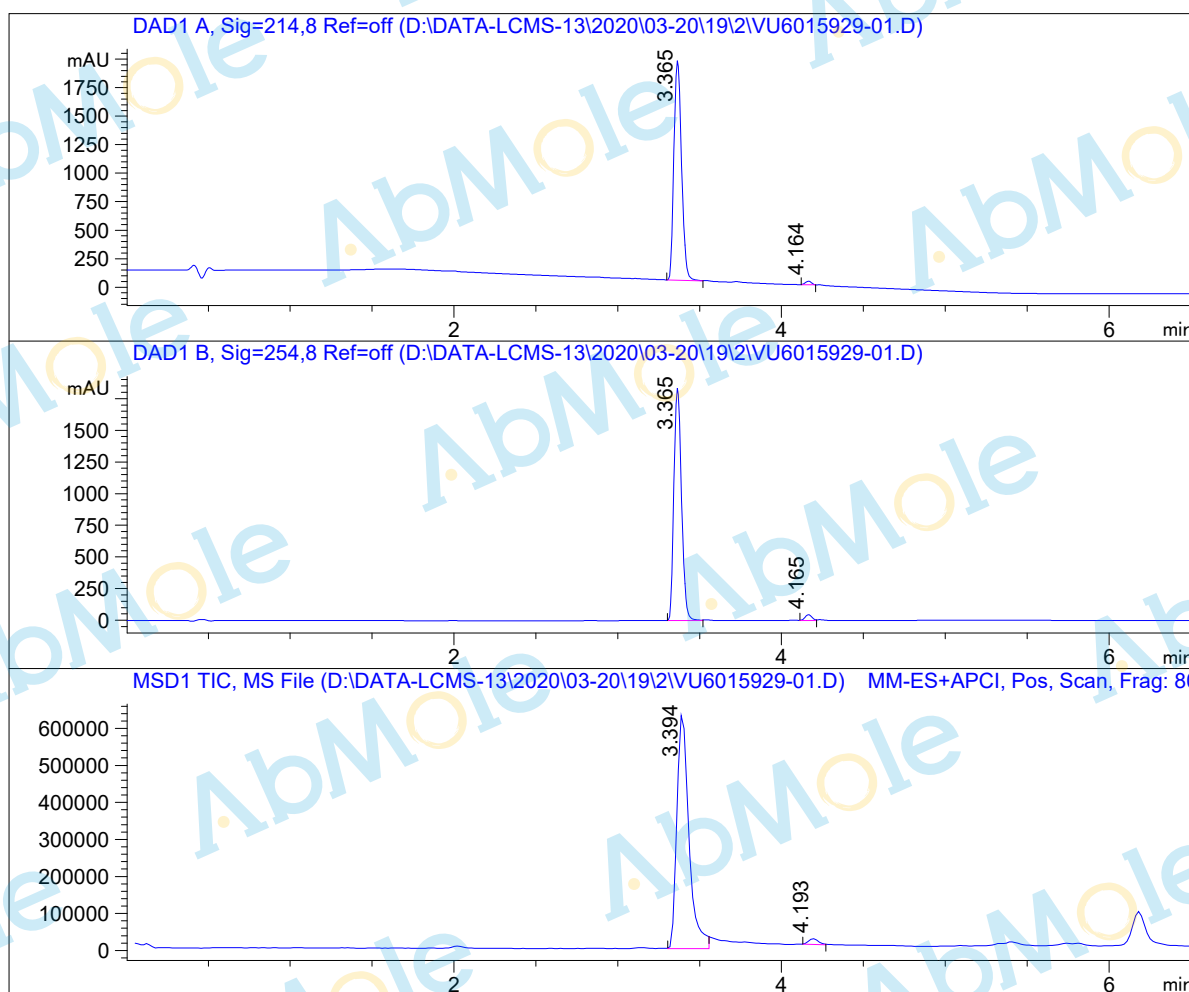


LCMS Report

Sample Name : VU6015929-01
Data File : D:\DATA-LCMS-13\2020\03-20\19\2\VU6015929-01.D
Injection Date : Thu, 19. Mar. 2020 Inj. Vol. : 3ul
Acq Operator : LCMS-13 Location : Vial 52
Acq. Method : D:\data-lcms-13\2020\03-20\19\2\P-05-95-TFA.M
Method Info. : column:Ecclipse XDB-C18 5um 4.6*150mm ;mobile phase:B(ACN) A(0.02%NH4AC); gradient(B%)!as Acq.Method above



Integration Results

Signal 1: DAD1 A, Sig=214,8 Ref=off

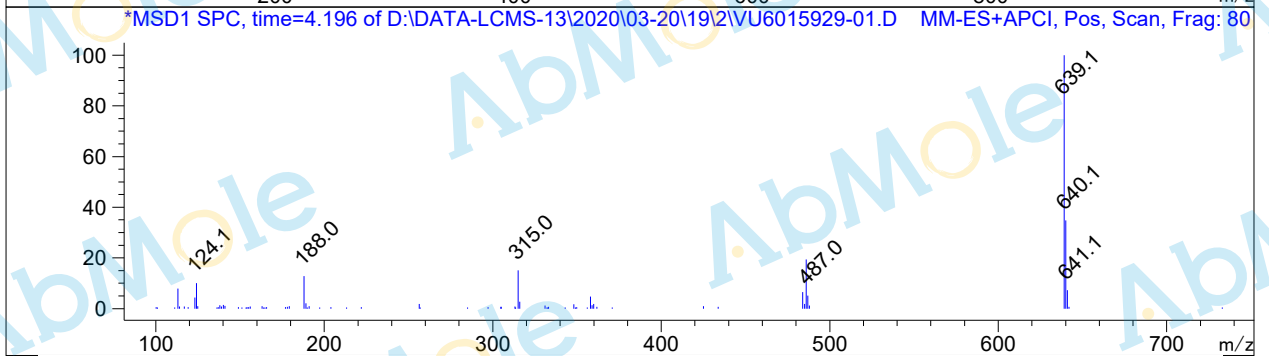
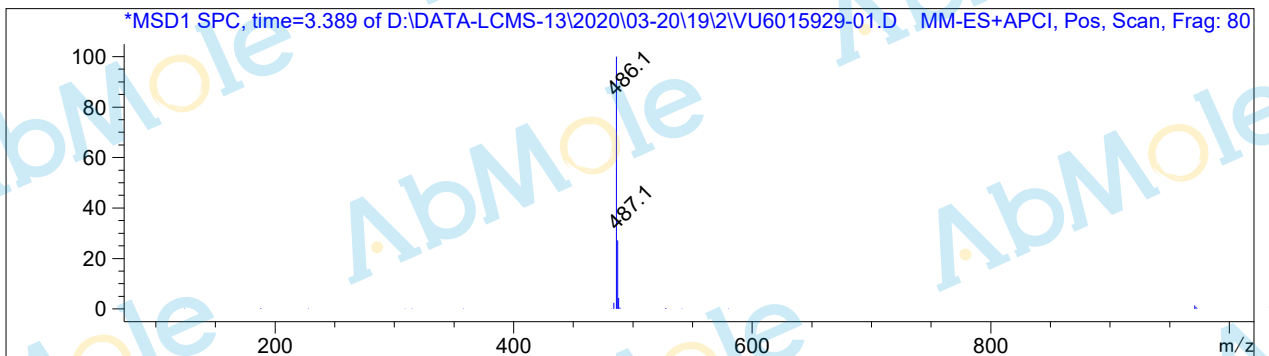
#	R.T.	Type	Height	Height%	Width	Area	Area %
1	3.365	MM	1938.254	98.353	0.054	6228.593	98.635
2	4.164	MM	32.467	1.647	0.044	86.219	1.365

Signal 2: DAD1 B, Sig=254,8 Ref=off

#	R.T.	Type	Height	Height%	Width	Area	Area %
1	3.365	MF	1847.159	97.563	0.053	5913.431	97.766
2	4.165	MF	46.136	2.437	0.049	135.117	2.234

Signal 3: MSD1 TIC, MS File

#	R.T.	Type	Height	Height%	Width	Area	Area %
1	3.394	MM	645579.313	97.663	0.085	3.281e+006	98.193
2	4.193	MM	15448.859	2.337	0.065	60364.301	1.807



*** End of Report ***