

LC-MS Report

Sample Name : VRT752271-03
Data File : D:\DATA-LCMS-13\2020\01-20\21\5\VRT752271-03.D
Injection Date : Tue, 21. Jan. 2020 Inj. Vol. : 3ul
Acq Operator : LCMS-13 Location : Vial 45
Acq. Method : D:\data-lcms-13\2020\01-20\21\5\P-05-95.M
Method Info. : column:Xbridge C18 5um 4.6*30mm ;mobile phase:B (ACN)
A(0.02%NH4Ac) ; gradient (B%)!as Acq.Method above



Integration Results

Signal 1: DAD1 A, Sig=214,8 Ref=off

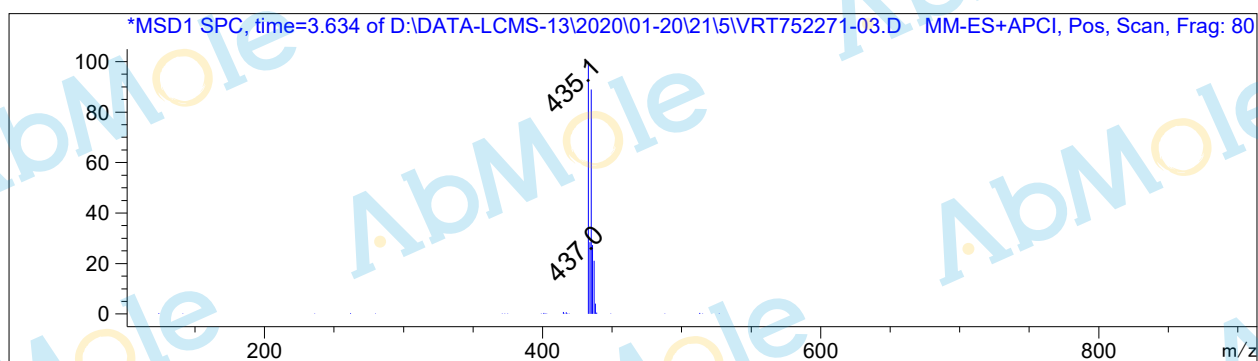
#	R.T.	Type	Height	Height%	Width	Area	Area %
1	3.615	BB	1151.687	100.000	0.047	3407.994	100.000

Signal 2: DAD1 B, Sig=254,8 Ref=off

#	R.T.	Type	Height	Height%	Width	Area	Area %
1	3.615	MF	1522.820	100.000	0.049	4478.740	100.000

Signal 3: MSD1 TIC, MS File

#	R.T.	Type	Height	Height%	Width	Area	Area %
1	3.642	BB	327296.844	100.000	0.079	1.627e+006	100.000



*** End of Report ***