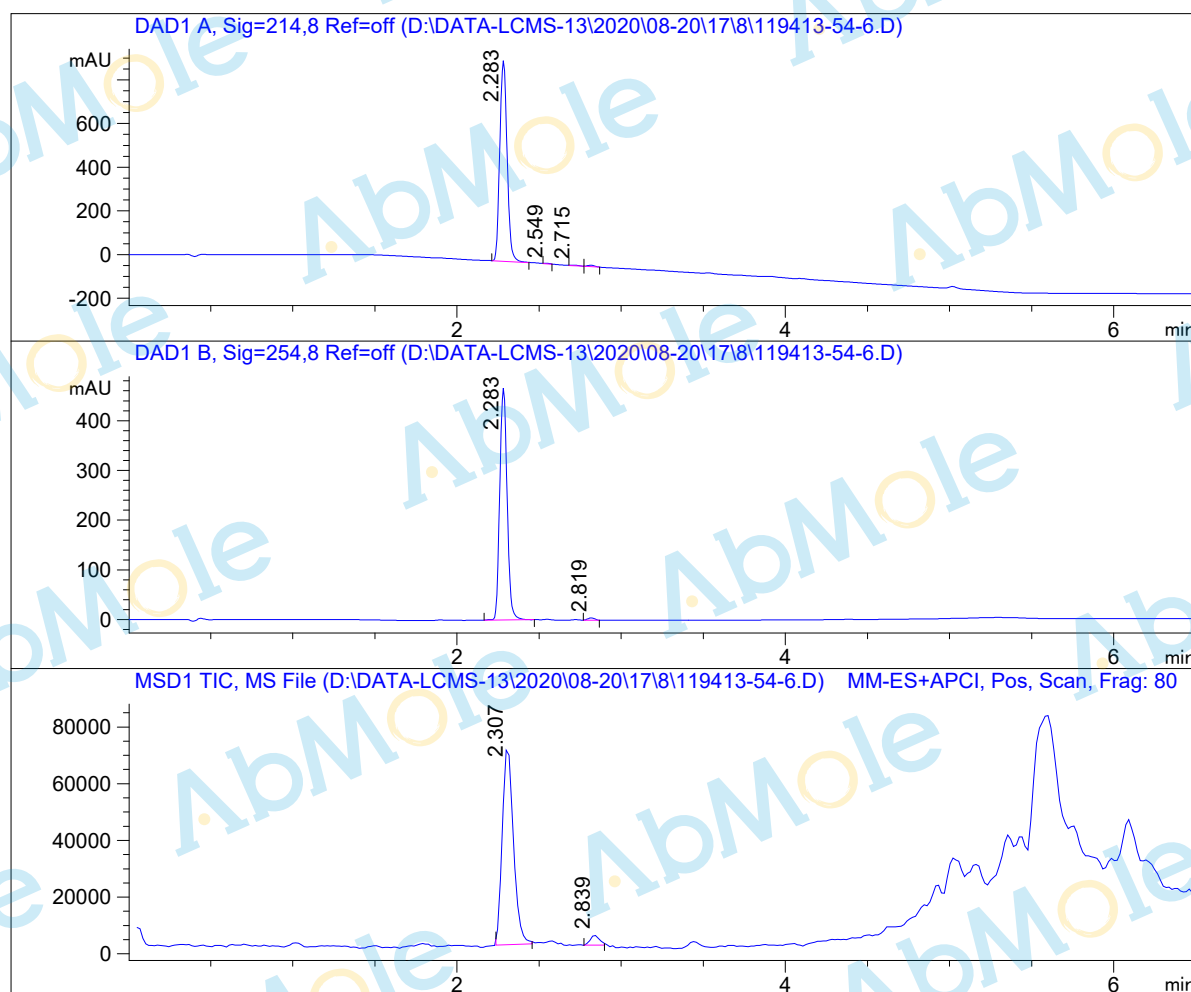


LCMS Report

Sample Name : Topotecan hydrochloride-03
 Data File : D:\DATA-LCMS-13\2020\08-20\17\8\119413-54-6.D
 Injection Date : Mon, 17. Aug. 2020 Inj. Vol. : 2ul
 Acq Operator : LCMS-13 Location : Vial 62
 Acq. Method : D:\data-lcms-13\2020\08-20\17\8\P-05-95.M
 Method Info. : column:Xbridge C18 5um 4.6*50mm ;mobile phase:B (ACN)
 A(0.02%NH4Ac); gradient(B%)!as Acq.Method above



Integration Results

Signal 1: DAD1 A, Sig=214,8 Ref=off

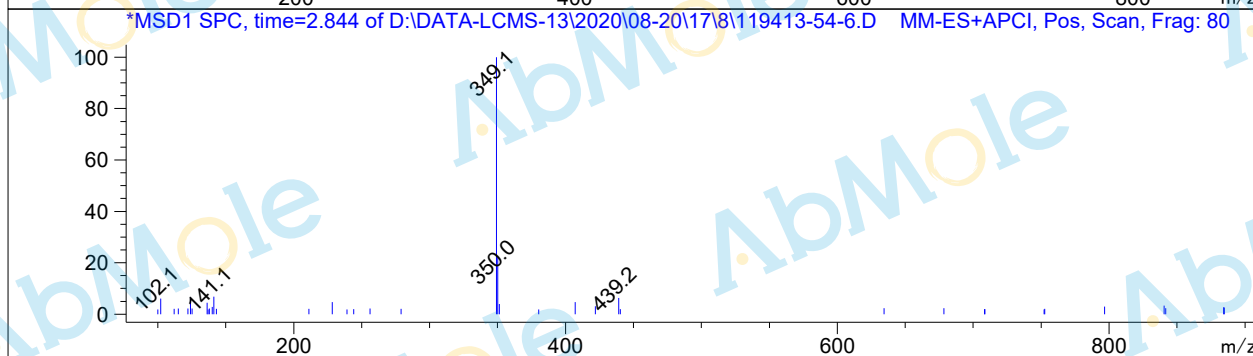
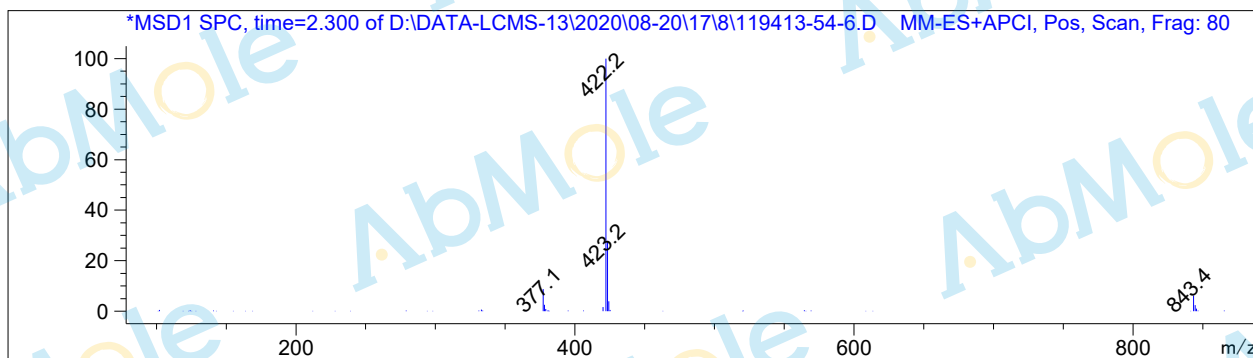
#	R.T.	Type	Height	Height%	Width	Area	Area %
1	2.283	MM	922.585	98.684	0.052	2854.142	98.721
2	2.549	MM	2.543	0.272	0.037	5.585	0.193
3	2.715	BV	2.624	0.281	0.055	9.156	0.317
4	2.816	MF	7.138	0.764	0.052	22.230	0.769

Signal 2: DAD1 B, Sig=254,8 Ref=off

#	R.T.	Type	Height	Height%	Width	Area	Area %
1	2.283	MM	468.255	99.035	0.052	1450.588	99.109
2	2.819	MM	4.562	0.965	0.048	13.039	0.891

Signal 3: MSD1 TIC, MS File

#	R.T.	Type	Height	Height%	Width	Area	Area %
1	2.307	BB	70345.297	95.265	0.076	330004.875	95.893
2	2.839	MM	3496.065	4.735	0.067	14132.267	4.107



*** End of Report ***