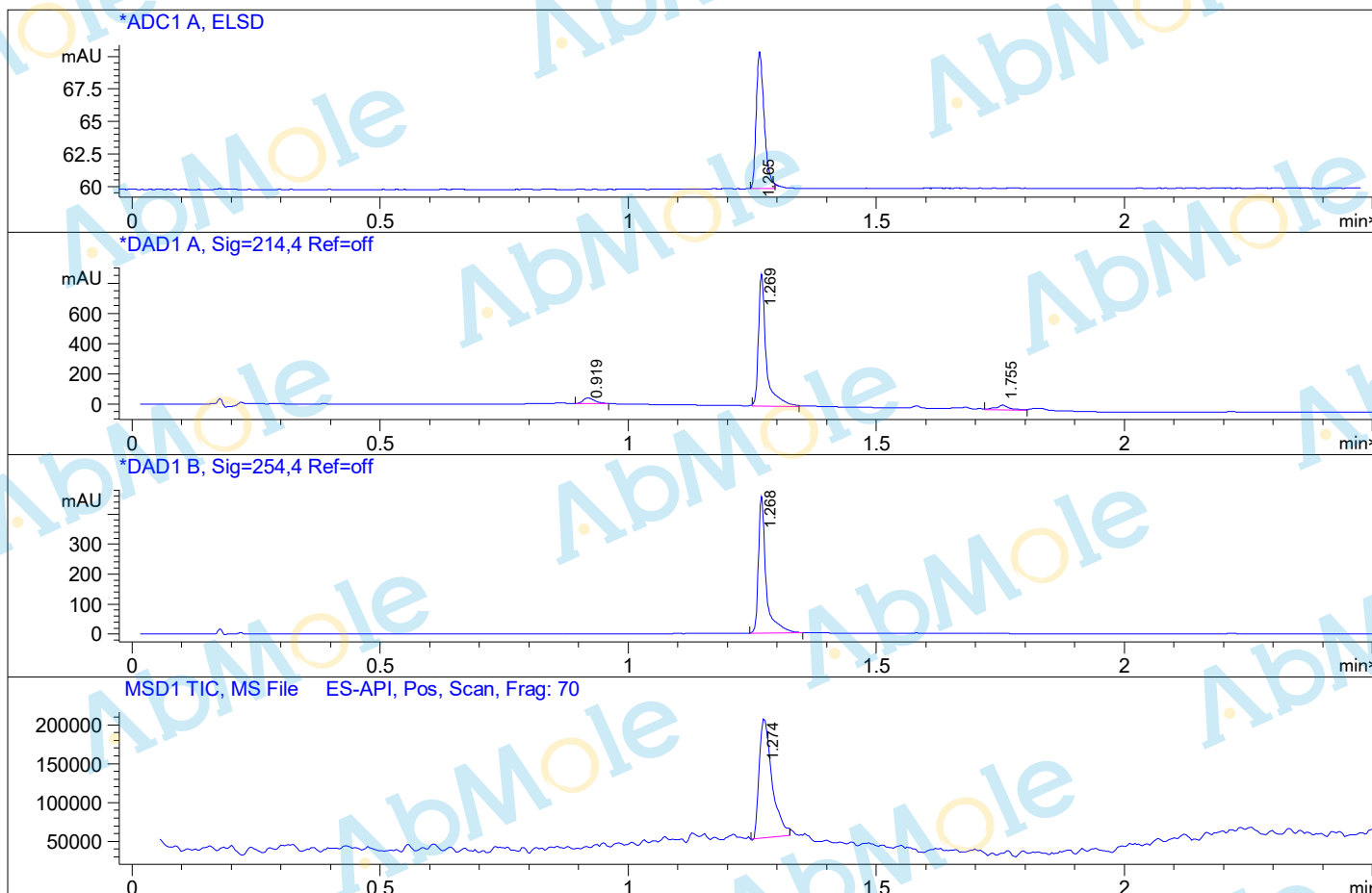


LC/MS Report

File D:\DATA\PRO2775-LCMS
 Injection Date : 24 Nov 18 12:39 pm +0800 Tgt Mass (EZ) :
 Sample Name : Thiazovivin-02-LCMS Location : P2-A-08
 Acq. Operator : LCMS Inj : 1
 Spec. Reported : MS Integration Inj Volume : 2 ul
 Acq. Method : D:\METHODS\1-POS-3MIN.M
 Analysis Method : D:\METHODS\1-POS-3MIN.M
 Sample Info : *** No target masses specified ***
 Method Info : Mobile Phase: A: water(0.01%TFA) B: ACN(0.01%TFA)
 Gradient: 5%-95% B in 1.2min
 Flow Rate: 2.2 ml/min
 Column: Poroshell 120 EC-C18, 4.6*30mm, 2.7um
 Oven Temperature: 50 C
 Mass Range: 110-1500



Integration Results for ADC1 A, ELSD

RetTim	Width	Area	Height	Area%
1.26	0.02	11.61	10.48	100.00

Integration Results for DAD1 A, Sig=214,4 Ref=off

RetTim	Width	Area	Height	Area%
0.92	0.03	65.95	38.87	0.41
1.27	0.02	1951.78	1863.82	99.20
1.75	0.03	64.13	32.28	0.39

Integration Results for DAD1 B, Sig=254,4 Ref=off

RetTim	Width	Area	Height	Area%
1.27	0.02	493.35	457.84	100.00

Ret. Time: 1.27

<<<< POSITIVE SPECTRA >>>>

