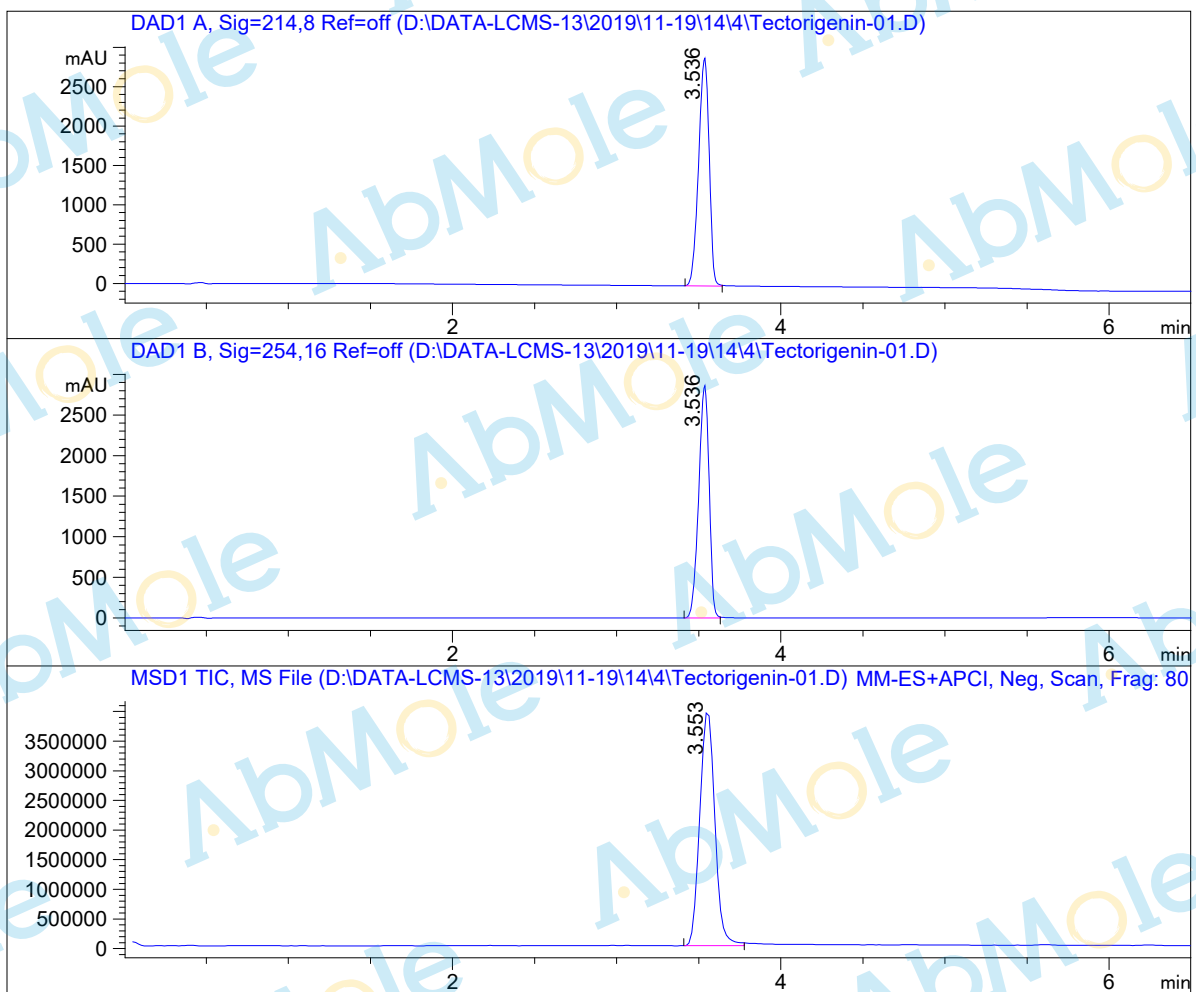


# LC - MS Report

Sample Name : Tectorigenin-01  
Data File : D:\DATA-LCMS-13\2019\11-19\14\4\Tectorigenin-01.D  
Injection Date : Thu, 14. Nov. 2019 Inj. Vol. : 5ul  
Acq Operator : LCMS-13 Location : Vial 87  
Acq. Method : D:\data-lcms-13\2019\11-19\14\4\N-5-60-C2.M  
Method Info. : column:C18;column size:4.6\*50mm ;mobile phase:B (ACN)  
A(0.02%NH4Ac); gradient(B%)!as Acq.Method above



## Integration Results

Signal 1: DAD1 A, Sig=214,8 Ref=off

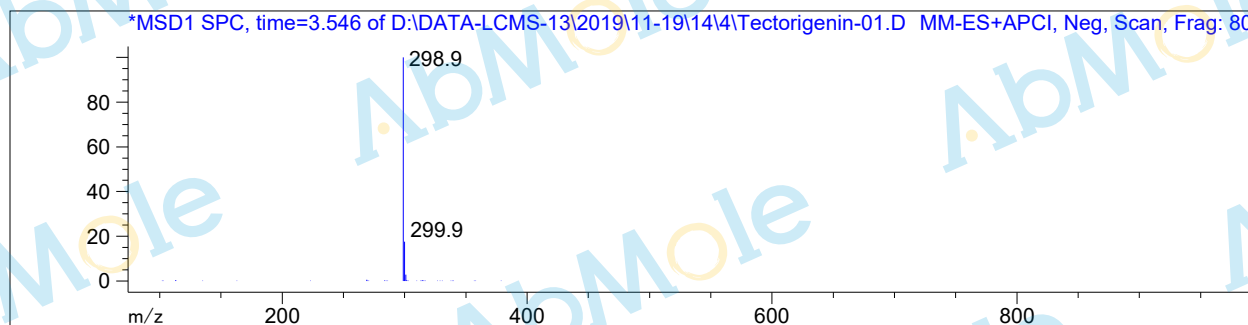
#	R.T.	Type	Height	Height%	Width	Area	Area %
1	3.536	MF	2906.540	100.000	0.074	12974.695	100.000

Signal 2: DAD1 B, Sig=254,16 Ref=off

#	R.T.	Type	Height	Height%	Width	Area	Area %
1	3.536	MF	2877.086	100.000	0.073	12650.677	100.000

Signal 3: MSD1 TIC, MS File

#	R.T.	Type	Height	Height%	Width	Area	Area %
1	3.553	MM	4.004e+006	100.000	0.105	2.534e+007	100.000



\*\*\* End of Report \*\*\*