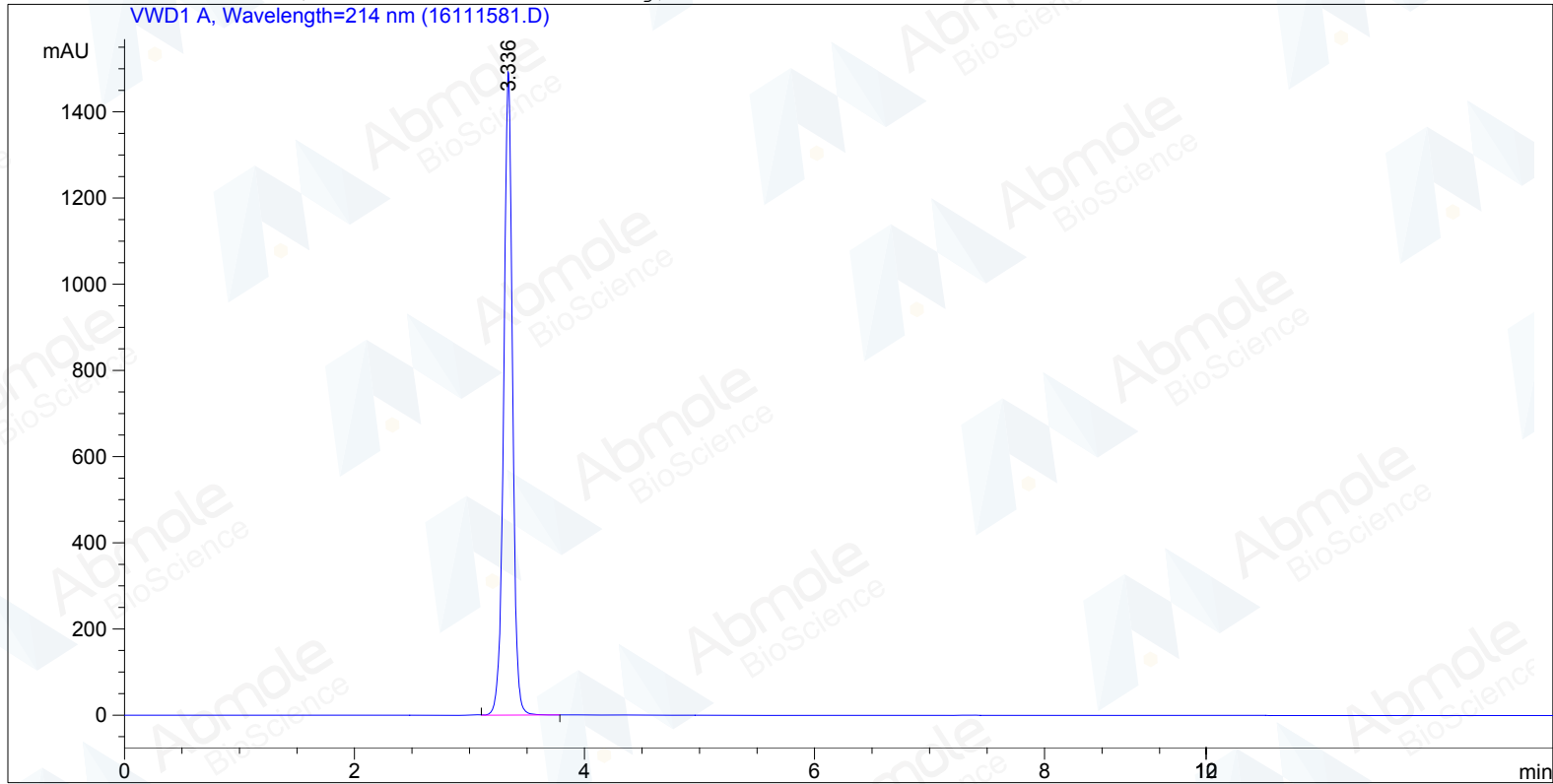


```

=====
Injection Date   : 2/10/2017 2:05:15 PM
Sample Name     : Tadalafil-01                Location   : Vial 1
Acq. Operator   : LC
Acq. Instrument : Instrument 1                Inj Volume: 2 µl
Method          : C:\HPCHEM\1\METHODS\DEF_LC1.M
Last changed    : 2/10/2017 1:44:38 PM by LC
                  (modified after loading)
=====

```



```

=====
Area Percent Report
=====

```

```

Sorted By       : Signal
Multiplier      : 1.0000
Dilution        : 1.0000
Use Multiplier & Dilution Factor with ISTDs

```

Signal 1: VWD1 A, Wavelength=214 nm

| Peak # | RetTime [min] | Type | Width [min] | Area mAU | Area *s | Height [mAU] | Area % |
|--------|---------------|------|-------------|------------|------------|--------------|----------|
| 1 | 3.336 | VB | 0.0811 | 7975.03613 | 1495.55652 | 1495.55652 | 100.0000 |

```
Totals :                7975.03613 1495.55652
```

Results obtained with enhanced integrator!

```

=====
*** End of Report ***
=====

```