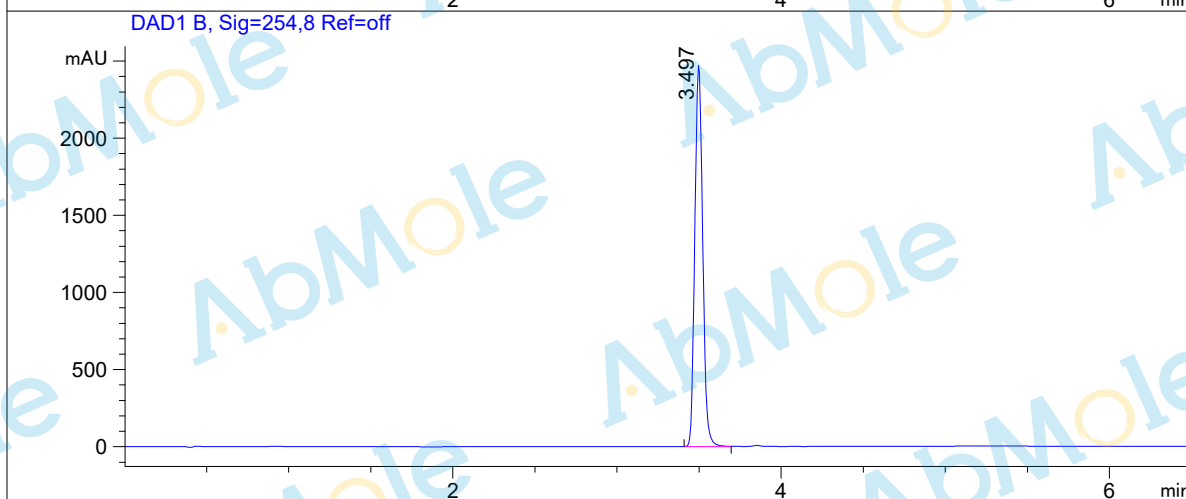
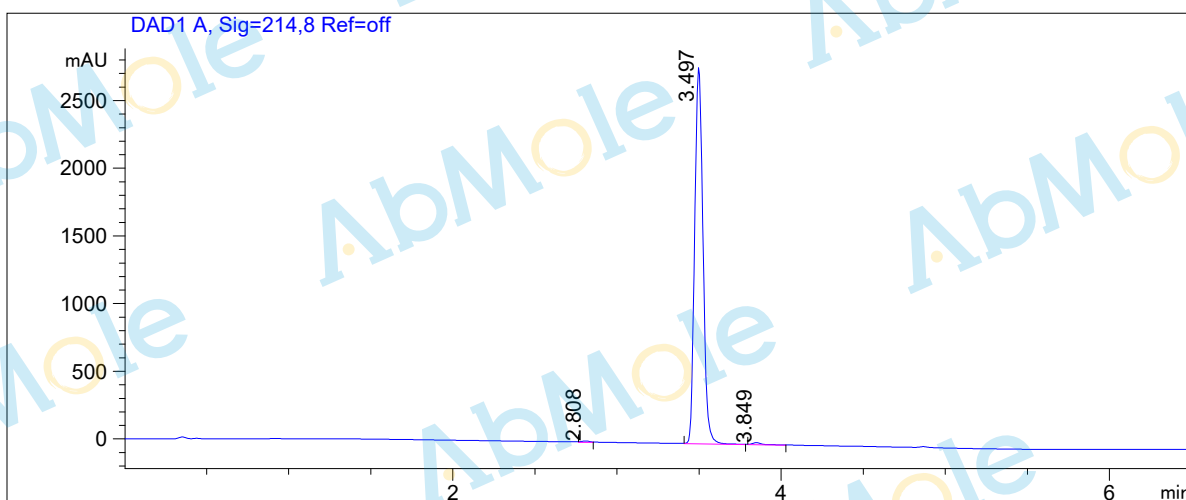


# LC-MS Report

Sample Name : TPI-1-01  
Data File : C:\CHEM32\1\DATA\19\6\TPI-1-01.D  
Injection Date : Wed, 8. Jan. 2020 Inj. Vol. : 3ul  
Acq Operator : LCMS-13 Location : Vial 78  
Acq. Method : C:\Chem32\1\DATA\19\6\P-20-95.M  
Method Info. : column:C18;column size:4.6\*50mm ;mobile phase:B (ACN)  
A(0.02%NH4Ac); gradient(B%)!as Acq.Method above



## Integration Results

Signal 1: DAD1 A, Sig=214,8 Ref=off

#	R.T.	Type	Height	Height%	Width	Area	Area %
1	2.808	MM	9.305	0.331	0.057	31.928	0.323
2	3.497	BB	2787.525	99.164	0.057	9810.202	99.108
3	3.849	BB	14.208	0.505	0.060	56.370	0.569

#	R.T.	Type	Height	Height%	Width	Area	Area %
Signal 2: DAD1 B, Sig=254,8 Ref=off							
#	R.T.	Type	Height	Height%	Width	Area	Area %
1	3.497	BB	2477.571	100.000	0.053	8295.083	100.000

\*\*\* End of Report \*\*\*