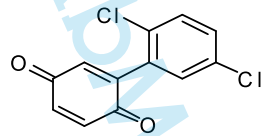


7.417
7.395
7.375
7.369
7.353
7.347
7.261
7.229
7.223
6.924
6.898
6.887
6.882
6.862
6.855
6.800
6.794

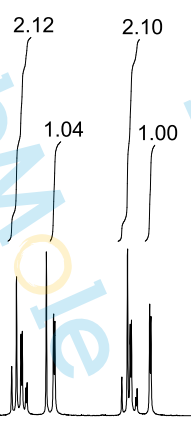
Sample Name: TPI-1-01
Chemical Formula: C₁₂H₆Cl₂O₂
Molecular Weight: 253.08



CAS: 79756-69-7
CDCl₃, 400 MHz

1.556

-0.001



9 8 7 6 5 4 3 2 1 0 PPM