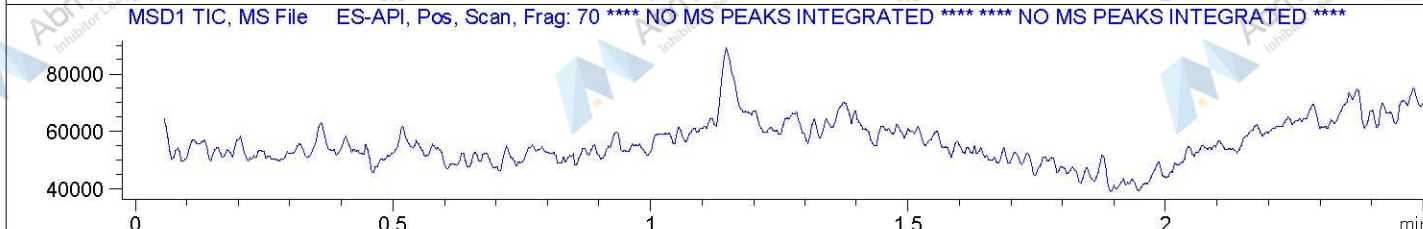
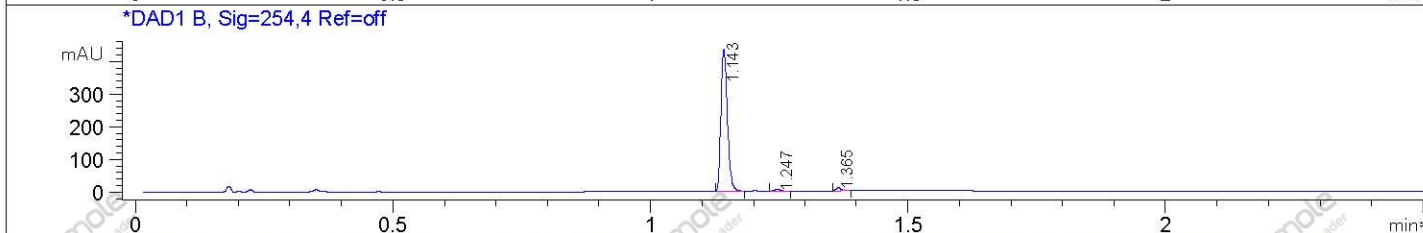
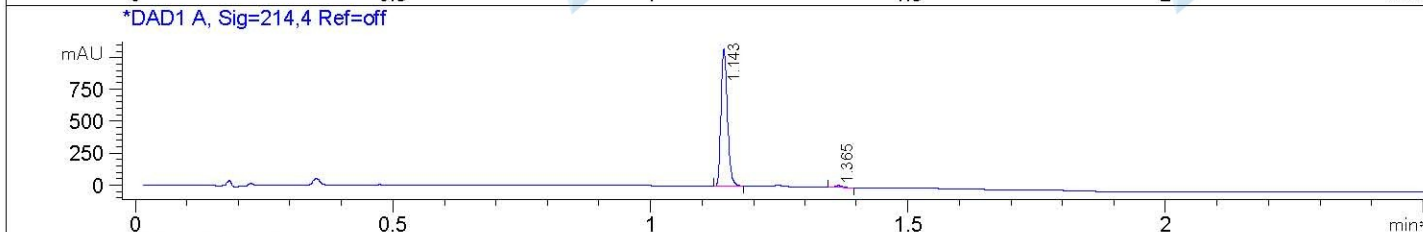
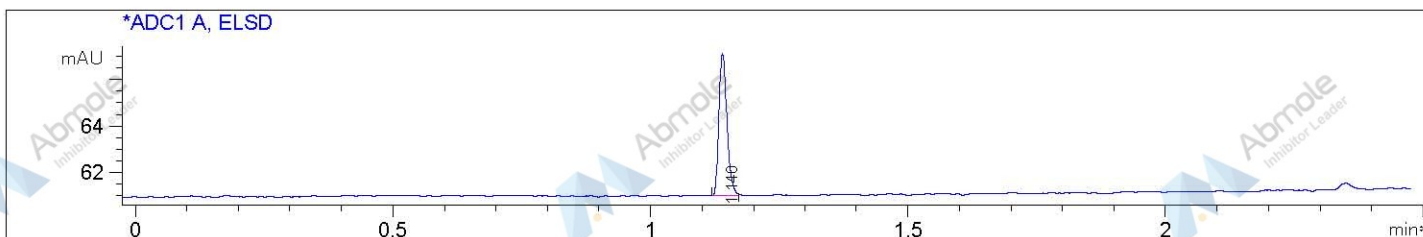


File D:\DATA\PRO2458-LCMS

Injection Date : 26 Nov 14 2:00 pm +0800 Tgt Mass (EZX) :
 Sample Name : TG100-LCMS Location : P1-E-01
 Acq. Operator : LCMS Inj : 1
 Spec. Reported : MS Integration Inj Volume : 2 ul
 Acq. Method : D:\METHODS\1-POS-3MIN.M
 Analysis Method : D:\METHODS\1-POS-3MIN.M
 Sample Info : *** No target masses specified ***
 Method Info : Mobile Phase: A: water(0.01%TFA) B: ACN(0.01%TFA)
 Gradient: 5%-95% B in 1.2min
 Flow Rate: 2.2 ml/min
 Column: Poroshell 120 EC-C18,4.6*30mm,2.7um
 Oven Temperature: 50 C
 Mass Range: 110-1500



Integration Results for ADC1 A, ELSD

RetTim	Width	Area	Height	Area%
1.14	0.02	6.56	6.13	100.00

Integration Results for DAD1 A, Sig=214,4 Ref=off

RetTim	Width	Area	Height	Area%
1.14	0.01	937.07	1052.88	98.66
1.37	0.01	12.76	16.32	1.34

Integration Results for DAD1 B, Sig=254,4 Ref=off

RetTim	Width	Area	Height	Area%
1.14	0.01	381.84	439.64	97.22
1.25	0.01	4.57	5.63	1.16
1.37	0.01	6.34	8.61	1.61