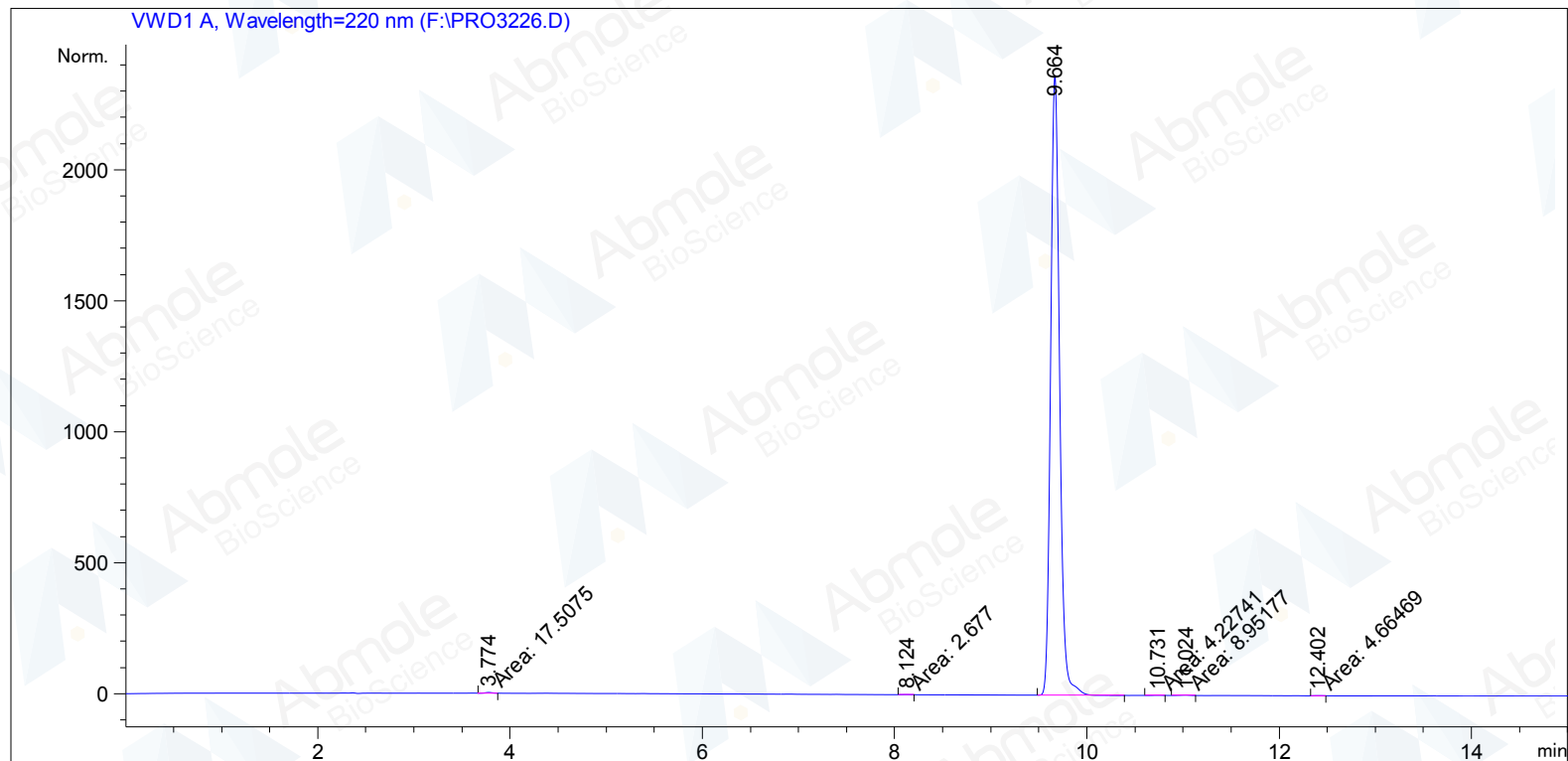


```

=====
Acq. Operator   : System                      Seq. Line :    2
Acq. Instrument : LC1260                      Location  : Vial 21
Injection Date  : 6/27/2016 7:23:19 AM      Inj       :    1
                                                Inj Volume: 0 µl
Different Inj Volume from Sequence !      Actual Inj Volume : 2 µl
Acq. Method     : E:\DATA\Data\20160625\20130913-01 2016-06-27 06-56-56\60-90 AC
                                                15MIN.M
Last changed    : 6/27/2016 6:56:56 AM by System
Analysis Method : D:\PUBLIC\20160621\20160127 2016-06-21 15-10-53\WL-20160621-4.D\DA.M (60-90
                                                6MIN.M)
Last changed    : 6/27/2016 12:57:15 PM
                                                (modified after loading)
=====
  
```



=====
 Area Percent Report
 =====

```

Sorted By      :      Signal
Multiplier     :      1.0000
Dilution      :      1.0000
Use Multiplier & Dilution Factor with ISTDs
  
```

Signal 1: VWD1 A, Wavelength=220 nm

Peak #	RetTime [min]	Type	Width [min]	Area [mAU*s]	Height [mAU]	Area %
1	3.774	MM	0.0924	17.50748	3.15892	0.1140
2	8.124	MM	0.0963	2.67700	4.63506e-1	0.0174

Sample Name: Suvorexant-01

Peak #	RetTime [min]	Type	Width [min]	Area [mAU*s]	Height [mAU]	Area %
3	9.664	VB	0.0996	1.53220e4	2365.20337	99.7524
4	10.731	MM	0.1008	4.22741	6.99298e-1	0.0275
5	11.024	MM	0.1245	8.95177	1.19856	0.0583
6	12.402	MM	0.1132	4.66469	6.86761e-1	0.0304

Totals : 1.53600e4 2371.41042

*** End of Report ***