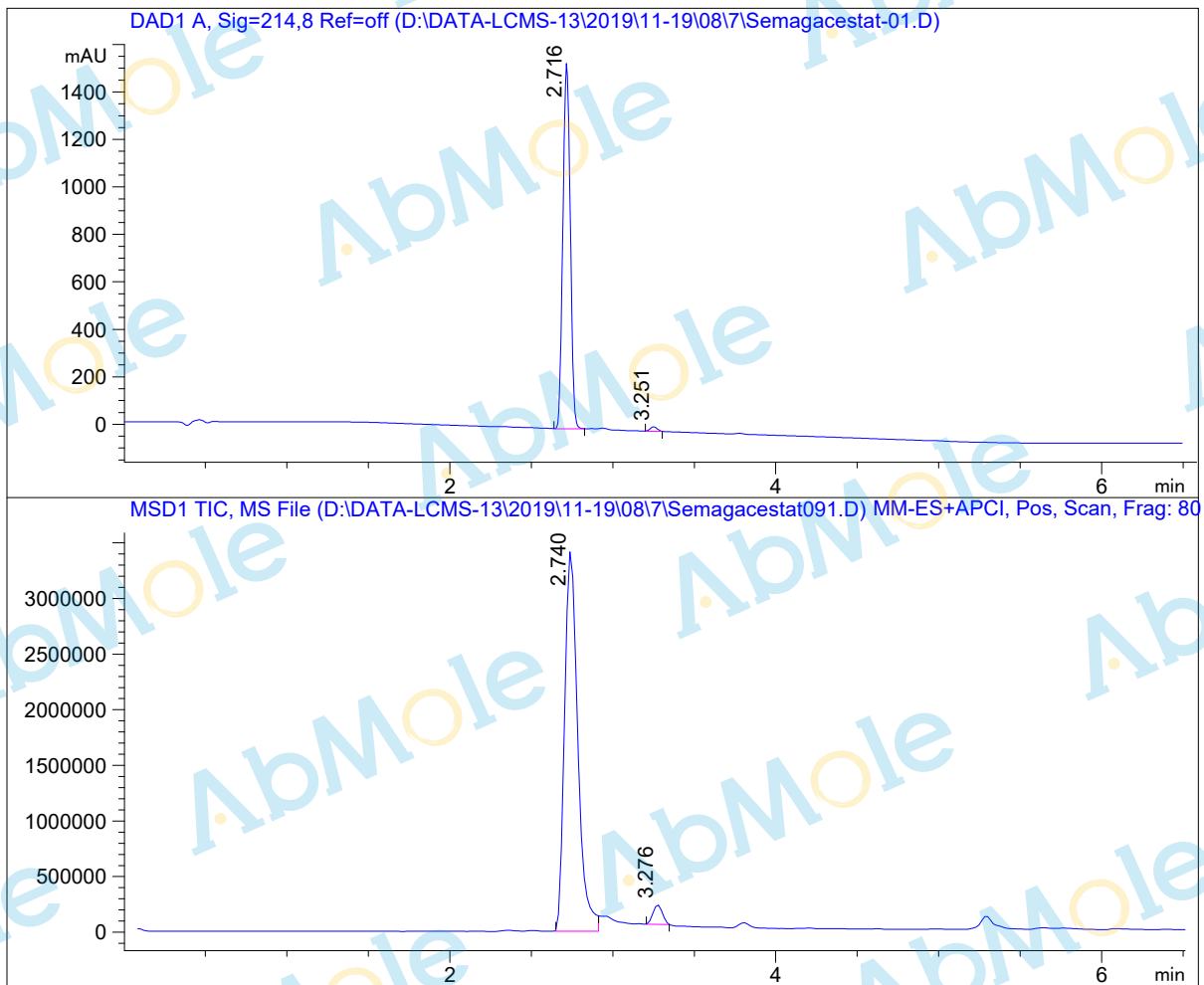


LC-MS Report

Sample Name : Semagacestat-01
Data File : D:\DATA-LCMS-13\2019\11-19\08\7\Semagacestat-01.D
Injection Date : Sat, 9. Nov. 2019 Inj. Vol. : 5ul
Acq Operator : LCMS-13 Location : Vial 19
Acq. Method : D:\data-lcms-13\2019\11-19\08\7\P-05-95-C2.M
Method Info. : column:C18;column size:4.6*50mm ;mobile phase:B (ACN)
A(0.02%NH4Ac); gradient(B%)!as Acq.Method above



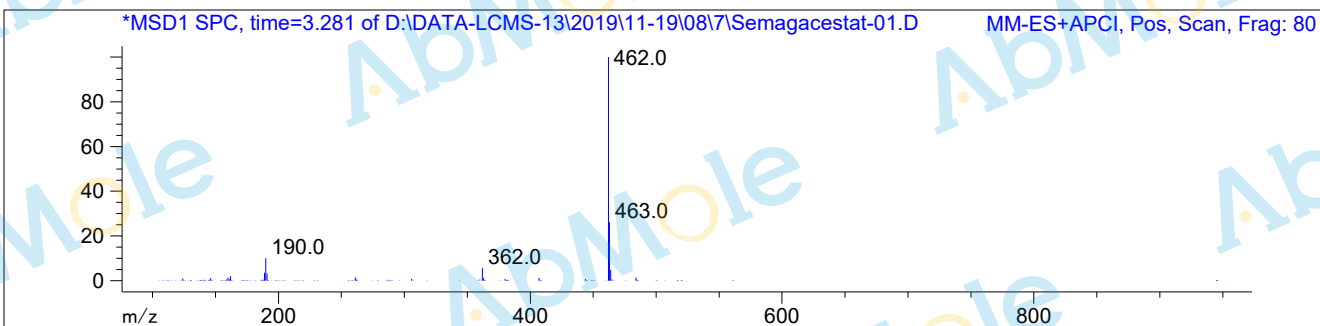
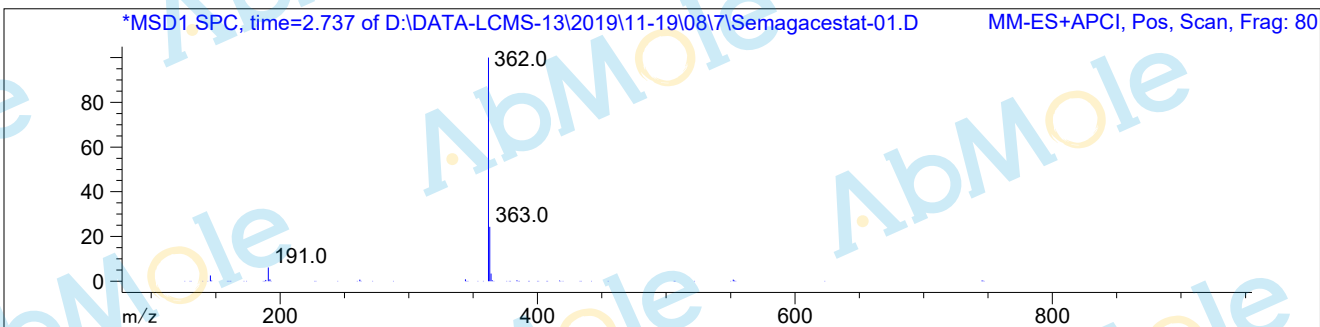
Integration Results

Signal 1: DAD1 A, Sig=214,8 Ref=off

#	R.T.	Type	Height	Height%	Width	Area	Area %
1	2.716	MM	1547.996	98.835	0.052	4855.372	98.868
2	3.251	MM	18.243	1.165	0.051	55.577	1.132

Signal 2: MSD1 TIC, MS File

#	R.T.	Type	Height	Height%	Width	Area	Area %
1	2.740	MM	3.459e+006	95.128	0.093	1.931e+007	96.504
2	3.276	MM	177153.844	4.872	0.066	699357.375	3.496



*** End of Report ***