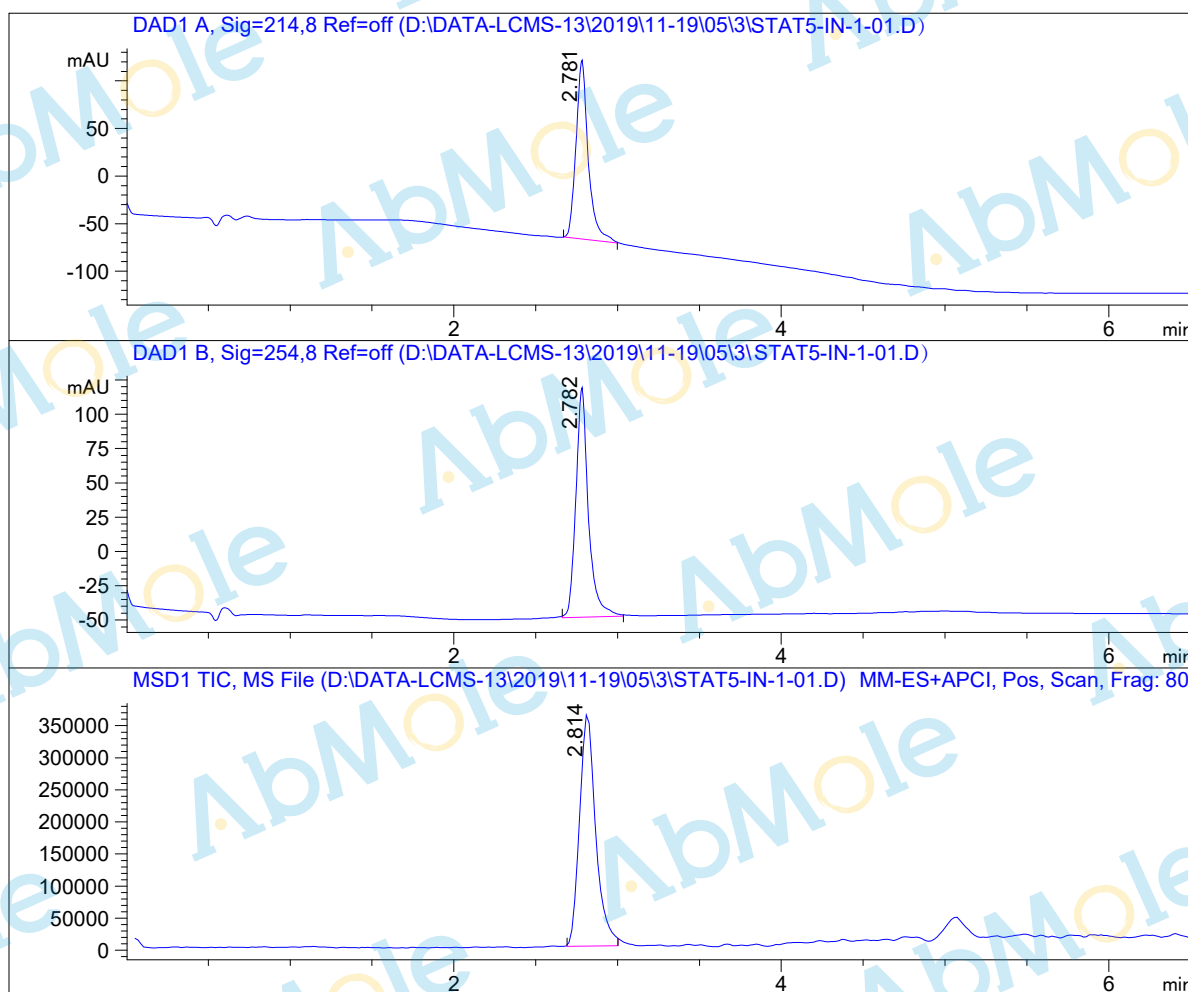


LC-MS Report

Sample Name : STAT5-IN-1-01
Data File : D:\DATA-LCMS-13\2019\11-19\05\3\STAT5-IN-1-01.D
Injection Date : Tue, 5. Nov. 2019 Inj. Vol. : 2ul
Acq Operator : LCMS-13 Location : Vial 11
Acq. Method : D:\data-lcms-13\2019\11-19\05\3\P-05-95.M
Method Info. : column:C18;column size:4.6*50mm ;mobile phase:B (ACN)
A(0.02%NH4Ac); gradient(B%)!as Acq.Method above



Integration Results

Signal 1: DAD1 A, Sig=214,8 Ref=off

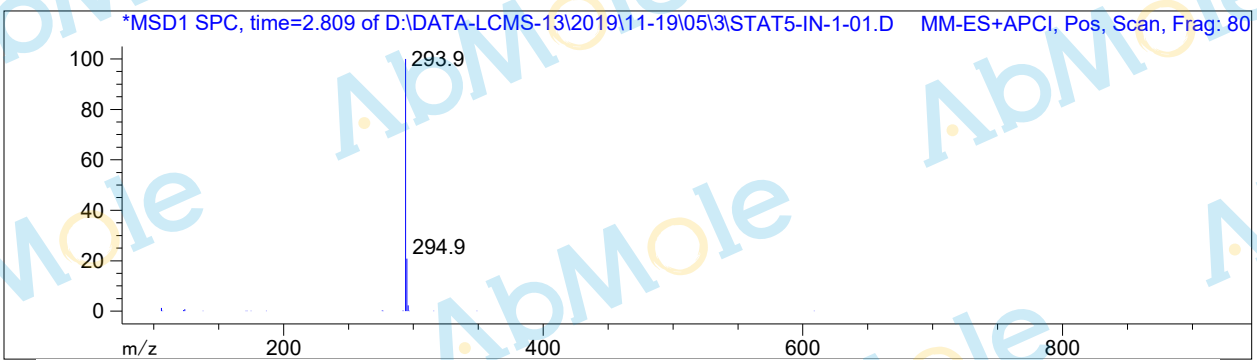
#	R.T.	Type	Height	Height%	Width	Area	Area %
1	2.781	MM	188.601	100.000	0.086	977.289	100.000

Signal 2: DAD1 B, Sig=254,8 Ref=off

#	R.T.	Type	Height	Height%	Width	Area	Area %
1	2.782	BB	167.567	100.000	0.078	887.724	100.000

Signal 3: MSD1 TIC, MS File

#	R.T.	Type	Height	Height%	Width	Area	Area %
1	2.814	BB	363045.719	100.000	0.106	2.483e+006	100.000



*** End of Report ***