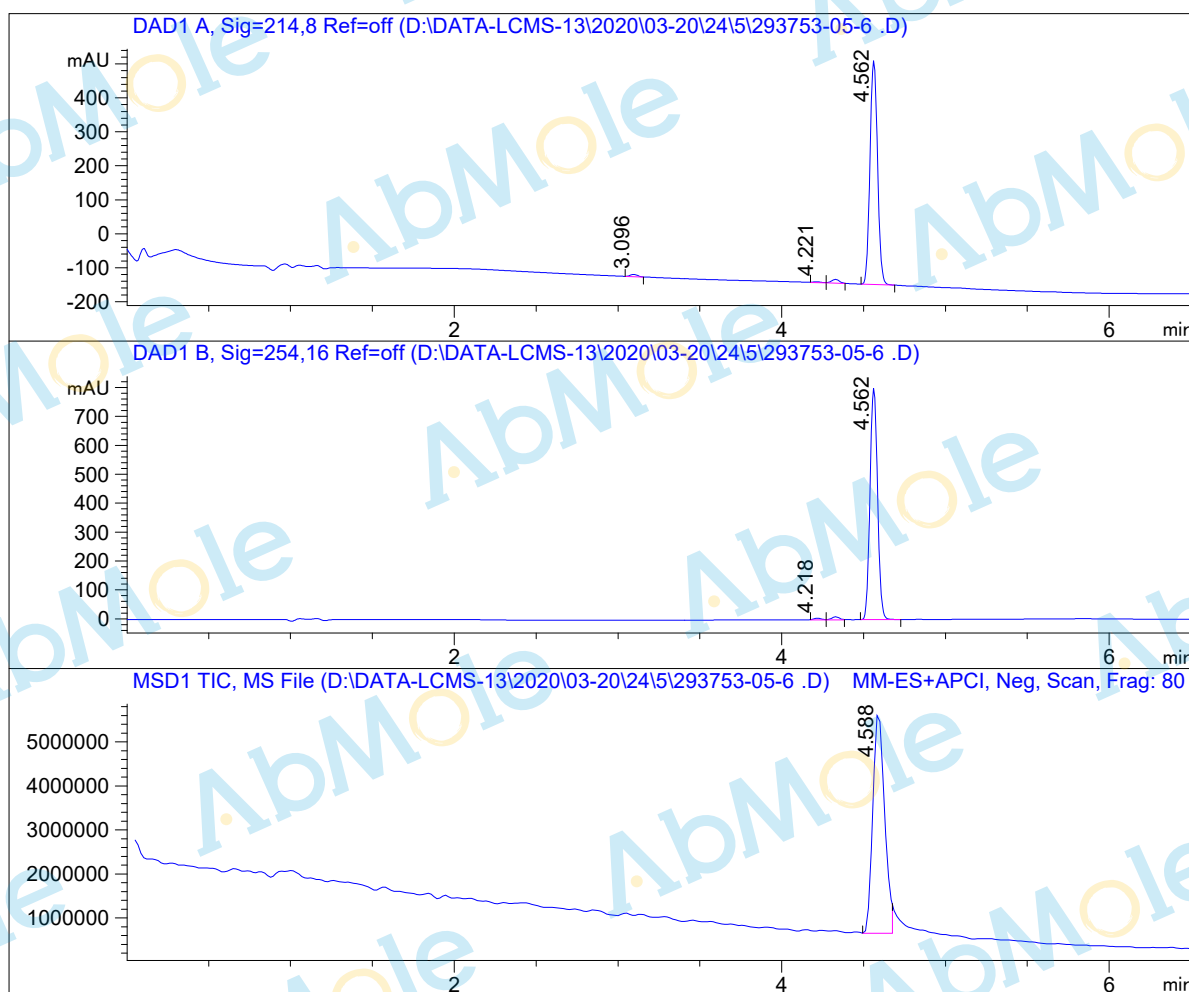


LCMS Report

Sample Name : SR3335-01
 Data File : D:\DATA-LCMS-13\2020\03-20\24\5\293753-05-6.D
 Injection Date : Tue, 24. Mar. 2020 Inj. Vol. : 2ul
 Acq Operator : LCMS-13 Location : Vial 32
 Acq. Method : D:\data-lcms-13\2020\03-20\24\5\N-10-95-C2.M
 Method Info. : column:Ecclipse XDB-C18 5um 4.6*150mm ;mobile phase:B(ACN) A(0.02%NH4AC); gradient(B%)!as Acq.Method above



Integration Results

Signal 1: DAD1 A, Sig=214,8 Ref=off

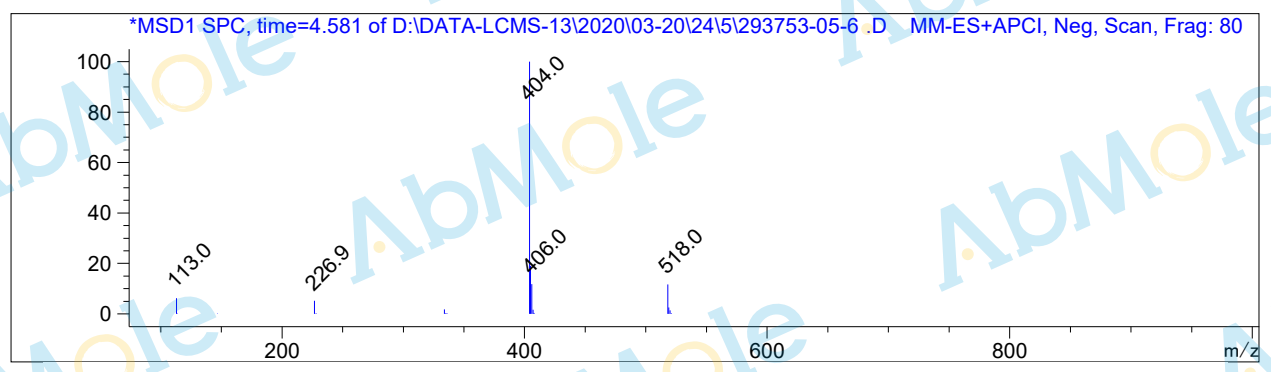
#	R.T.	Type	Height	Height%	Width	Area	Area %
1	3.096	FM	6.787	0.995	0.052	21.234	0.978
2	4.221	MF	2.592	0.380	0.060	9.306	0.429
3	4.328	FM	11.247	1.648	0.055	36.920	1.701
4	4.562	MM	661.745	96.977	0.053	2102.961	96.892

Signal 2: DAD1 B, Sig=254,16 Ref=off

#	R.T.	Type	Height	Height%	Width	Area	Area %
1	4.218	FM	5.381	0.659	0.051	16.568	0.636
2	4.328	MF	10.389	1.272	0.054	33.390	1.282
3	4.562	BB	801.128	98.070	0.051	2553.969	98.081

Signal 3: MSD1 TIC, MS File

#	R.T.	Type	Height	Height%	Width	Area	Area %
1	4.588	MF	5.109e+006	100.000	0.082	2.522e+007	100.000



*** End of Report ***