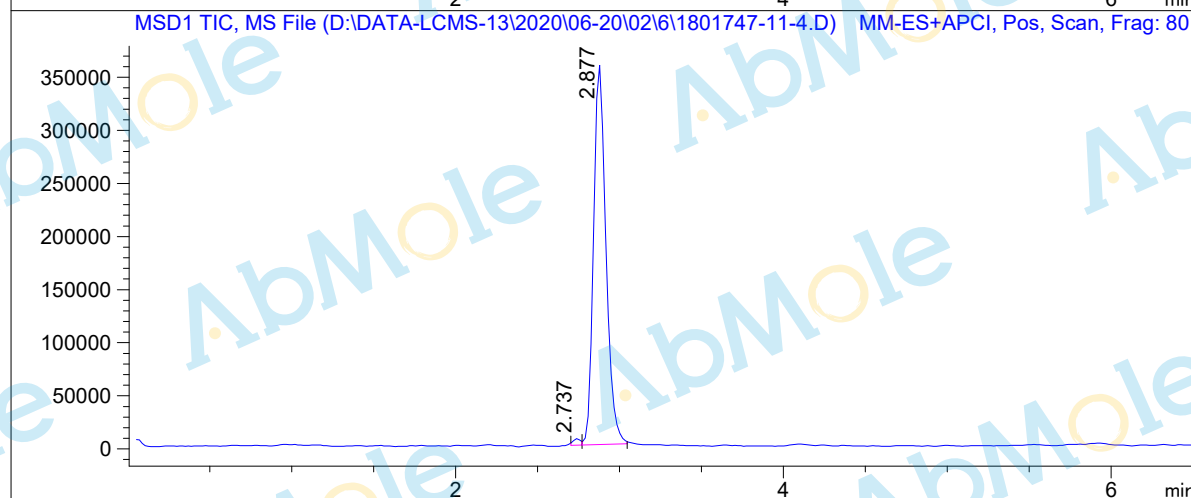
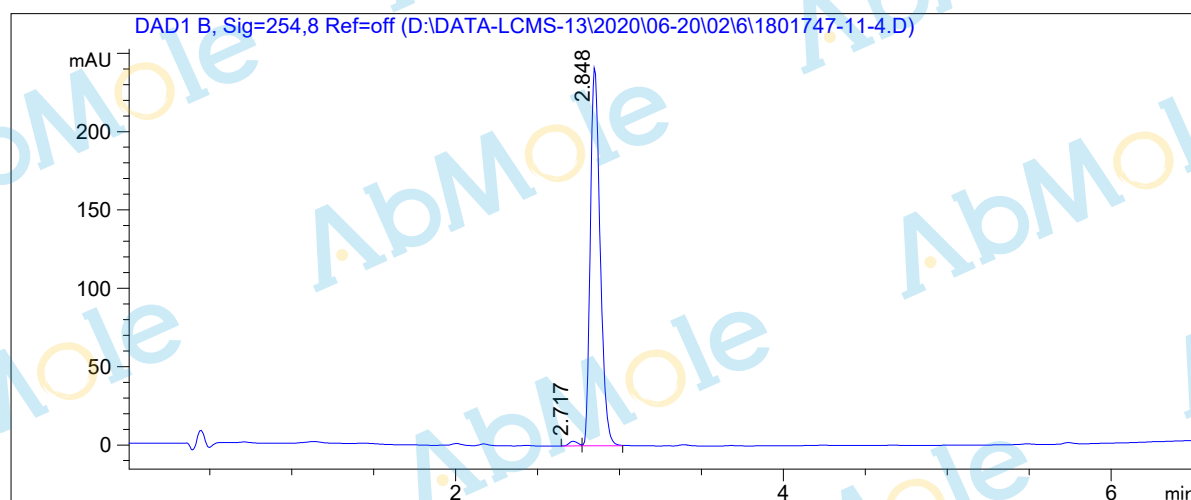


LCMS Report

Sample Name : SHP099 hydrochloride-02
Data File : D:\DATA-LCMS-13\2020\06-20\02\6\1801747-11-4.D
Injection Date : Tue, 2. Jun. 2020 Inj. Vol. : 2ul
Acq Operator : LCMS-13 Location : Vial 51
Acq. Method : D:\data-lcms-13\2020\06-20\02\6\P-10-60-TFA.M
Method Info. : column:Xbridge C18 5um 4.6*50mm ;mobile phase:B (ACN)
A(0.05%TFA) ; gradient(B%)!as Acq.Method above



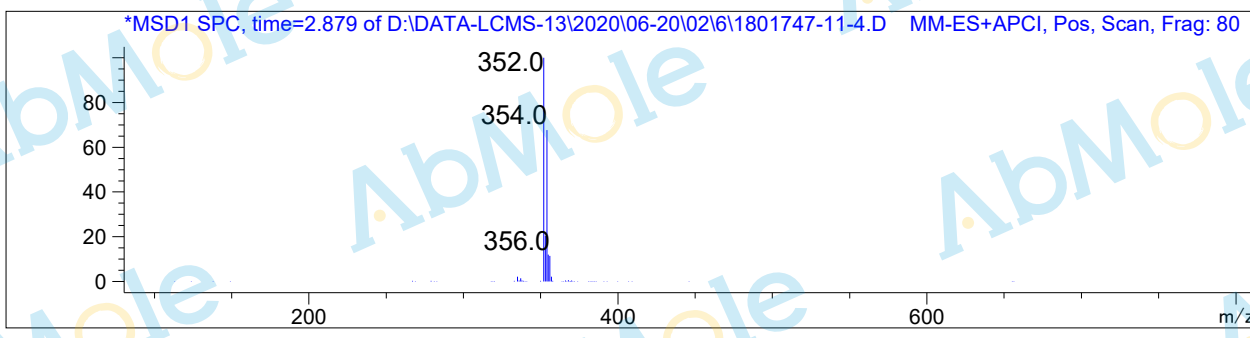
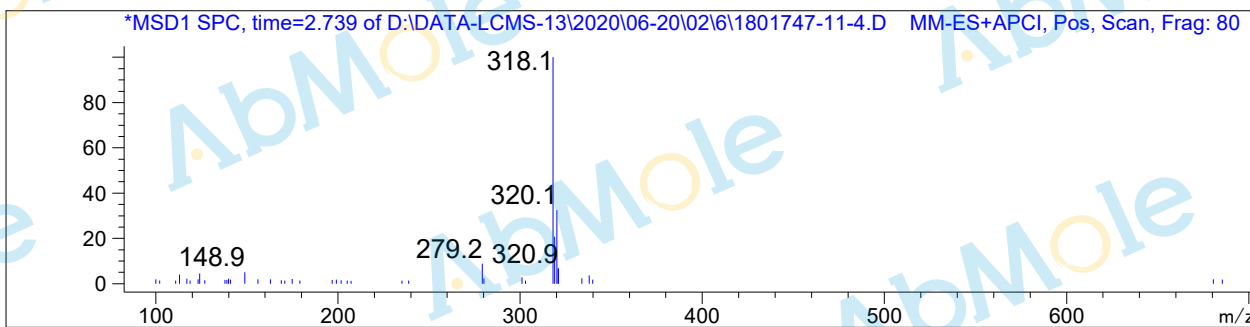
Integration Results

Signal 1: DAD1 B, Sig=254,8 Ref=off

| # | R.T. | Type | Height | Height% | Width | Area | Area % |
|---|-------|------|---------|---------|-------|----------|--------|
| 1 | 2.717 | BV | 2.984 | 1.220 | 0.058 | 10.854 | 1.067 |
| 2 | 2.848 | VB | 241.649 | 98.780 | 0.065 | 1006.237 | 98.933 |

Signal 2: MSD1 TIC, MS File

| # | R.T. | Type | Height | Height% | Width | Area | Area % |
|---|-------|------|------------|---------|-------|------------|--------|
| 1 | 2.737 | MF | 6263.158 | 1.700 | 0.051 | 18979.559 | 1.000 |
| 2 | 2.877 | FM | 362143.625 | 98.300 | 0.086 | 1.879e+006 | 99.000 |



*** End of Report ***