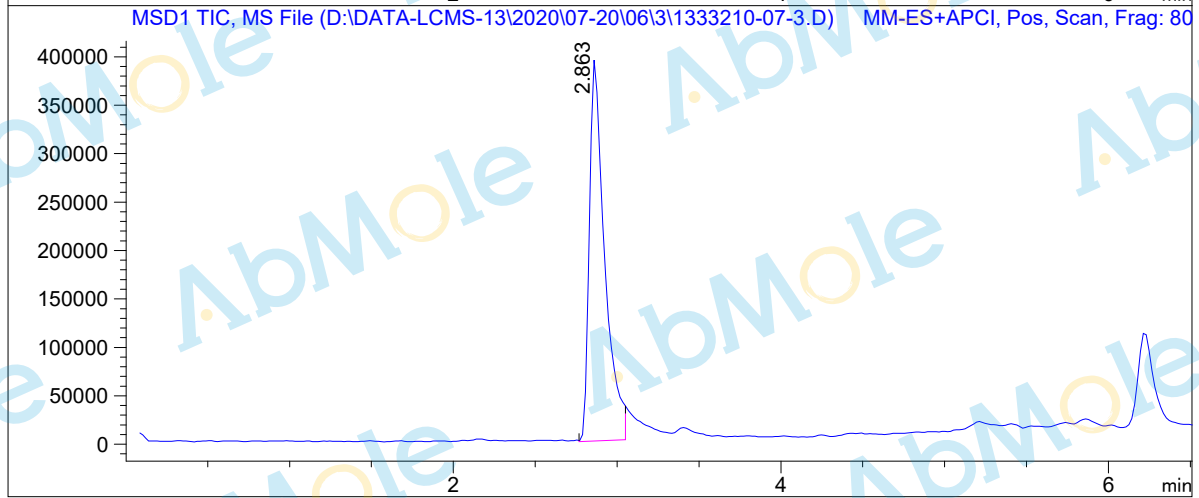
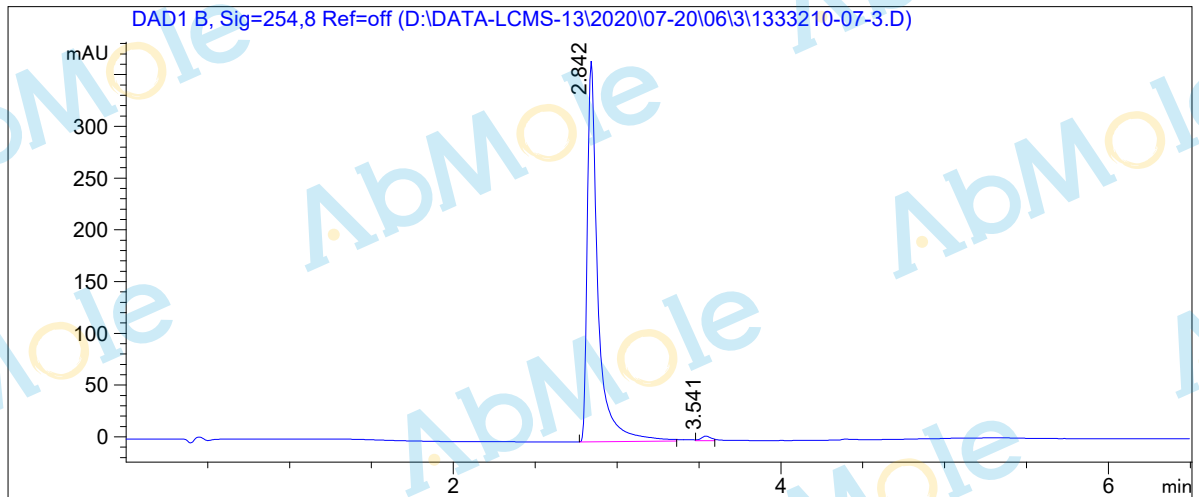


LCMS Report

Sample Name : SAR7334-01
Data File : D:\DATA-LCMS-13\2020\07-20\06\3\1333210-07-3.D
Injection Date : Mon, 6. Jul. 2020 Inj. Vol. : 2ul
Acq Operator : LCMS-13 Location : Vial 42
Acq. Method : D:\data-lcms-13\2020\07-20\06\3\P-05-95-TFA.M
Method Info. : column:Xbridge C18 5um 4.6*50mm ;mobile phase:B (ACN)
A(0.05%TFA) ; gradient(B%)!as Acq.Method above



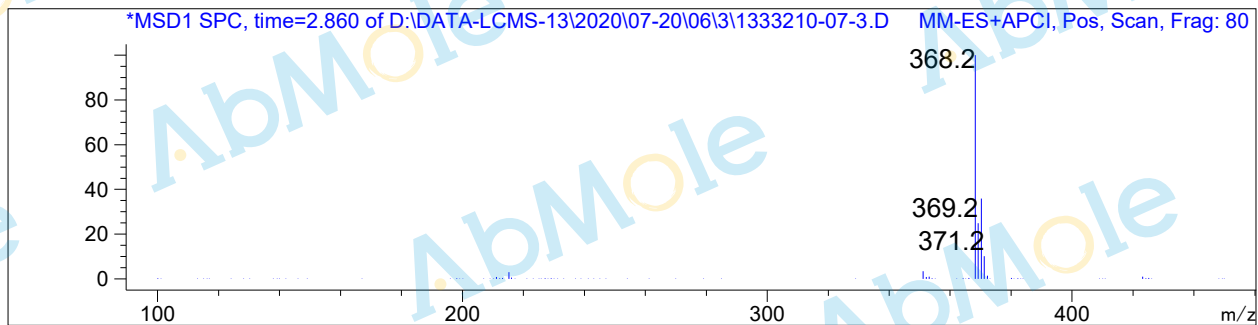
Integration Results

Signal 1: DAD1 B, Sig=254,8 Ref=off

#	R.T.	Type	Height	Height%	Width	Area	Area %
1	2.842	MF	369.262	98.818	0.076	1680.929	98.903
2	3.541	MF	4.417	1.182	0.070	18.652	1.097

Signal 2: MSD1 TIC, MS File

#	R.T.	Type	Height	Height%	Width	Area	Area %
1	2.863	MM	399992.594	100.000	0.107	2.576e+006	100.000



*** End of Report ***