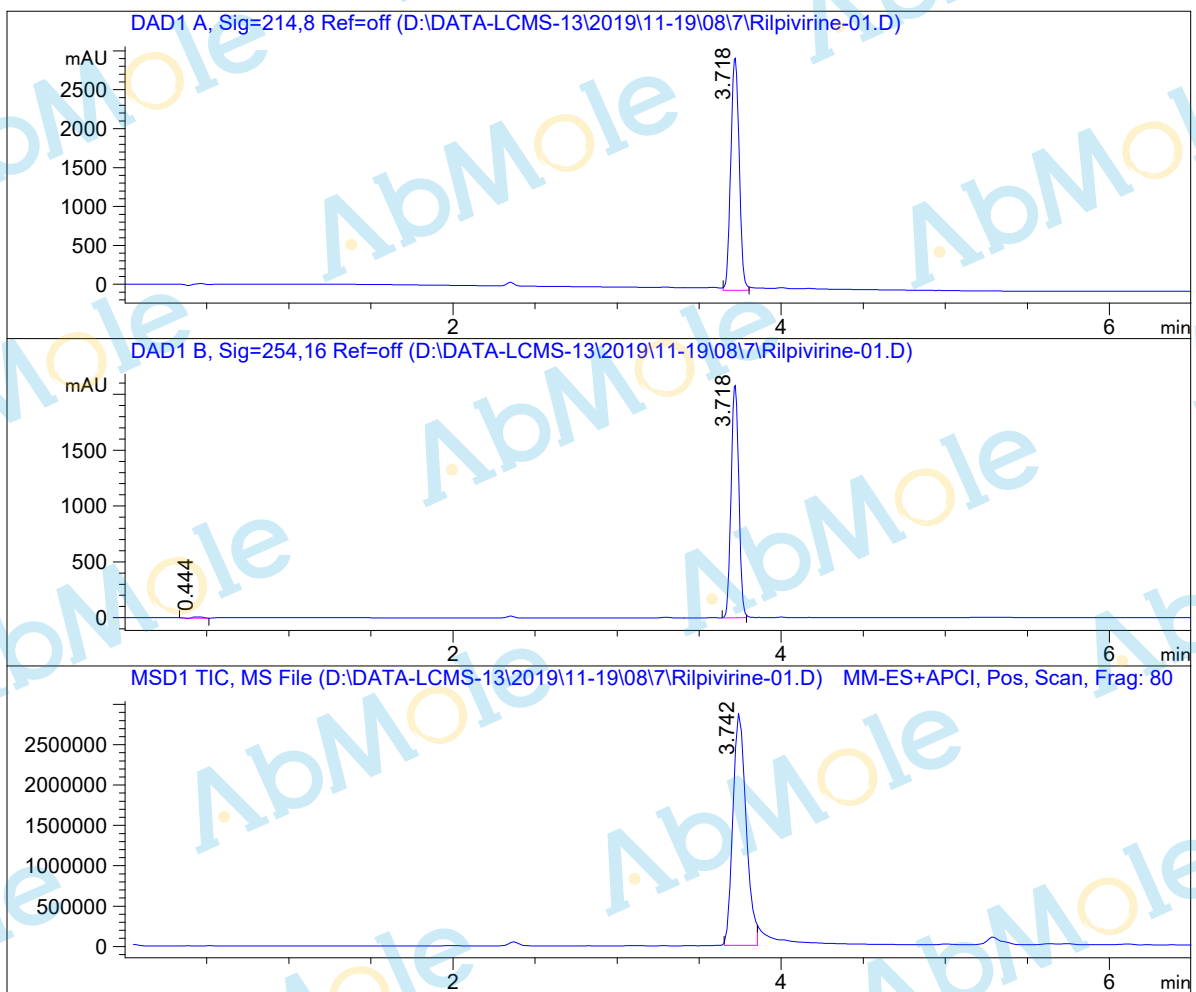


# LC-MS Report

Sample Name : Rilpivirine-01  
Data File : D:\DATA-LCMS-13\2019\11-19\08\7\Rilpivirine-01.D  
Injection Date : Sat, 9. Nov. 2019 Inj. Vol. : 5ul  
Acq Operator : LCMS-13 Location : Vial 23  
Acq. Method : D:\data-lcms-13\2019\11-19\08\7\P-05-95-C2.M  
Method Info. : column:C18;column size:4.6\*50mm ;mobile phase:B (ACN)  
A(0.02%NH4Ac); gradient(B%)!as Acq.Method above



## Integration Results

Signal 1: DAD1 A, Sig=214,8 Ref=off

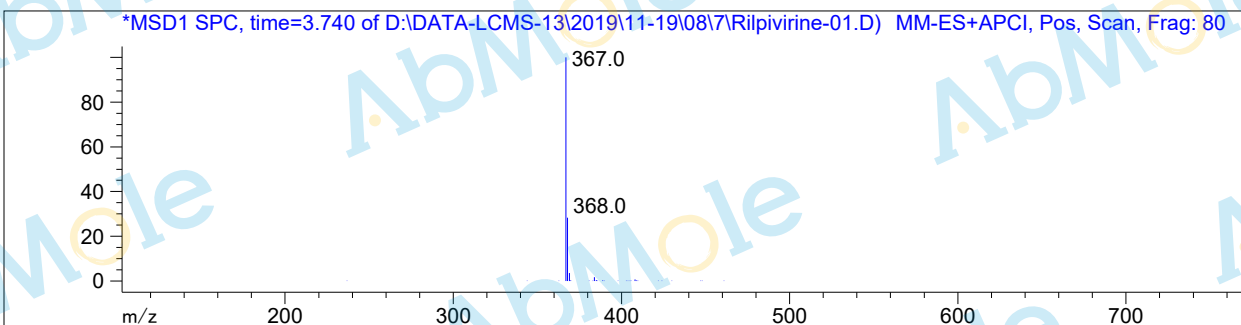
| # | R.T.  | Type | Height   | Height% | Width | Area      | Area %  |
|---|-------|------|----------|---------|-------|-----------|---------|
| 1 | 3.718 | MM   | 3010.148 | 100.000 | 0.059 | 10648.584 | 100.000 |

Signal 2: DAD1 B, Sig=254,16 Ref=off

| # | R.T.  | Type | Height   | Height% | Width | Area     | Area % |
|---|-------|------|----------|---------|-------|----------|--------|
| 1 | 0.444 | BV   | 10.240   | 0.484   | 0.065 | 36.080   | 0.529  |
| 2 | 3.718 | MF   | 2104.042 | 99.516  | 0.054 | 6786.387 | 99.471 |

Signal 3: MSD1 TIC, MS File

| # | R.T.  | Type | Height     | Height% | Width | Area       | Area %  |
|---|-------|------|------------|---------|-------|------------|---------|
| 1 | 3.742 | MM   | 2.914e+006 | 100.000 | 0.093 | 1.619e+007 | 100.000 |



\*\*\* End of Report \*\*\*