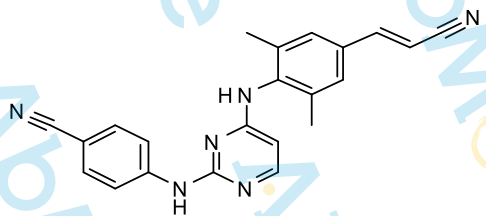


8.024
9.604
8.010
7.748
7.745
8.944
7.728
7.727
7.722
7.719
7.717
7.707
7.688
7.680
7.662
7.646
7.639
7.620
7.521
7.487
7.466
7.456
7.453
7.450
7.448
7.444
7.438
7.430
7.425
6.480
6.439
3.323
2.507
2.503

Sample Name: Rilpivirine-01

Chemical Formula: C₂₂H₁₈N₆

Molecular Weight: 366.42



CAS: 500287-72-9

DMSO-d₆, 400 MHz

