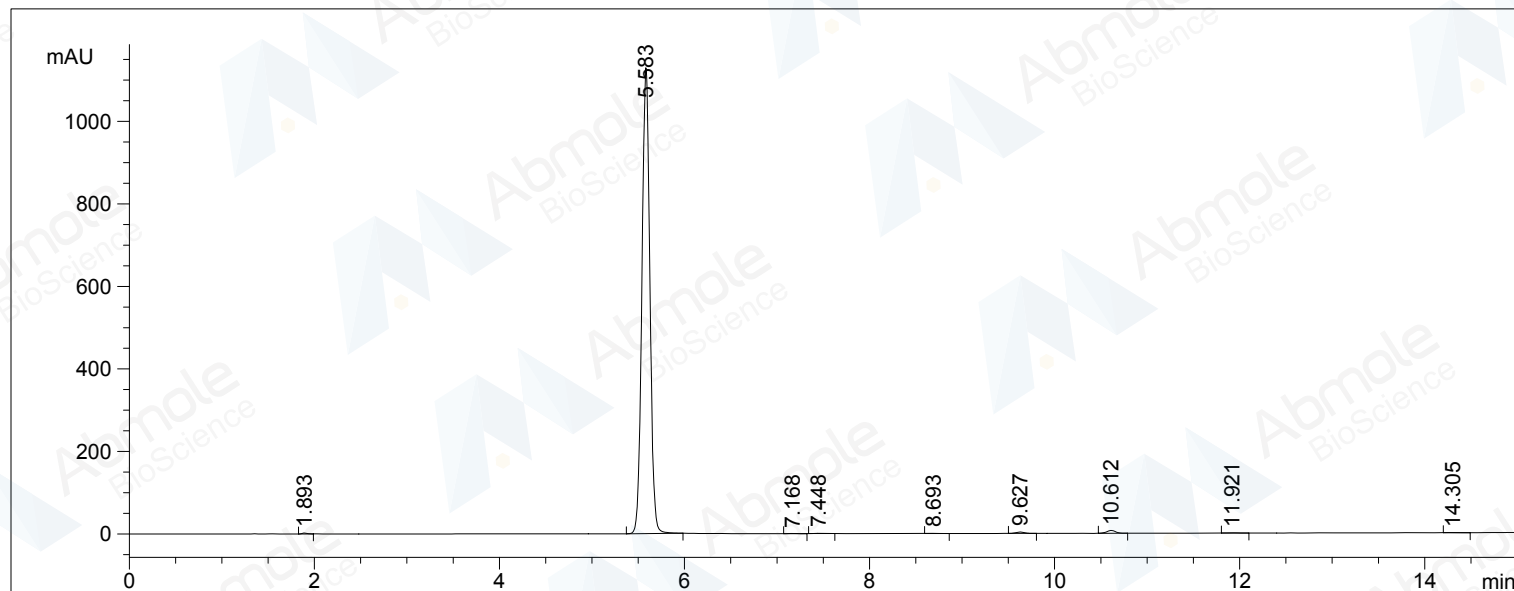


```

=====
Acq. Operator   : AbMole           Seq. Line : 15
Acq. Instrument : Instrument 1      Location  : Vial 33
Injection Date  : 4/29/2017 2:24:35 PM Inj       : 1
                                           Inj Volume : 1 µl
Different Inj Volume from Sequence ! Actual Inj Volume : 0.3 µl
Acq. Method     : D:\ABMOLE32\METHOD\M-A40B60.M
Last changed    : 7/20/2016 4:56:19 PM by yycheng
Analysis Method : D:\ABMOLE\METHOD\WAITING.M
Last changed    : 4/29/2017 2:40:53 PM by FFLIU
                 (modified after loading)
Method Info     : Phenomenex Gemini C18 5µm,150x4.6 mm Column,
                 Mobile phase: A:0.03%TFA in H2O,B:0.03%TFA in ACN
=====

```



=====
Area Percent Report
=====

```

Sorted By      : Signal
Multiplier     : 1.0000
Dilution       : 1.0000
Use Multiplier & Dilution Factor with ISTDs

```

Signal 1: VWD1 A, Wavelength=254 nm

Peak #	RetTime [min]	Type	Width [min]	Area mAU	Area *s	Height [mAU]	Area %
1	1.893	BB	0.0534	7.80164	2.25969	0.1139	0.1139
2	5.583	BB	0.0931	6763.97705	1130.28943	98.7143	98.7143
3	7.168	BB	0.0884	1.83997	3.29929e-1	0.0269	0.0269
4	7.448	BB	0.0981	3.99172	6.47545e-1	0.0583	0.0583
5	8.693	BB	0.0926	1.95797	3.36449e-1	0.0286	0.0286
6	9.627	BB	0.1018	21.12184	3.26019	0.3083	0.3083
7	10.612	BB	0.1044	45.19966	6.74501	0.6596	0.6596
8	11.921	BB	0.1033	3.97121	6.00675e-1	0.0580	0.0580
9	14.305	BB	0.0997	2.21275	3.58250e-1	0.0323	0.0323

Totals : 6852.07380 1144.82717

=====
*** End of Report ***