

File D:\DATA

Injection Date : 29 Jul 14 10:10 am

Sample Name : RKI-1447

Location :

Acq. Operator : XXXX

Inj : 1

Spec. Reported : MS Integration

Inj Volume : 1 ul

Acq. Method : C:\Chem32\1\METHODS\1-POS-2MIN.M

Analysis Method : C:\Chem32\1\METHODS\1-POS-2MIN.M

Sample Info : Easy-Access Method: '1-POS-2MIN'

Method Info : Mobile Phase: A: Water(0.01%TFA) B: ACN(0.01%TFA)

Gradient: 5%B increase to 100%B within 0.8min,100%B for 1.1min.

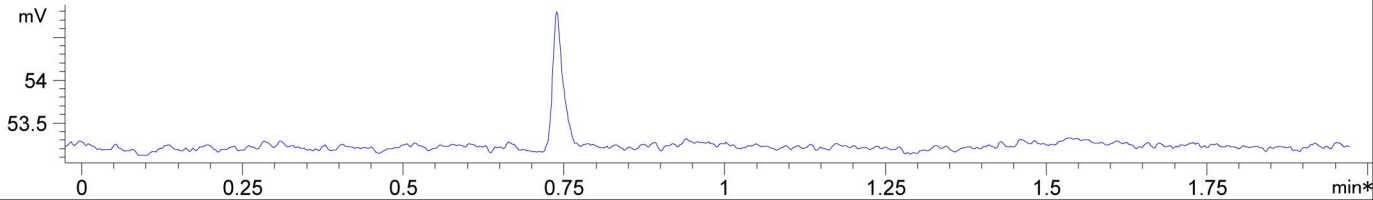
Flow Rate:1.5mL/min

Column: Chromolith Fast Gradien RP-18e,50-3mm.

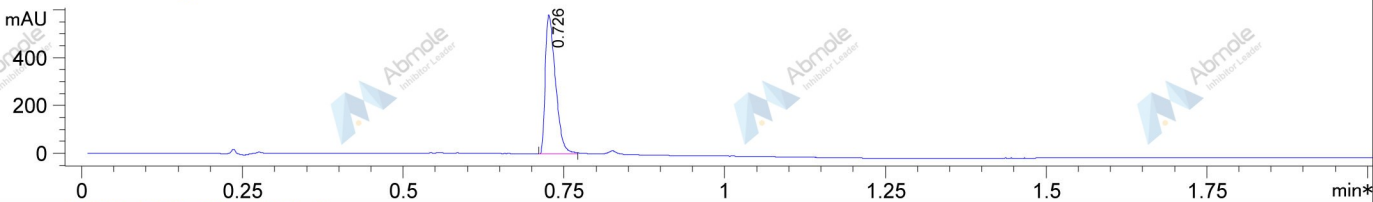
Column Temperature: 40C

Mass Range:100-1100

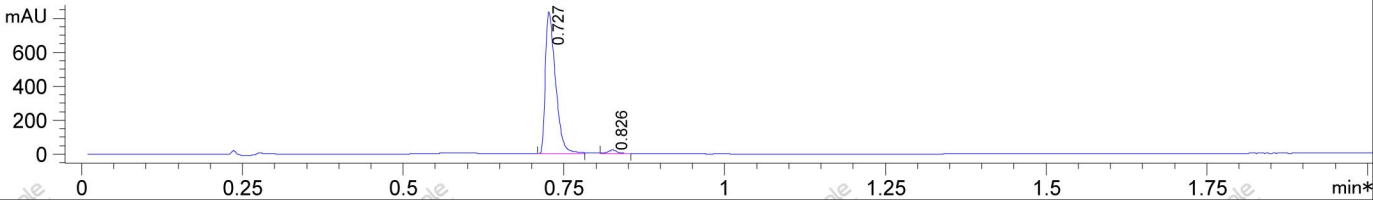
\*ADC1 A, ELSD



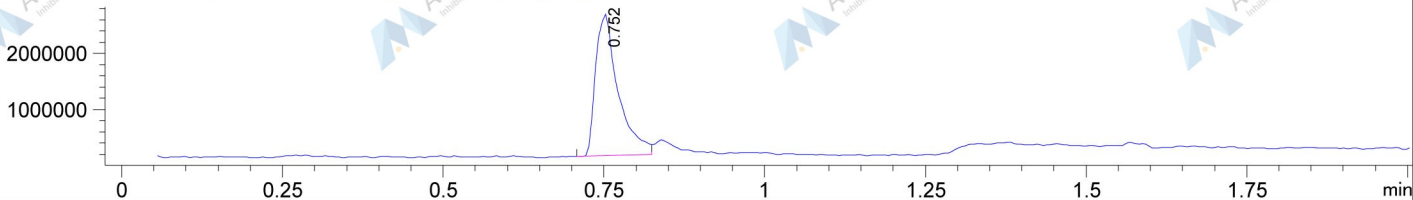
\*DAD1 A, Sig=214,4 Ref=off



\*DAD1 B, Sig=254,4 Ref=off



MSD1 TIC, MS File ES-API, Pos, Scan, Frag: 70,



Integration Results for ADC1 A, ELSD

| RetTim | Width | Area | Height | Area% |
|--------|-------|------|--------|-------|
|--------|-------|------|--------|-------|

Integration Results for DAD1 A, Sig=214,4 Ref=off

| RetTim | Width | Area   | Height | Area%  |
|--------|-------|--------|--------|--------|
| 0.73   | 0.02  | 641.14 | 582.22 | 100.00 |

Integration Results for DAD1 B, Sig=254,4 Ref=off

| RetTim | Width | Area   | Height | Area% |
|--------|-------|--------|--------|-------|
| 0.73   | 0.02  | 913.00 | 828.56 | 97.59 |
| 0.83   | 0.01  | 22.54  | 22.04  | 2.41  |

Ret. Time: 0.75

<<<< POSITIVE SPECTRA >>>>

