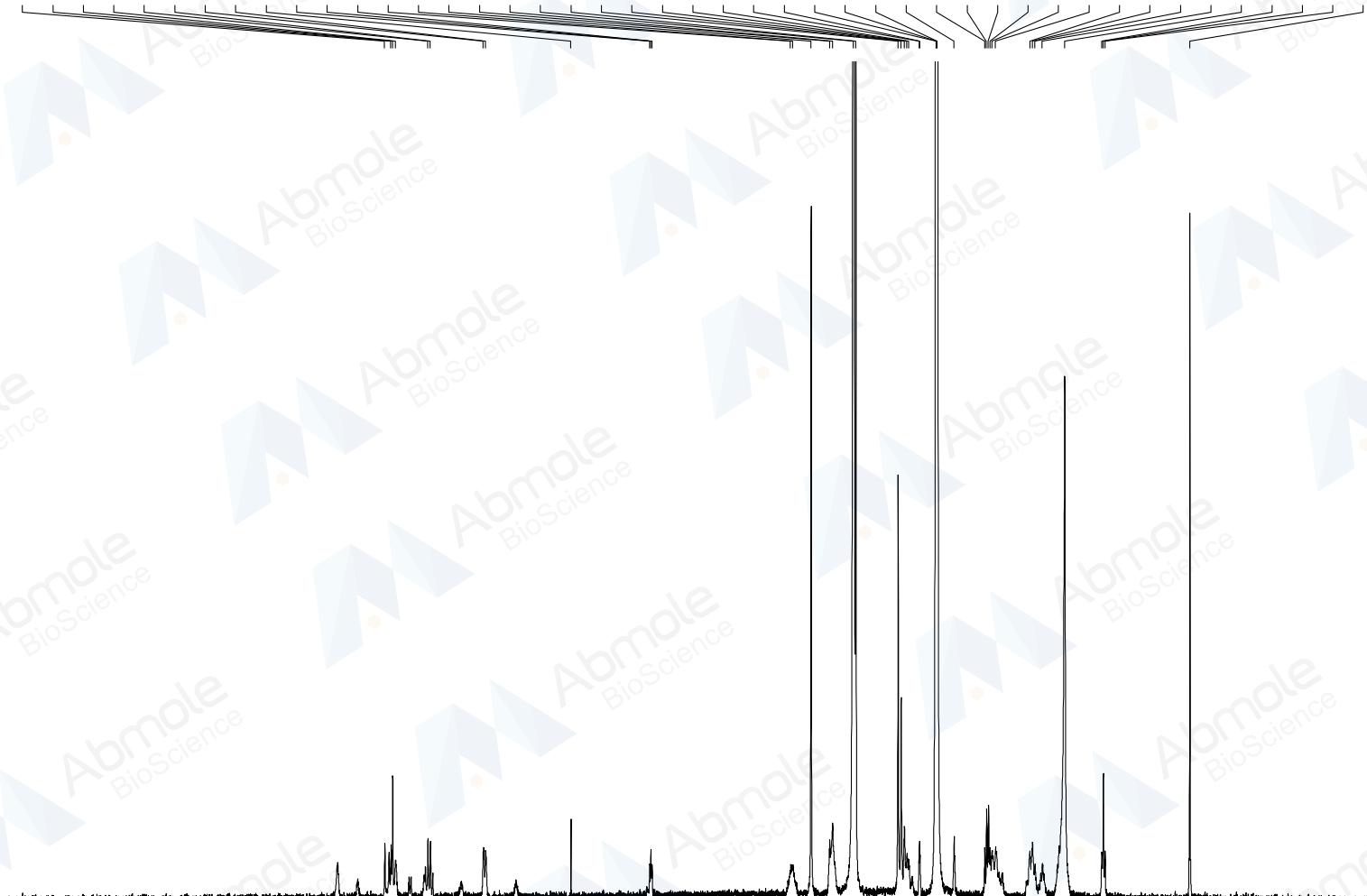




7.962
7.900
7.884
7.855
7.536
7.512
6.986
6.967
6.123
5.344
5.333
5.321
3.952
3.929
3.750
3.566
3.537
3.332
3.309
2.891
2.860
2.828
2.802
2.785
2.679
2.674
2.514
2.510
2.505
2.336
2.035
2.016
1.997
1.982
1.960
1.926
1.587
1.563
1.537
1.465
1.244
0.878
0.862
0.845
0.008



Current Data Parameters
NAME R547-01
EXPNO 1
PROCNO 1

F2 - Acquisition Parameters
Date_ 20170602
Time_ 4.57
INSTRUM spect
PROBHD 5 mm PABBO BB-
PULPROG zg30
TD 65536
SOLVENT DMSO
NS 16
DS 2
SWH 8278.146 Hz
FIDRES 0.126314 Hz
AQ 3.9584243 sec
RG 574.7
DW 60.400 usec
DE 8.00 usec
TE 296.9 K
D1 1.00000000 sec
TD0 1

==== CHANNEL f1 =====
NUC1 1H
P1 10.70 usec
PL1 -3.00 dB
SFO1 400.1324710 MHz

F2 - Processing parameters
SI 32768
SF 400.130000 MHz
WDW EM
SSB 0
LB 0.30 Hz
GB 0
PC 1.00

NN NM V U T S R Q P O N M N éã

MKRU
MKSR
NKVQ
MKPU
NKNV
MKTN
NKMIM
MKTS
MKPV
MKUO
NKPQ
OKNT
NKW
PKSU
PKOT
OKSP
RKPR
NKNV