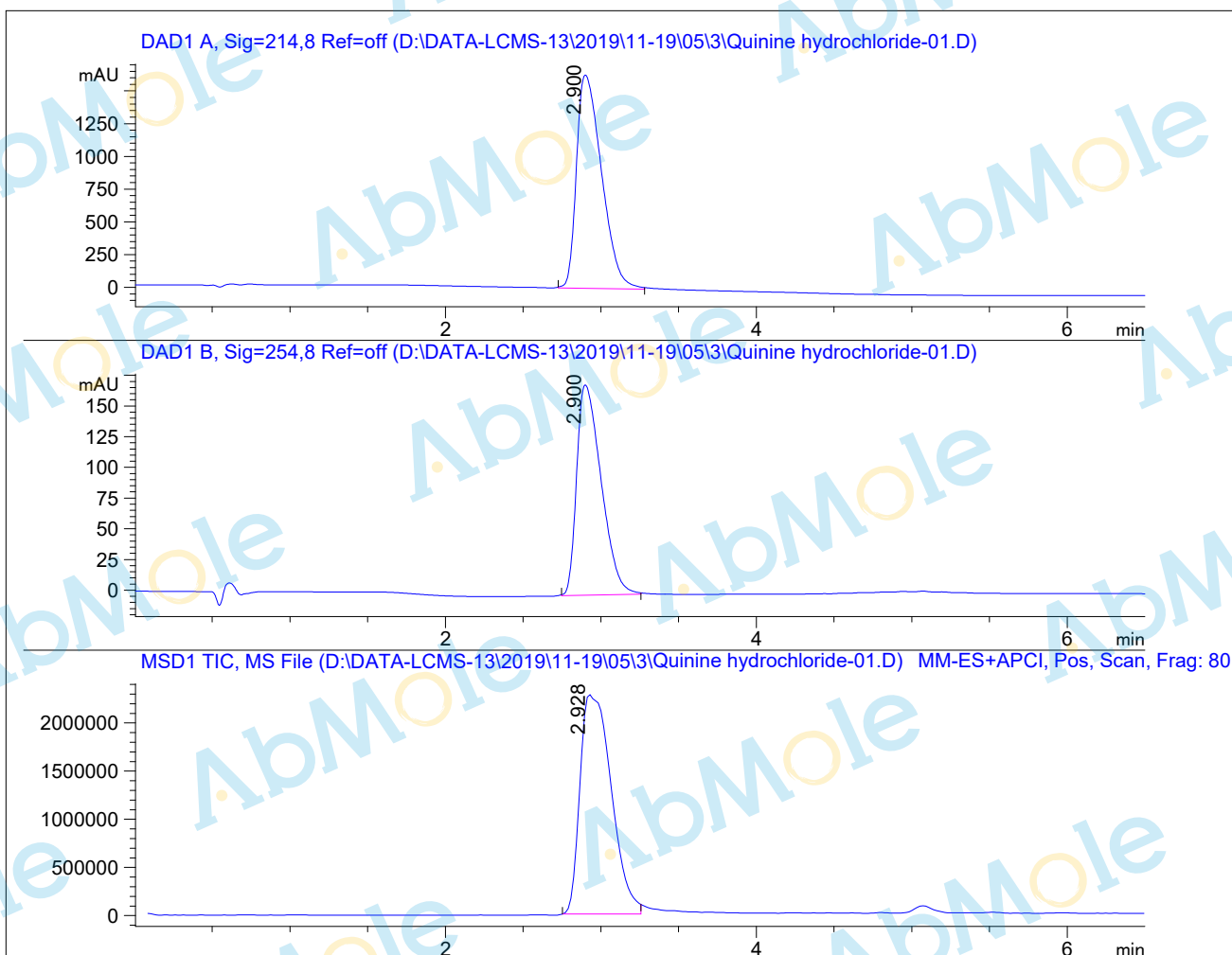


# LC-MS Report

Sample Name : Quinine hydrochloride-01  
Data File : D:\DATA-LCMS-13\2019\11-19\05\3\Quinine hydrochloride-01.D  
Injection Date : Tue, 5. Nov. 2019 Inj. Vol. : 5ul  
Acq Operator : LCMS-13 Location : Vial 13  
Acq. Method : D:\data-lcms-13\2019\11-19\05\3\P-05-95.M  
Method Info. : column:C18;column size:4.6\*50mm ;mobile phase:B (ACN)  
A(0.02%NH4Ac); gradient(B%)!as Acq.Method above



## Integration Results

Signal 1: DAD1 A, Sig=214,8 Ref=off

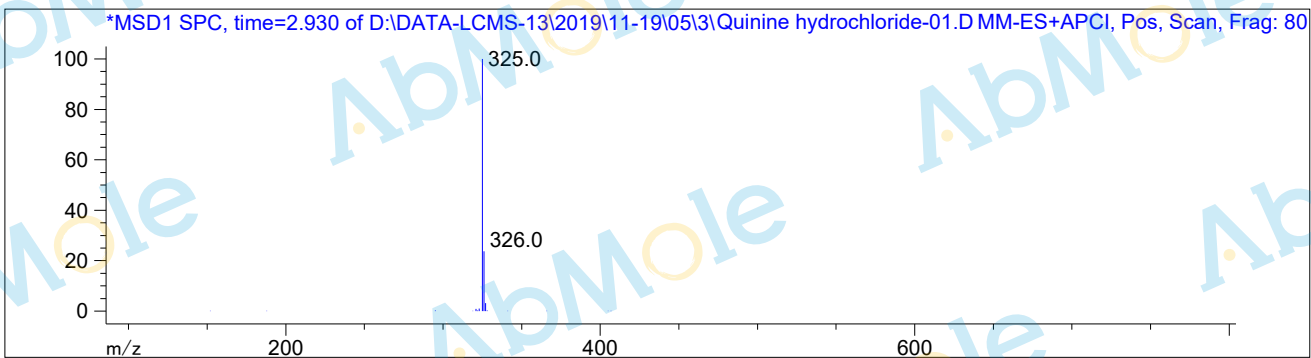
#	R.T.	Type	Height	Height%	Width	Area	Area %
1	2.900	FM	1629.176	100.000	0.186	18221.242	100.000

Signal 2: DAD1 B, Sig=254,8 Ref=off

#	R.T.	Type	Height	Height%	Width	Area	Area %
1	2.900	BB	171.446	100.000	0.172	1874.987	100.000

Signal 3: MSD1 TIC, MS File

#	R.T.	Type	Height	Height%	Width	Area	Area %
1	2.928	MM	2.279e+006	100.000	0.233	3.191e+007	100.000



\*\*\* End of Report \*\*\*