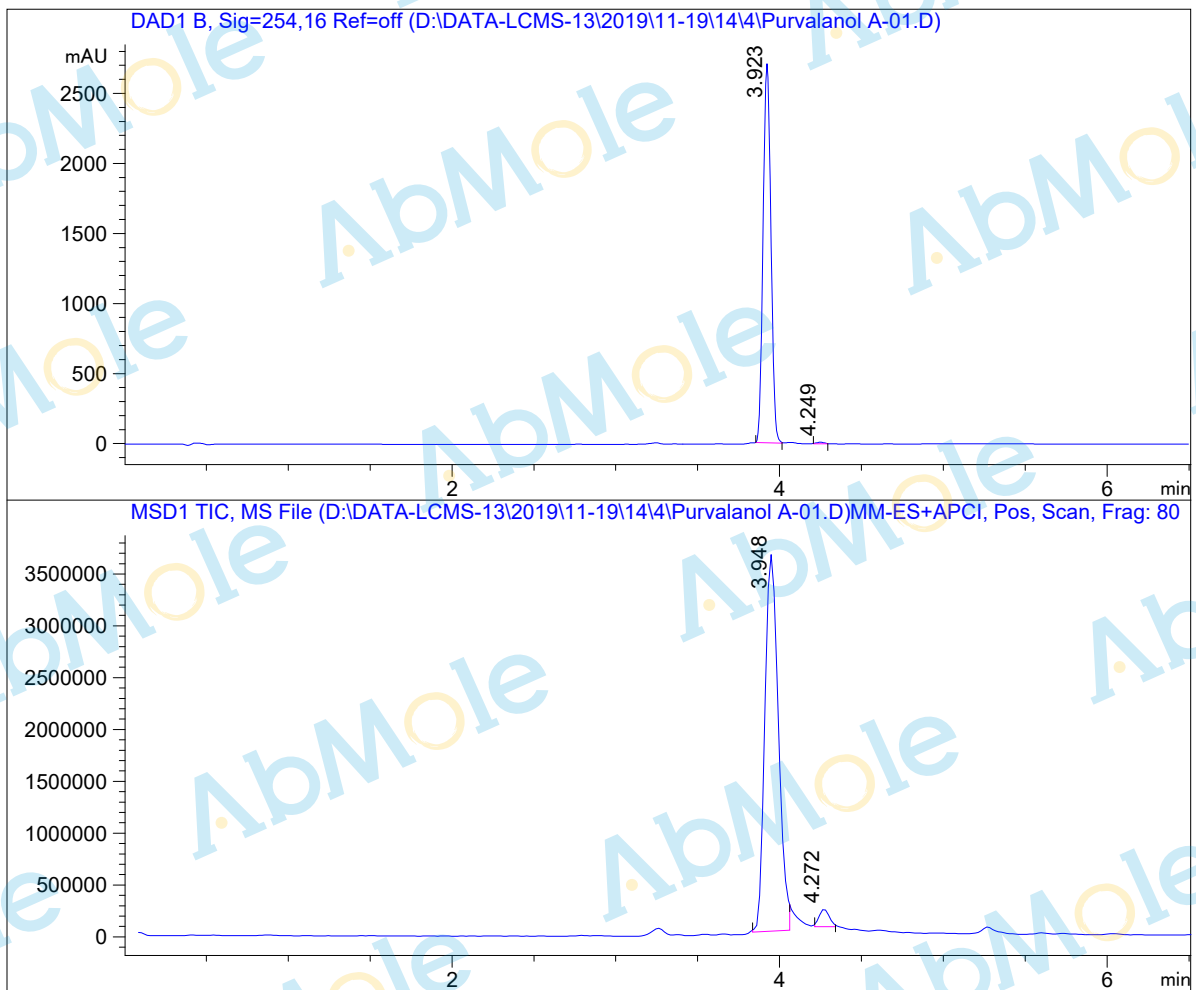


# LC - MS Report

Sample Name : Purvalanol A-01  
Data File : D:\DATA-LCMS-13\2019\11-19\14\4\Purvalanol A-01.D  
Injection Date : Thu, 14. Nov. 2019 Inj. Vol. : 5ul  
Acq Operator : LCMS-13 Location : Vial 86  
Acq. Method : D:\data-lcms-13\2019\11-19\14\4\P-05-95-C2.M  
Method Info. : column:C18;column size:4.6\*50mm ;mobile phase:B (ACN)  
A(0.02%NH4Ac); gradient(B%)!as Acq.Method above



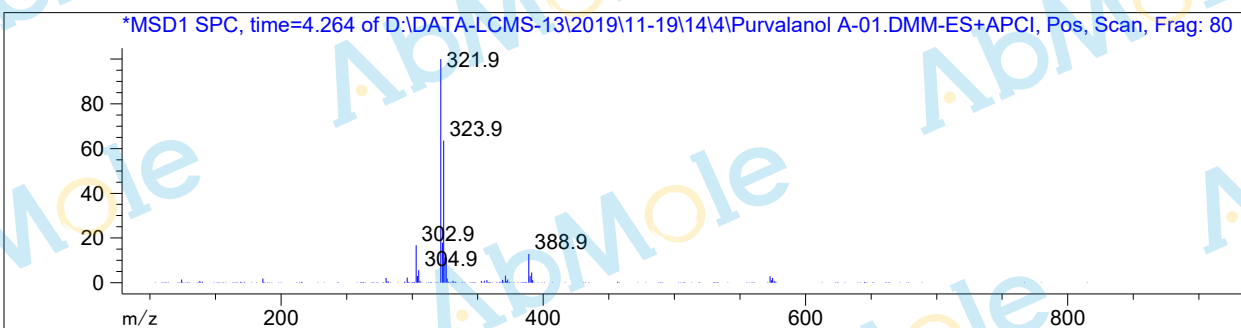
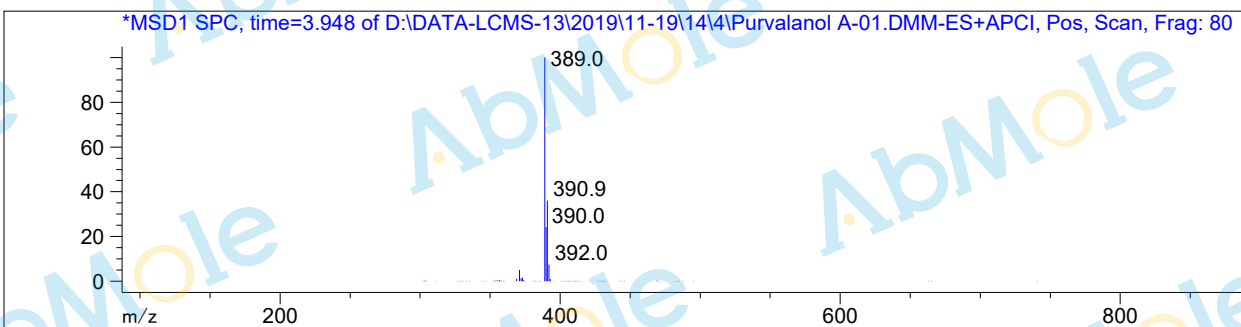
## Integration Results

Signal 1: DAD1 B, Sig=254,16 Ref=off

#	R.T.	Type	Height	Height%	Width	Area	Area %
1	3.923	MM	2717.435	99.567	0.055	8973.495	99.575
2	4.249	MM	11.823	0.433	0.054	38.272	0.425

Signal 2: MSD1 TIC, MS File

#	R.T.	Type	Height	Height%	Width	Area	Area %
1	3.948	MM	3.662e+006	95.555	0.095	2.096e+007	96.741
2	4.272	FM	170366.344	4.445	0.069	706074.625	3.259



\*\*\* End of Report \*\*\*