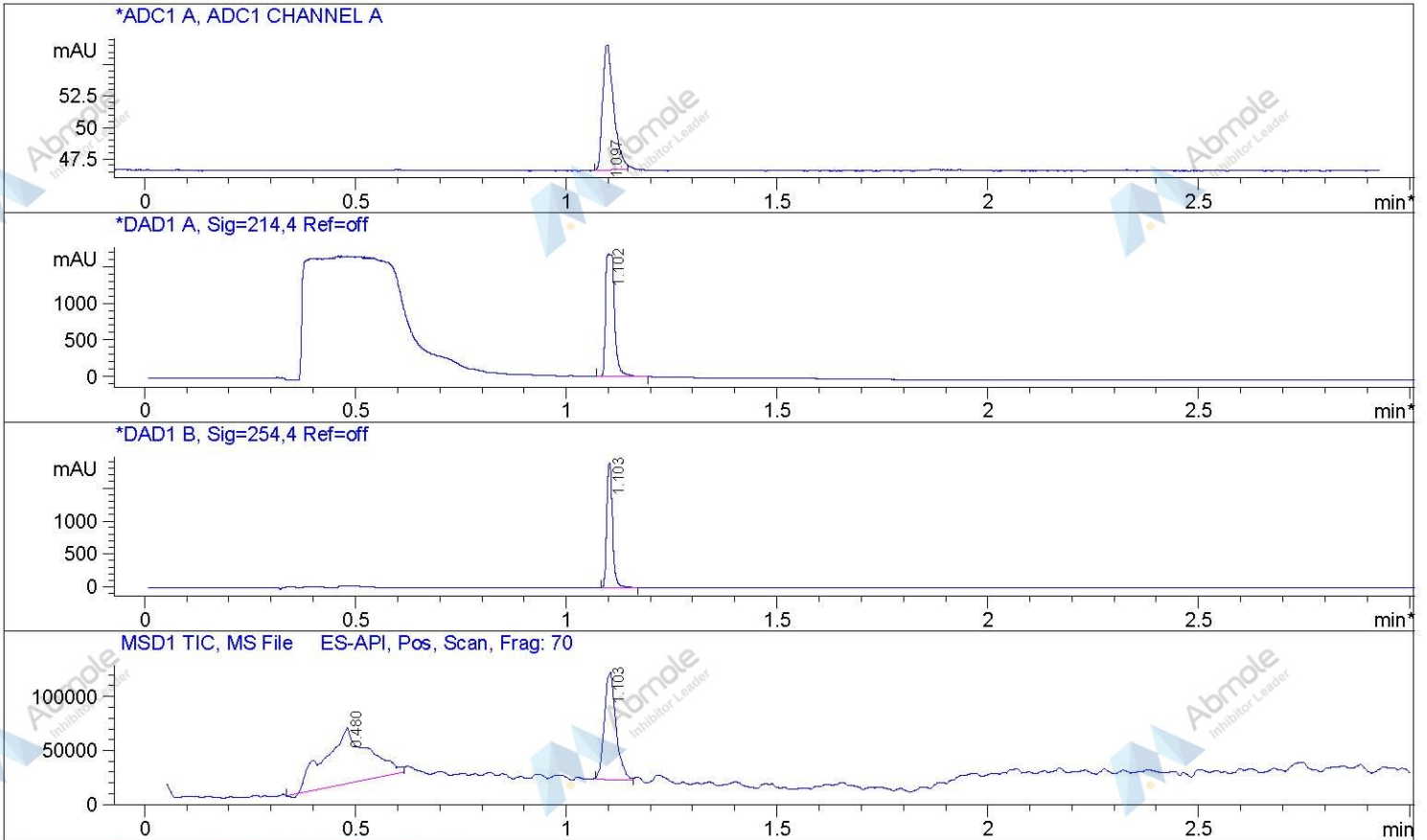


File : Pomalidomide- CMS

Method Info : Mobile Phase: A: water(0.01%TFA) B:ACN(0.01%TFA)
Gradient: 5%B increase to 95%B within 1.6 min,
95%B for 1.4min,back to 5%B within 0.01min
Flow Rate:2.0ml/min
Column :SunFire C18, 4.6*50mm, 3.5um
Oven Temperature : 50C



Integration Results for DAD1 A, Sig=214,4 Ref=off

RetTim	Width	Area	Height	Area%
1.10	0.02	2467.18	1673.80	100.00

Integration Results for DAD1 B, Sig=254,4 Ref=off

RetTim	Width	Area	Height	Area%
1.10	0.02	1800.67	1890.26	100.00

Ret. Time: 0.48 <<<< POSITIVE SPECTRA >>>>

Ret. Time: 1.10

