

LCMS Report

Sample Name : Phloridzin-01
Data File : D:\DATA-LCMS-13\2020\03-20\19\2\Phloridzin-01.D
Injection Date : Thu, 19. Mar. 2020 Inj. Vol. : 3ul
Acq Operator : LCMS-13 Location : Vial 83
Acq. Method : D:\data-lcms-13\2020\03-20\19\2\P-05-95.M
Method Info. : column:Ecclipse XDB-C18 5um 4.6*150mm ;mobile phase:B(ACN) A(0.02%NH4AC); gradient(B%)!as Acq.Method above



Integration Results

Signal 1: DAD1 A, Sig=214,8 Ref=off

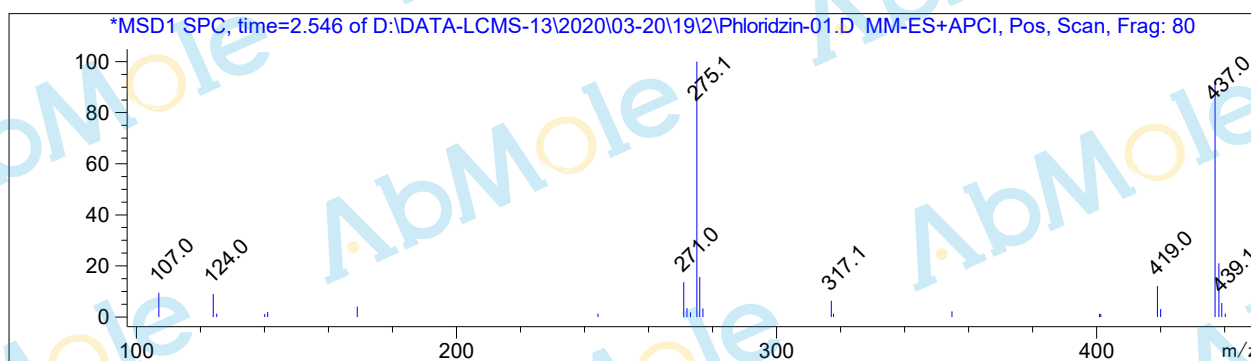
#	R.T.	Type	Height	Height%	Width	Area	Area %
1	2.526	FM	1626.021	100.000	0.046	4475.930	100.000

Signal 2: DAD1 B, Sig=254,8 Ref=off

#	R.T.	Type	Height	Height%	Width	Area	Area %
1	2.525	FM	298.662	100.000	0.046	817.269	100.000

Signal 3: MSD1 TIC, MS File

#	R.T.	Type	Height	Height%	Width	Area	Area %
1	2.552	BB	13092.600	100.000	0.063	52790.039	100.000



*** End of Report ***