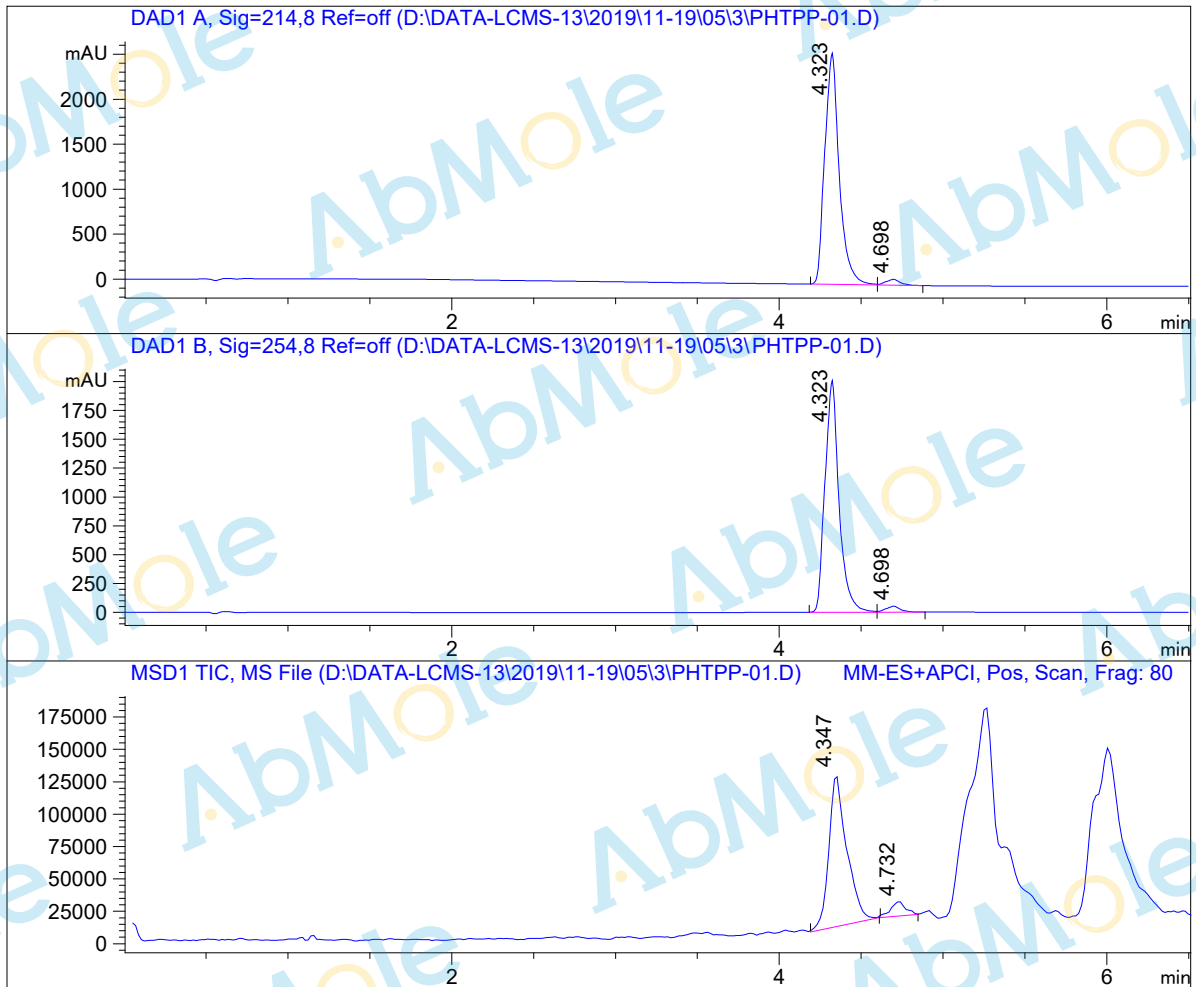


LC - M S Report

Sample Name : PHTPP-01
 Data File : D:\DATA-LCMS-13\2019\11-19\05\3\PHTPP-01.D
 Injection Date : Tue, 5. Nov. 2019 Inj. Vol. : 5ul
 Acq Operator : LCMS-13 Location : Vial 42
 Acq. Method : D:\data-lcms-13\2019\11-19\05\3\P-05-95.M
 Method Info. : column:C18;column size:4.6*50mm ;mobile phase:B (ACN)
 A(0.02%NH4Ac); gradient(B%)!as Acq.Method above



Integration Results

Signal 1: DAD1 A, Sig=214,8 Ref=off

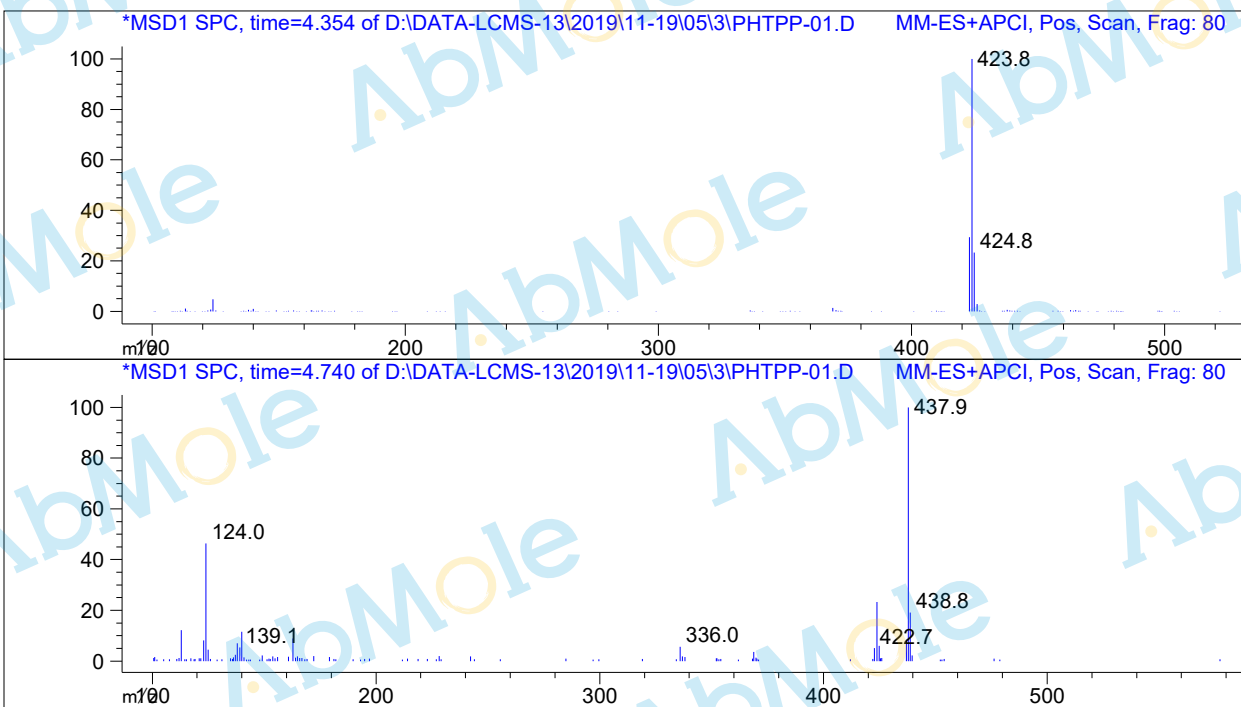
#	R.T.	Type	Height	Height%	Width	Area	Area %
1	4.323	BV	2571.461	97.539	0.086	15779.992	97.592
2	4.698	VB	64.869	2.461	0.082	389.435	2.408

Signal 2: DAD1 B, Sig=254,8 Ref=off

#	R.T.	Type	Height	Height%	Width	Area	Area %
1	4.323	BV	2009.073	97.488	0.084	11991.358	97.381
2	4.698	VB	51.762	2.512	0.085	322.477	2.619

Signal 3: MSD1 TIC, MS File

#	R.T.	Type	Height	Height%	Width	Area	Area %
1	4.347	MM	118473.391	91.143	0.126	893201.438	92.555
2	4.732	MM	11512.884	8.857	0.104	71844.383	7.445



*** End of Report ***