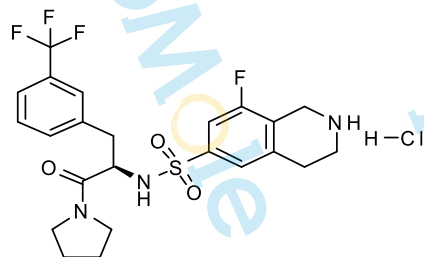


9.717  
 8.538  
 8.515  
 7.578  
 7.560  
 7.539  
 7.475  
 7.469  
 7.450  
 7.335  
 7.223  
 7.201  
 4.284  
 4.203  
 4.187  
 3.414  
 3.344  
 3.176  
 3.118  
 3.110  
 3.053  
 3.040  
 2.977  
 2.961  
 2.944  
 2.929  
 2.844  
 2.821  
 2.810  
 2.506  
 2.502  
 2.498  
 1.676  
 1.662  
 1.652  
 1.635  
 1.628  
 1.620  
 1.609  
 -0.000

Sample Name: PFI-2 hydrochloride-01  
 Chemical Formula: C<sub>23</sub>H<sub>26</sub>ClF<sub>4</sub>N<sub>3</sub>O<sub>3</sub>S  
 Molecular Weight: 535.98



CAS: 1627607-87-7

DMSO-d<sub>6</sub>, 400 MHz

