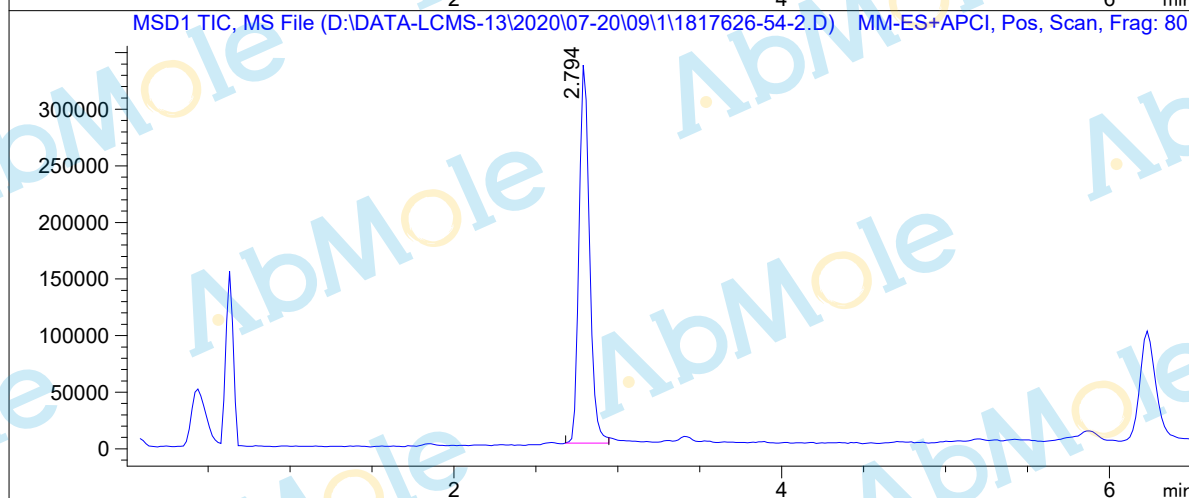
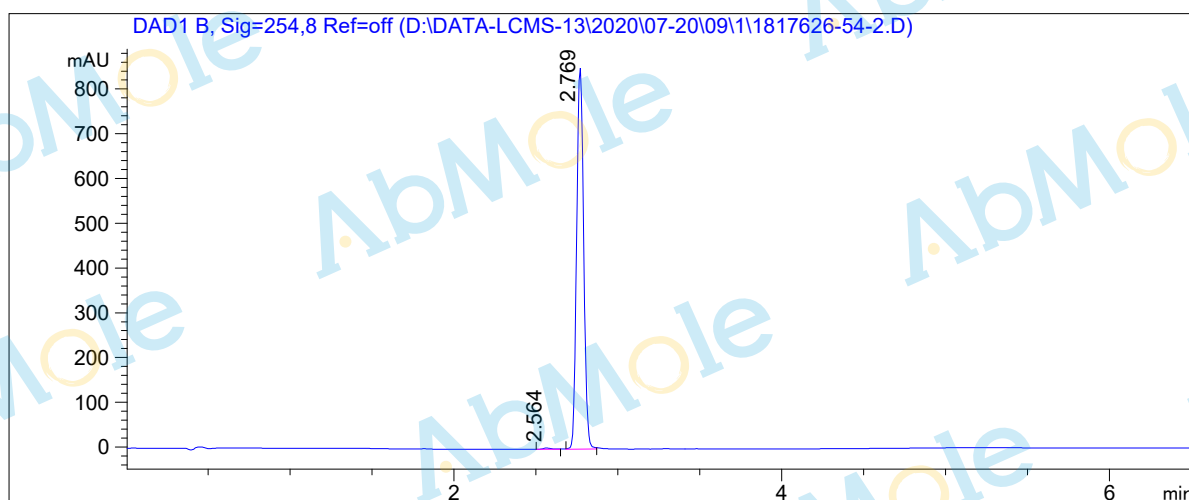


LCMS Report

Sample Name : PF06650833-01
Data File : D:\DATA-LCMS-13\2020\07-20\09\1\1817626-54-2.D
Injection Date : Thu, 9. Jul. 2020 Inj. Vol. : 2ul
Acq Operator : LCMS-13 Location : Vial 52
Acq. Method : D:\data-lcms-13\2020\07-20\09\1\P-05-95-TFA.M
Method Info. : column:Xbridge C18 5um 4.6*50mm ;mobile phase:B (ACN)
A(0.05%TFA) ; gradient(B%)!as Acq.Method above



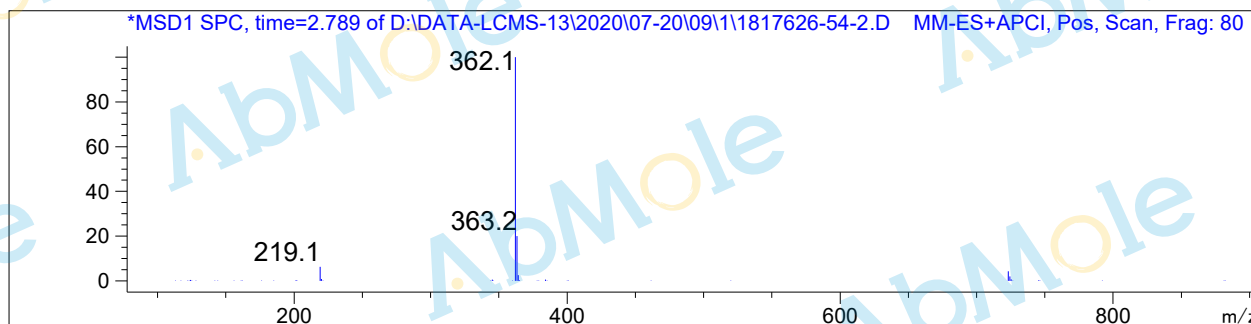
Integration Results

Signal 1: DAD1 B, Sig=254,8 Ref=off

#	R.T.	Type	Height	Height%	Width	Area	Area %
1	2.564	BB	2.863	0.335	0.057	11.122	0.436
2	2.769	BB	852.671	99.665	0.047	2538.650	99.564

Signal 2: MSD1 TIC, MS File

#	R.T.	Type	Height	Height%	Width	Area	Area %
1	2.794	MM	342268.688	100.000	0.072	1.488e+006	100.000



*** End of Report ***