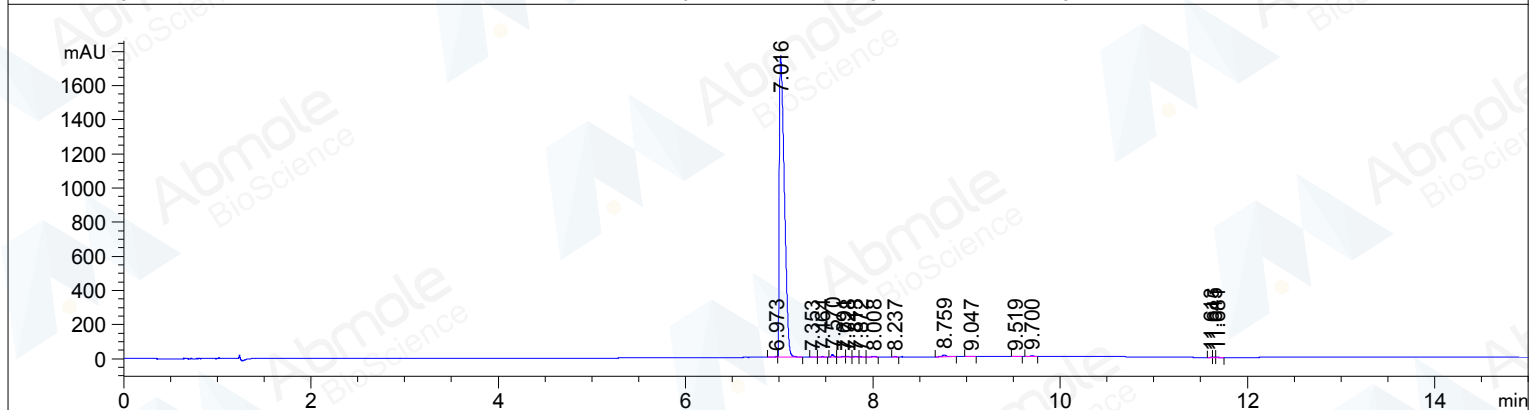
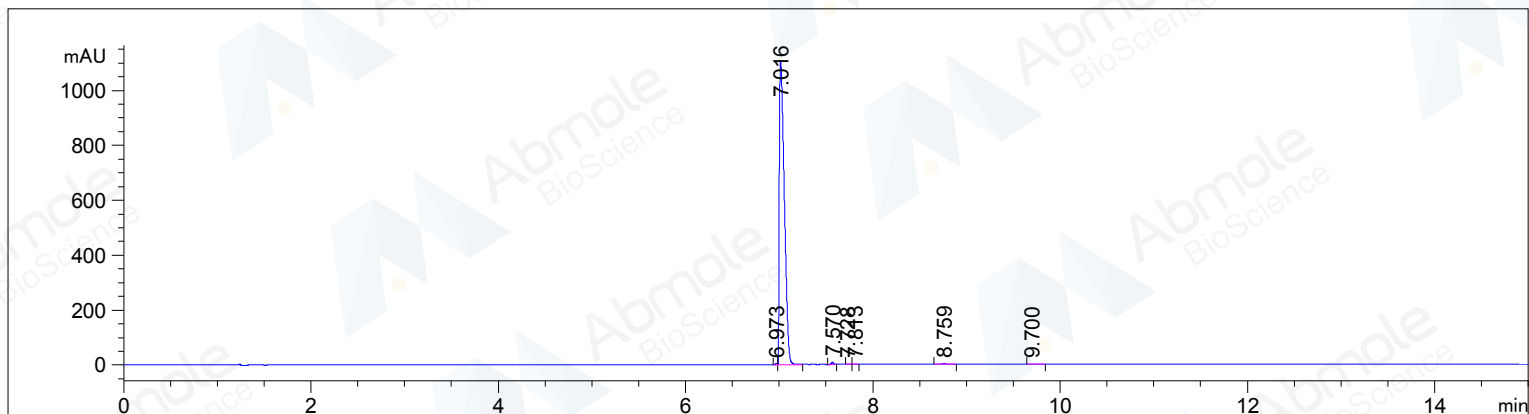


```

=====
Acq. Operator   : AbMole                      Seq. Line :   12
Acq. Instrument : HPLC 1260                   Location  : Vial 70
Injection Date  : 2017-6-5 22:03:36          Inj       :    1
                                           Actual Inj Volume : 1.500 µl
Acq. Method    : D:\HPLC\DATA\2016\ 2017-06-05 18-30-23\ZBL.M
Last changed   : 2017-6-4 21:19:01 : Xu Hui
Analysis Method : D:\HPLC\METHOD \2017.06.03\ ZBL.M
Last changed   : 2017-6-10 18:24:13 : hu li
                (modified after loading)
Methods Information : XDB-C18 4.6mm*150mm 5um
=====
  
```



=====
 Area Percent Report
 =====

```

Sorted By      :      Signal
Multiplier:    :      1.0000
Dilution:      :      1.0000
Use Multiplier & Dilution Factor with ISTDs
  
```

Signal 1: DAD1 B, Sig=254,4 Ref=off

Peak #	RetTime [min]	Type	Width [min]	Area [mAU*s]	Height [mAU]	Area %
1	6.973	BV	0.0206	5.43533	4.19932	0.1312
2	7.016	VV	0.0567	4106.79980	1108.25879	99.0975
3	7.570	BV	0.0263	12.35913	7.08770	0.2982
4	7.728	VB	0.0288	2.79815	1.43314	0.0675
5	7.813	BV	0.0277	3.83009	2.10445	0.0924
6	8.759	BB	0.0378	8.29250	3.25175	0.2001

Peak #	RetTime [min]	Type	Width [min]	Area [mAU*s]	峰高 [mAU]	Area %
7	9.700	BB	0.0397	4.68816	1.78079	0.1131
Totals:				4144.20317	1128.11594	

Signal 2: DAD1 C, Sig=214,4 Ref=off

Peak #	RetTime [min]	Type	Width [min]	Area [mAU*s]	Height [mAU]	Area %
1	6.973	BV	0.0214	8.32264	6.11844	0.1236
2	7.016	VV	0.0576	6606.73438	1766.47729	98.1448
3	7.353	BB	0.0320	2.32520	1.06347	0.0345
4	7.464	BB	0.0362	4.88854	1.92182	0.0726
5	7.570	BB	0.0257	23.05997	13.67179	0.3426
6	7.691	BV	0.0398	4.71279	1.60334	0.0700
7	7.728	VB	0.0281	4.91859	2.53948	0.0731
8	7.813	BV	0.0277	6.69582	3.69209	0.0995
9	7.872	VB	0.0306	2.39243	1.09214	0.0355
10	8.008	BV	0.0358	8.48729	3.43582	0.1261
11	8.237	VV	0.0334	2.59731	1.12594	0.0386
12	8.759	BV	0.0363	26.93399	10.90228	0.4001
13	9.047	VB	0.0428	4.23657	1.46166	0.0629
14	9.519	BB	0.0352	2.89975	1.26644	0.0431
15	9.700	BV	0.0380	11.47105	4.60743	0.1704
16	11.613	BV	0.0263	2.62998	1.51308	0.0391
17	11.645	VV	0.0296	3.78336	1.87253	0.0562
18	11.681	VB	0.0337	4.52900	1.97933	0.0673
Totals:				6731.61867	1826.34438	

=====
*** End of Report ***