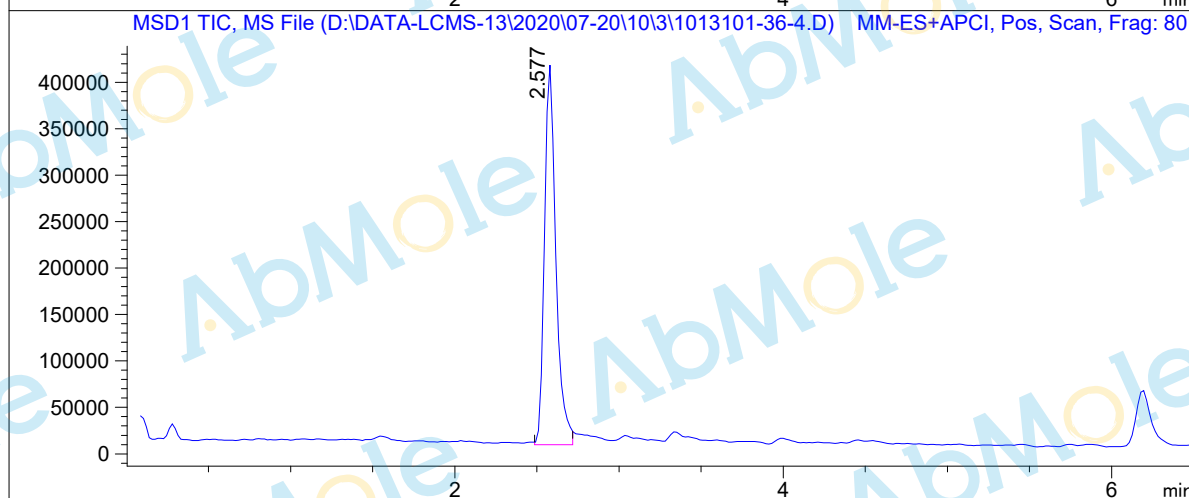
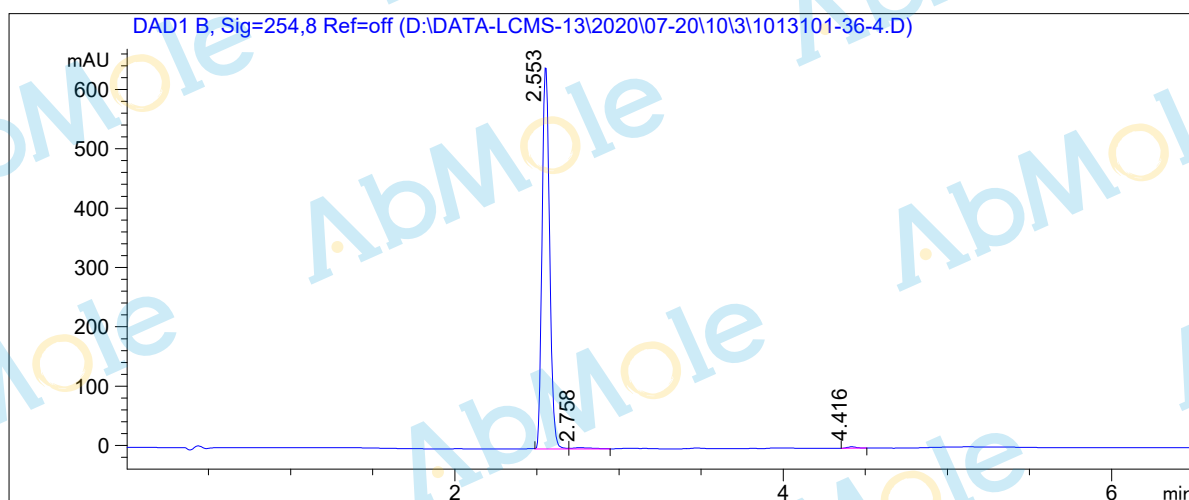


# LCMS Report

Sample Name : PF-04691502-02  
Data File : D:\DATA-LCMS-13\2020\07-20\10\3\1013101-36-4.D  
Injection Date : Sun, 12. Jul. 2020 Inj. Vol. : 2ul  
Acq Operator : LCMS-13 Location : Vial 63  
Acq. Method : D:\data-lcms-13\2020\07-20\10\3\P-05-95-TFA.M  
Method Info. : column:Xbridge C18 5um 4.6\*50mm ;mobile phase:B (ACN)  
A(0.05%TFA) ; gradient (B%)!as Acq.Method above



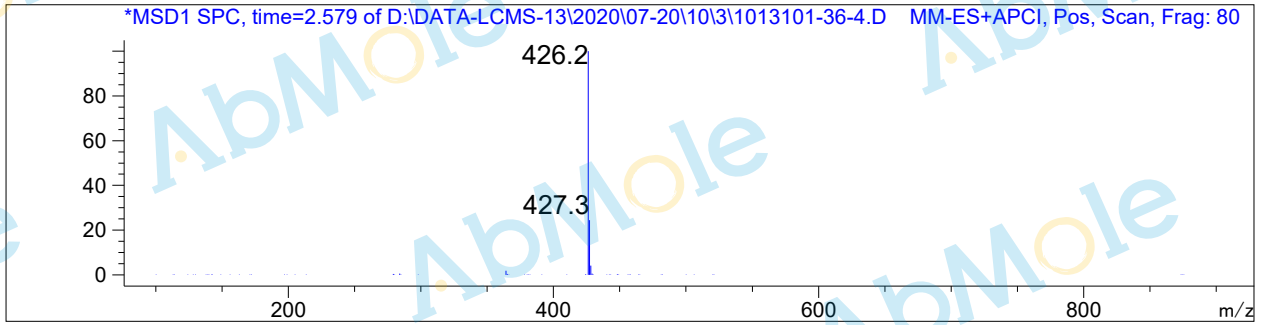
## Integration Results

Signal 1: DAD1 B, Sig=254,8 Ref=off

#	R.T.	Type	Height	Height%	Width	Area	Area %
1	2.553	FM	651.944	99.286	0.053	2058.849	98.681
2	2.758	FM	2.252	0.343	0.136	18.423	0.883
3	4.416	BB	2.434	0.371	0.058	9.107	0.436

Signal 2: MSD1 TIC, MS File

#	R.T.	Type	Height	Height%	Width	Area	Area %
1	2.577	MM	414837.688	100.000	0.080	1.982e+006	100.000



\*\*\* End of Report \*\*\*