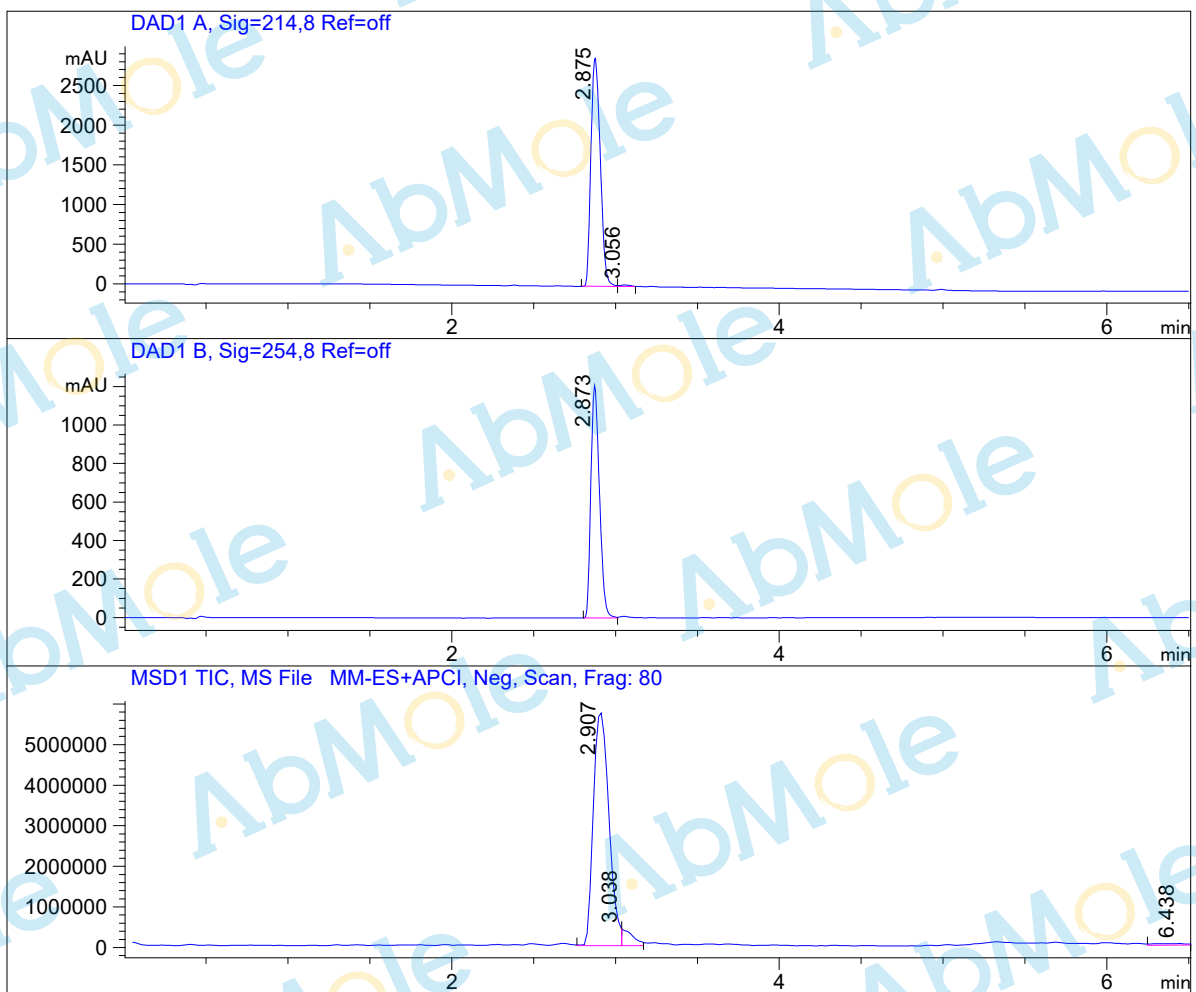


LC-MS Report

Sample Name : PF-04418948-01
Data File : D:\DATA-LCMS-13\2020\01-20\14\4\PF-04418948-01.D
Injection Date : Tue, 14. Jan. 2020 Inj. Vol. : 5ul
Acq Operator : LCMS-13 Location : Vial 55
Acq. Method : D:\data-lcms-13\2020\01-20\14\4\N-05-95.M
Method Info. : column:Xbridge C18 5um 4.6*30mm ;mobile phase:B (ACN)
A(0.02%NH4Ac); gradient(B%)!as Acq.Method above



Integration Results

Signal 1: DAD1 A, Sig=214,8 Ref=off

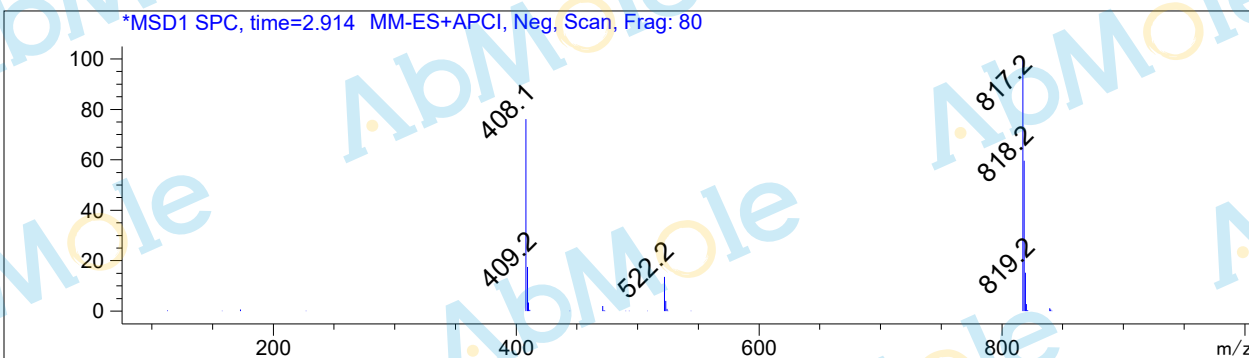
#	R.T.	Type	Height	Height%	Width	Area	Area %
1	2.875	MF	2893.337	99.346	0.066	11429.051	99.336
2	3.056	FM	19.037	0.654	0.067	76.434	0.664

Signal 2: DAD1 B, Sig=254,8 Ref=off

#	R.T.	Type	Height	Height%	Width	Area	Area %
1	2.873	BV	1210.402	100.000	0.056	4392.303	100.000

Signal 3: MSD1 TIC, MS File

#	R.T.	Type	Height	Height%	Width	Area	Area %
1	2.907	MF	5.801e+006	92.735	0.111	3.872e+007	94.449
2	3.038	MF	416506.031	6.659	0.070	1.757e+006	4.286
3	6.438	VBA	37895.324	0.606	0.175	518544.594	1.265



Error 16167 occurred in Command GetDataMinMax in macro evaluate at line 366 in file STDIN:
A register is empty.

*** End of Report ***