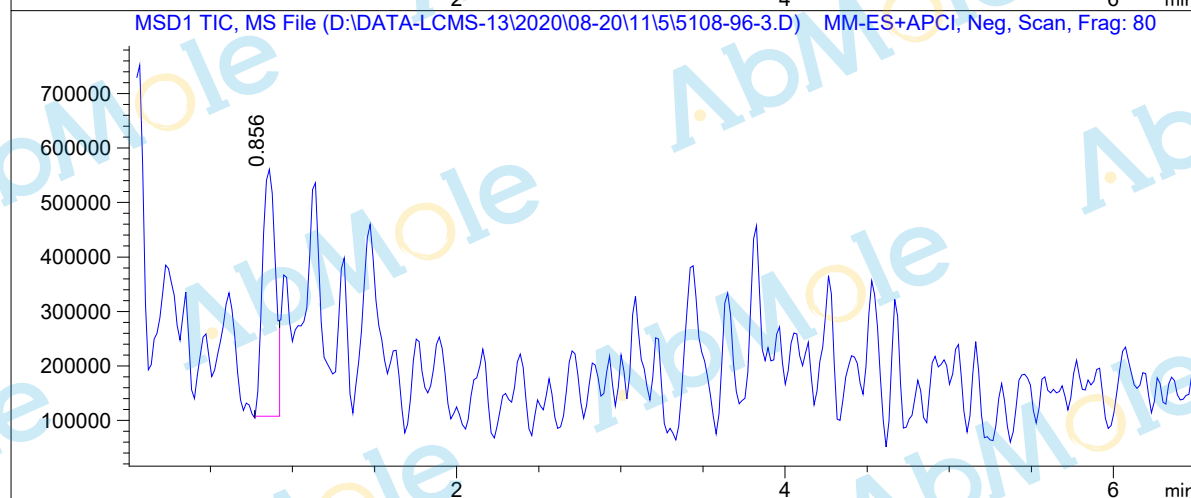
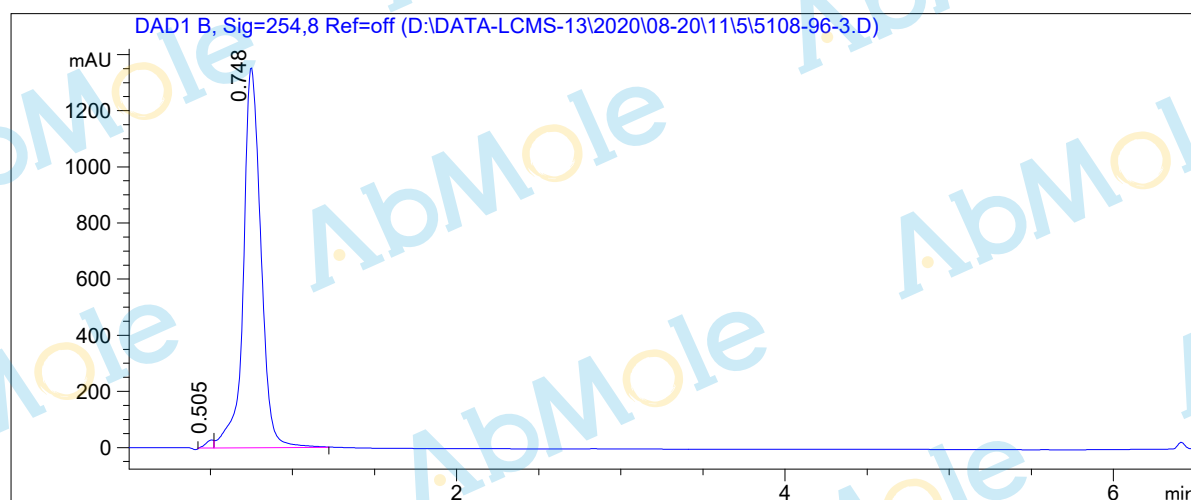


LCMS Report

Sample Name : PDTC-02
Data File : D:\DATA-LCMS-13\2020\08-20\11\5\5108-96-3.D
Injection Date : Tue, 11. Aug. 2020 Inj. Vol. : 5ul
Acq Operator : LCMS-13 Location : Vial 94
Acq. Method : D:\data-lcms-13\2020\08-20\11\5\N-02-20.M
Method Info. : column:Xbridge C18 5um 4.6*50mm ;mobile phase:B (ACN)
A(0.02%NH4Ac); gradient(B%)!as Acq.Method above



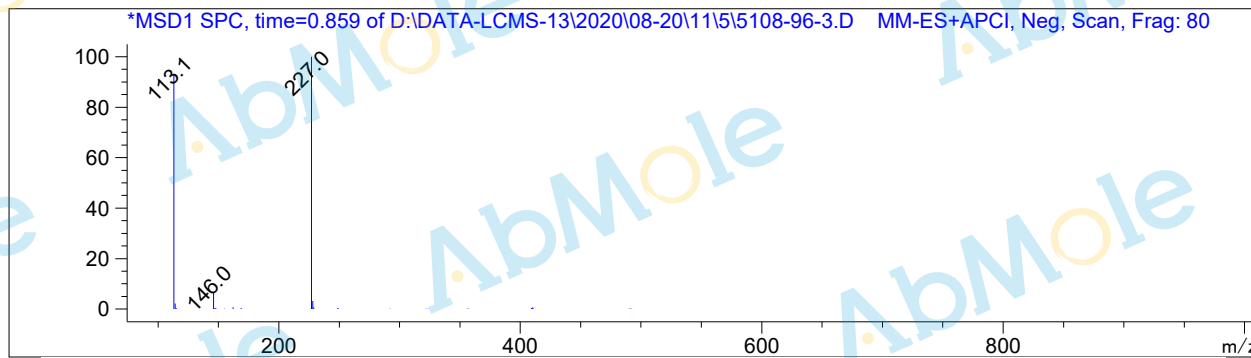
Integration Results

Signal 1: DAD1 B, Sig=254,8 Ref=off

#	R.T.	Type	Height	Height%	Width	Area	Area %
1	0.505	MF	28.932	2.088	0.056	97.373	0.956
2	0.748	FM	1356.457	97.912	0.124	10083.137	99.044

Signal 2: MSD1 TIC, MS File

#	R.T.	Type	Height	Height%	Width	Area	Area %
1	0.856	MM	456817.656	100.000	0.093	2.548e+006	100.000



*** End of Report ***