

LCMS Report

Sample Name : Oltipraz-04
Data File : D:\DATA-LCMS-13\2020\05-20\11\4\64224-21-1.D
Injection Date : Mon, 11. May. 2020 Inj. Vol. : 3ul
Acq Operator : LCMS-13 Location : Vial 16
Acq. Method : D:\data-lcms-13\2020\05-20\11\4\P-10-80-TFA.M
Method Info. : column:Xbridge C18 5um 4.6*50mm ;mobile phase:B (ACN)
A(0.05%TFA) ; gradient(B%)!as Acq.Method above



Integration Results

Signal 1: DAD1 A, Sig=214,8 Ref=off

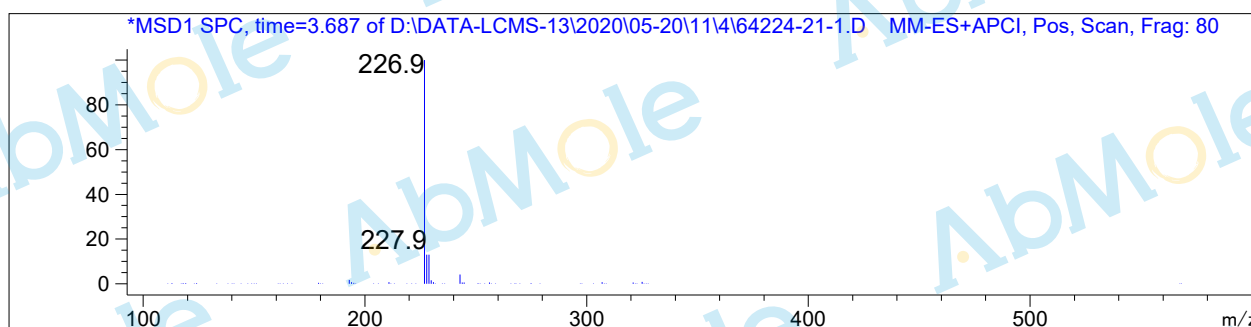
#	R.T.	Type	Height	Height%	Width	Area	Area %
1	3.562	MF	12.125	2.551	0.053	38.332	1.819
2	3.660	FM	463.181	97.449	0.074	2069.180	98.181

Signal 2: DAD1 B, Sig=254,8 Ref=off

#	R.T.	Type	Height	Height%	Width	Area	Area %
1	3.661	BB	339.094	100.000	0.067	1470.182	100.000

Signal 3: MSD1 TIC, MS File

#	R.T.	Type	Height	Height%	Width	Area	Area %
1	3.685	BB	142891.156	100.000	0.092	805466.625	100.000



*** End of Report ***