

LC-MS Report

Sample Name : OTX015-20
 Data File : D:\DATA-LCMS-13\2020\03-20\10\1\OTX015-20.D
 Injection Date : Tue, 10. Mar. 2020 Inj. Vol. : 5ul
 Acq Operator : LCMS-13 Location : Vial 54
 Acq. Method : D:\data-lcms-13\2020\03-20\10\1\P-05-95.M
 Method Info. : column:Xbridge C18 5um 4.6*30mm ;mobile phase:B (ACN)
 A(0.02%NH4Ac); gradient(B%)!as Acq.Method above



Integration Results

Signal 1: DAD1 A, Sig=214,8 Ref=off

#	R.T.	Type	Height	Height%	Width	Area	Area %
1	3.495	BB	1677.459	98.808	0.047	5032.030	98.680
2	3.788	BB	15.250	0.898	0.050	50.258	0.986
3	4.485	MF	4.984	0.294	0.057	17.069	0.335

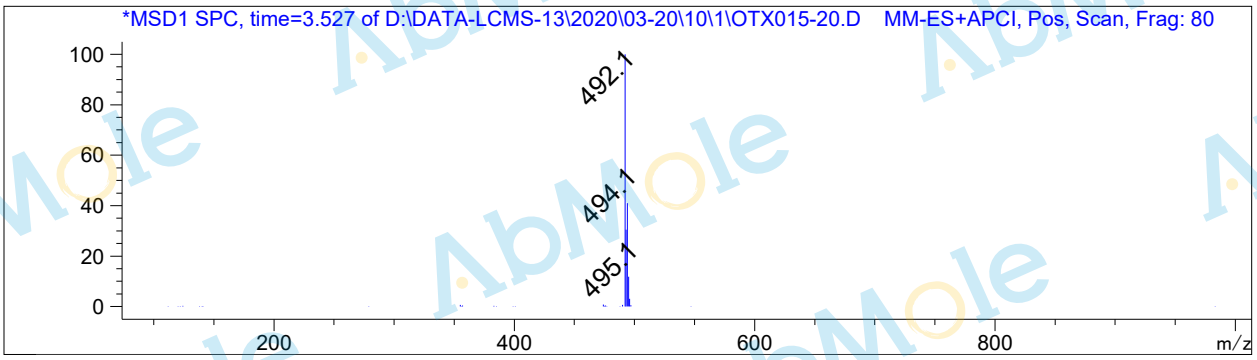
#	R.T.	Type	Height	Height%	Width	Area	Area %
---	------	------	--------	---------	-------	------	--------

Signal 2: DAD1 B, Sig=254,8 Ref=off

#	R.T.	Type	Height	Height%	Width	Area	Area %
1	3.495	BB	2406.355	99.699	0.048	7365.643	99.694
2	4.487	BB	7.263	0.301	0.050	22.624	0.306

Signal 3: MSD1 TIC, MS File

#	R.T.	Type	Height	Height%	Width	Area	Area %
1	3.521	BB	353100.000	100.000	0.077	1.681e+006	100.000



*** End of Report ***