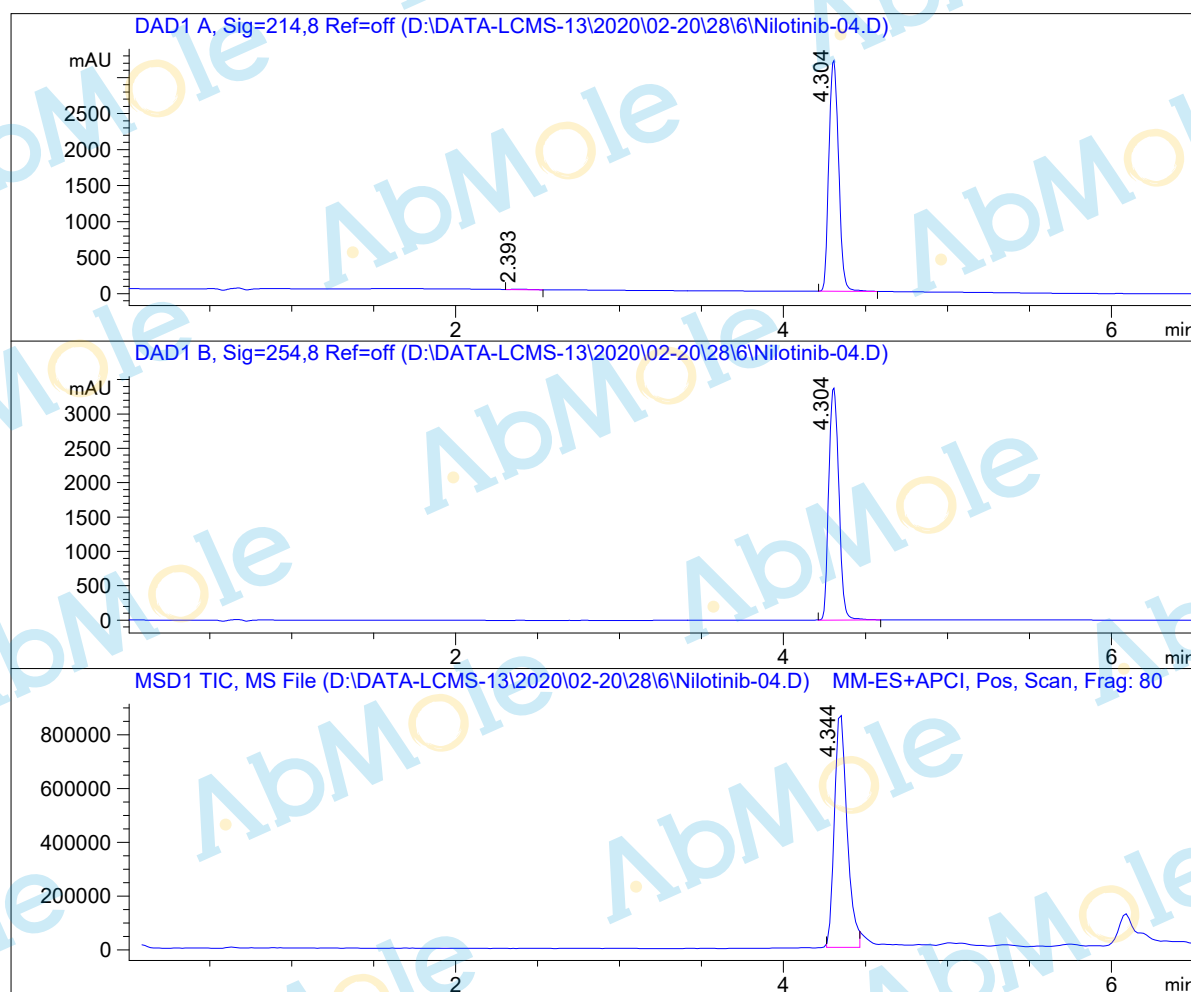


# LCMS Report

Sample Name : Nilotinib-04  
Data File : D:\DATA-LCMS-13\2020\02-20\28\6\Nilotinib-04.D  
Injection Date : Fri, 28. Feb. 2020 Inj. Vol. : 5ul  
Acq Operator : LCMS-13 Location : Vial 42  
Acq. Method : D:\data-lcms-13\2020\02-20\28\6\P-05-95.M  
Method Info. : column:Xbridge C18 5um 4.6\*30mm ;mobile phase:B (ACN)  
A(0.02%NH4Ac); gradient(B%)!as Acq.Method above



## Integration Results

Signal 1: DAD1 A, Sig=214,8 Ref=off

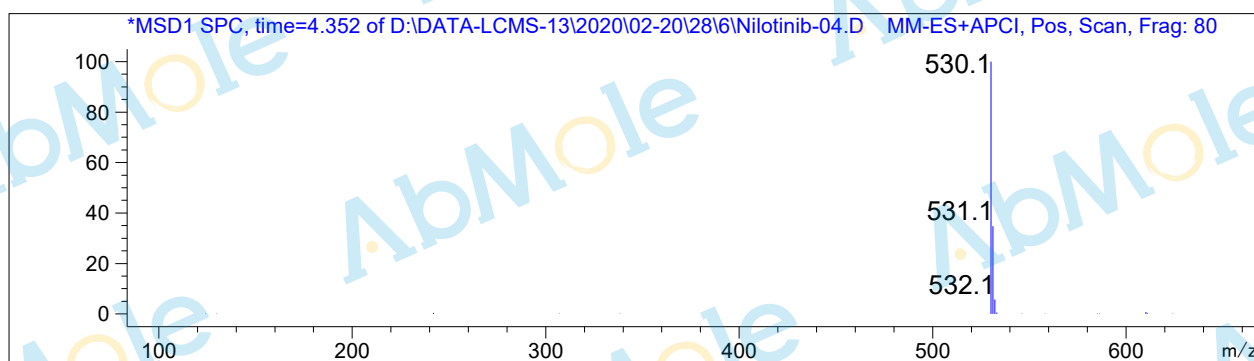
#	R.T.	Type	Height	Height%	Width	Area	Area %
1	2.393	BB	6.577	0.204	0.073	31.275	0.235
2	4.304	MF	3217.635	99.796	0.069	13249.572	99.765

Signal 2: DAD1 B, Sig=254,8 Ref=off

#	R.T.	Type	Height	Height%	Width	Area	Area %
1	4.304	MF	3387.525	100.000	0.071	14472.377	100.000

Signal 3: MSD1 TIC, MS File

#	R.T.	Type	Height	Height%	Width	Area	Area %
1	4.344	FM	889875.188	100.000	0.088	4.676e+006	100.000



\*\*\* End of Report \*\*\*