

File D:\DATA

Injection Date : 7 Aug 14 07:07 pm

Sample Name : NSC 66811

Location :

Acq. Operator : XXXX

Inj :

Spec. Reported : MS Integration

Inj Volume : 6 ul

Acq. Method : C:\Chem32\1\METHODS\1-POS-2MIN.M

Analysis Method : C:\Chem32\1\METHODS\1-POS-2MIN.M

Sample Info : Easy-Access Method: '1-POS-2MIN'

Method Info : Mobile Phase: A: Water(0.01%TFA) B: ACN(0.01%TFA)

Gradient: 5%B increase to 100%B within 0.8min,100%B for 1.1min.

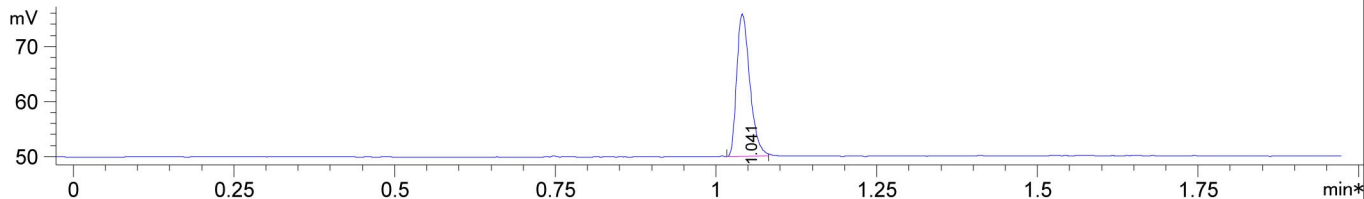
Flow Rate:1.5mL/min

Column: Chromolith Fast Gradien RP-18e,50-3mm.

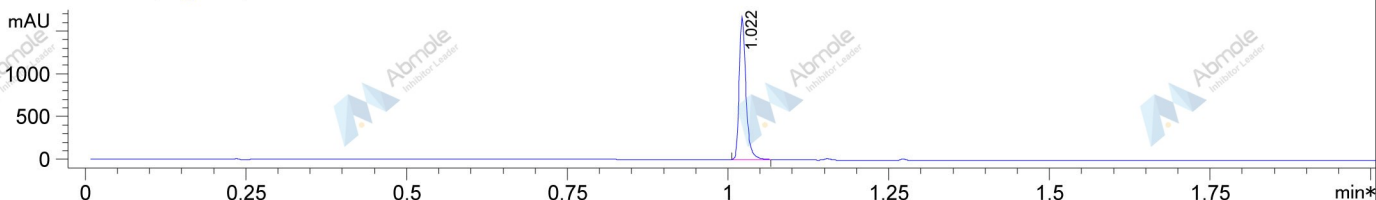
Column Temperature: 40C

Mass Range:100-1100

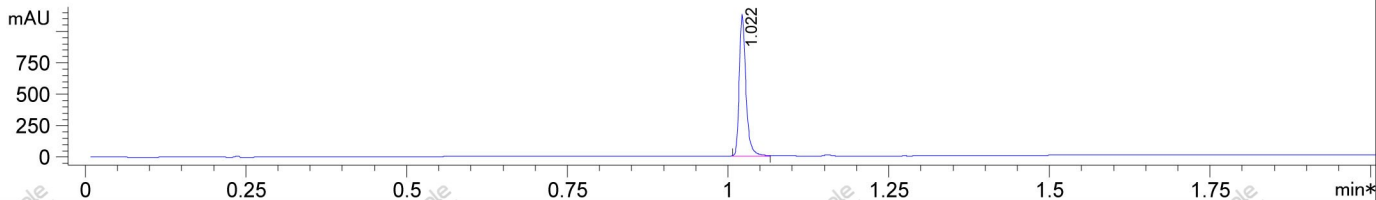
\*ADC1 A, ELSD



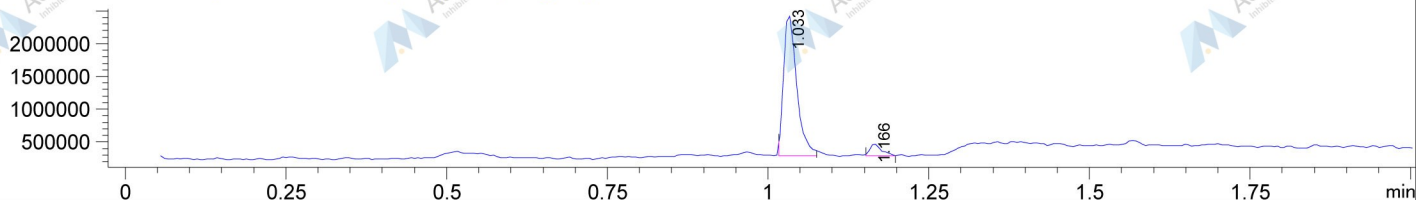
\*DAD1 A, Sig=214,4 Ref=off



\*DAD1 B, Sig=254,4 Ref=off



MSD1 TIC, MS File ES-API, Pos, Scan, Frag: 70,



Integration Results for ADC1 A, ELSD

RetTim	Width	Area	Height	Area%
1.04	0.02	36.63	25.89	100.00

Integration Results for DAD1 A, Sig=214,4 Ref=off

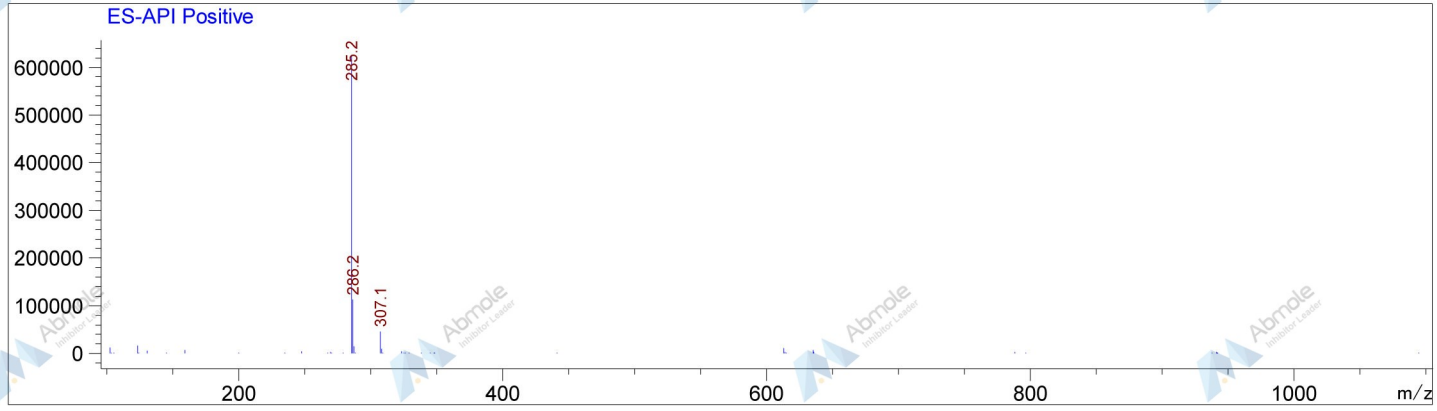
RetTim	Width	Area	Height	Area%
1.02	0.01	1217.11	1677.18	100.00

Integration Results for DAD1 B, Sig=254,4 Ref=off

RetTim	Width	Area	Height	Area%
1.02	0.01	806.19	1127.34	100.00

Ret. Time: 1.03

<<<< POSITIVE SPECTRA >>>>



Ret. Time: 1.17

