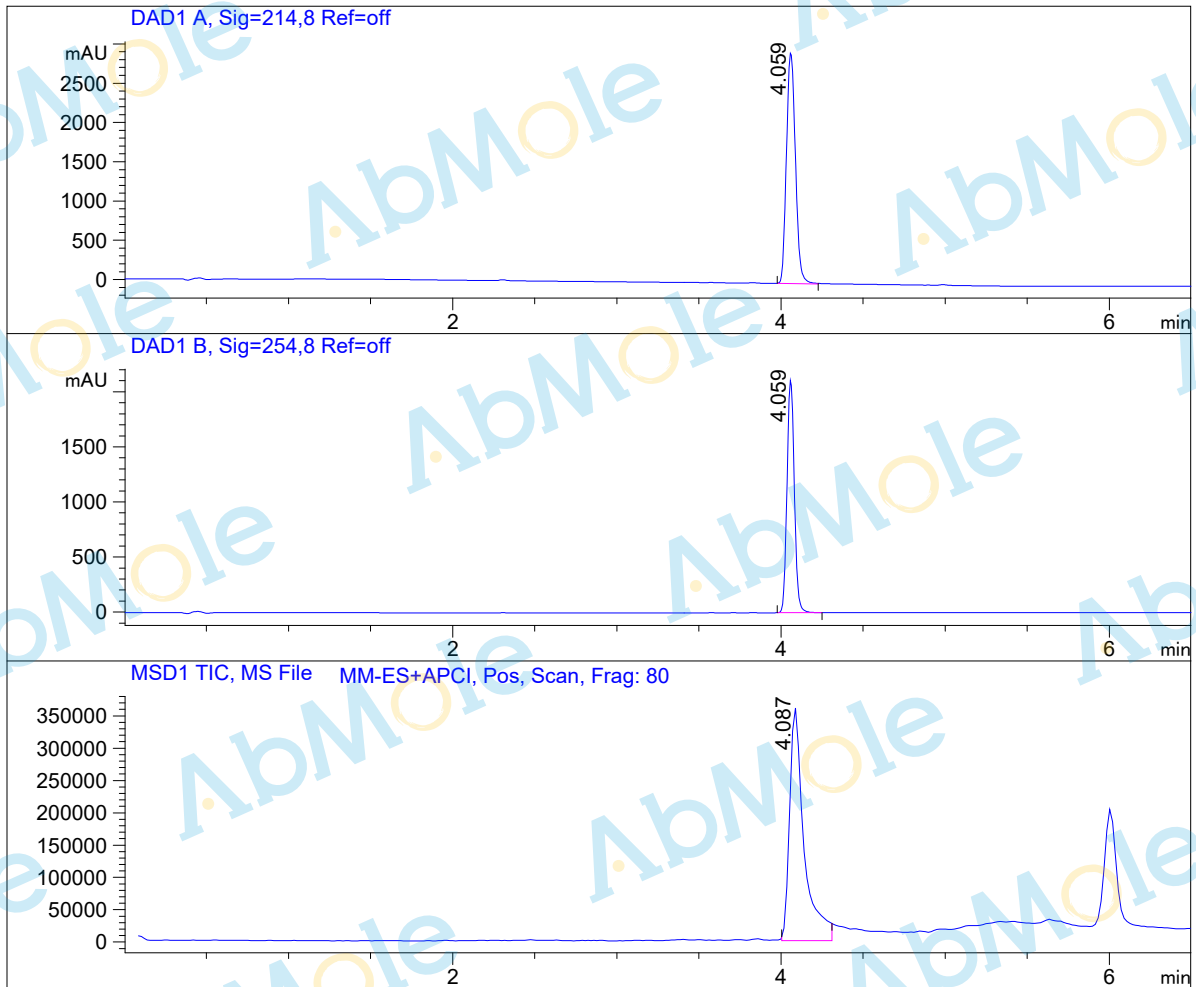


LC-MS Report

Sample Name : NSC 405020-01
Data File : D:\DATA-LCMS-13\2020\01-20\14\4\NSC 405020-01.D
Injection Date : Tue, 14. Jan. 2020 Inj. Vol. : 5ul
Acq Operator : LCMS-13 Location : Vial 54
Acq. Method : D:\data-lcms-13\2020\01-20\14\4\P-05-95.M
Method Info. : column:Xbridge C18 5um 4.6*30mm ;mobile phase:B (ACN)
A(0.02%NH4Ac); gradient(B%)!as Acq.Method above



Integration Results

Signal 1: DAD1 A, Sig=214,8 Ref=off

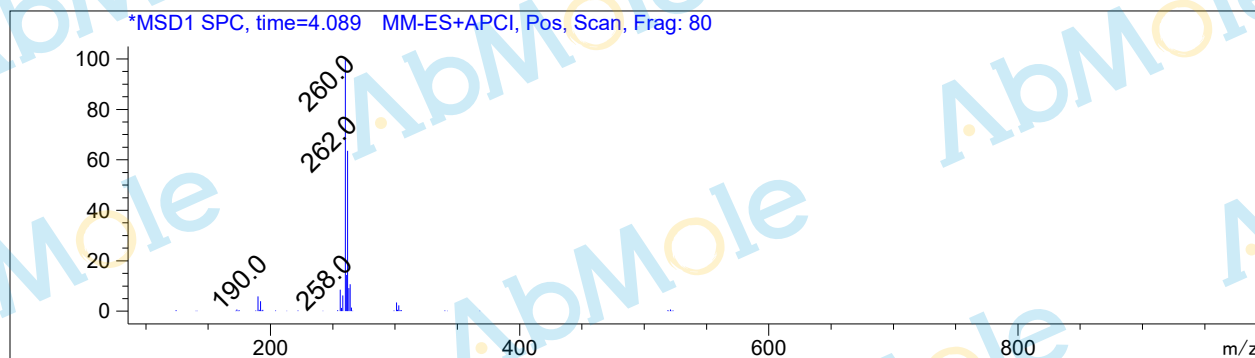
#	R.T.	Type	Height	Height%	Width	Area	Area %
1	4.059	MF	2956.816	100.000	0.063	11205.461	100.000

Signal 2: DAD1 B, Sig=254,8 Ref=off

#	R.T.	Type	Height	Height%	Width	Area	Area %
1	4.059	BB	2116.694	100.000	0.048	6601.442	100.000

Signal 3: MSD1 TIC, MS File

#	R.T.	Type	Height	Height%	Width	Area	Area %
1	4.087	MM	364731.219	100.000	0.101	2.208e+006	100.000



*** End of Report ***